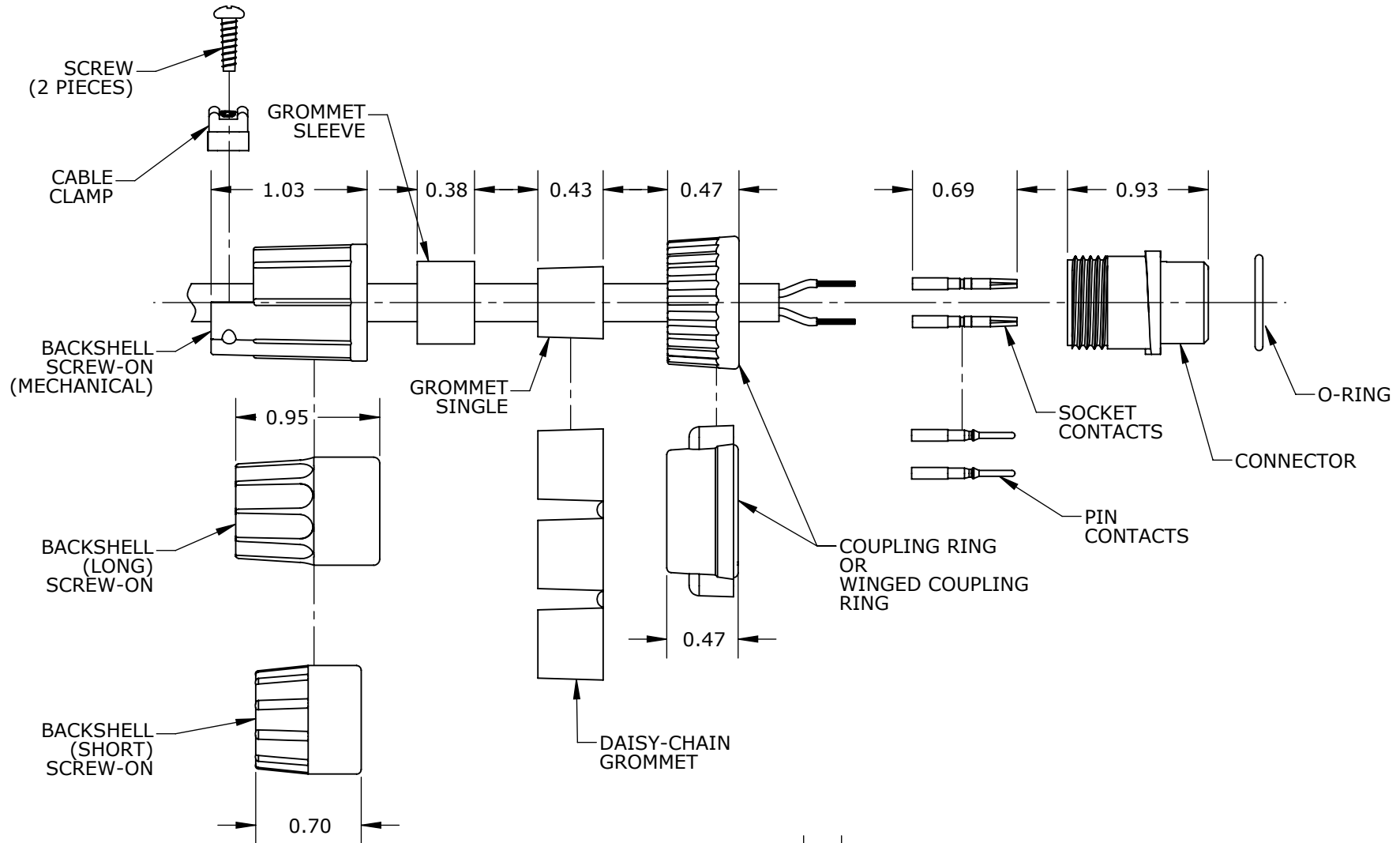


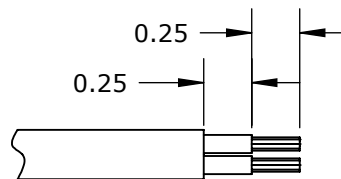
INSTRUCTION SHEET

MULTI-CON-X SERIES

CABLE CONNECTOR ASSEMBLY



NOTES:
1. ALL DIMENSIONS ARE FOR REFERENCE ONLY.



RECOMMENDED STRIPPING LENGTH

A	BZ	04-21-09	DRAWING CREATED PER DOR 09-1367KL
REV.	INIT.	DATE	DESCRIPTION
CHECKED BY:			
APPROVED BY:			
FILE:	LAB-0014	SHEET	1 OF 1

Conxall

601 E. WILDWOOD VILLA PARK, IL 60181