



NEW PRODUCT BULLETIN 679

EAC
PANEL MOUNT
CONNECTORS



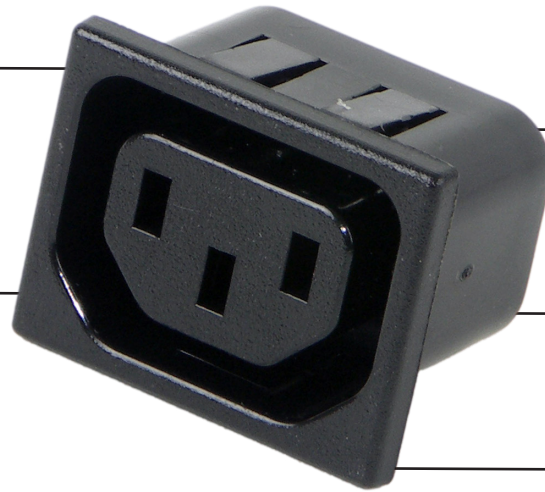
Switchcraft[®]
CONXALL[®]

HARSH ENVIRONMENT CONNECTIVITY SOLUTIONS

5555 N ELSTON AVE | CHICAGO, IL | 773.792.2700 | SALES@SWITCHCRAFT.COM | WWW.SWITCHCRAFT.COM

Receptacles have orbitally riveted lugs or single piece terminals for superior mechanical/electrical connections

Built with 2-3 contacts in male or female versions



UL recognized and CSA approved

Receptacles snap-in or screw mount from the front or rear of panel

feature choice of short, standard or long solder lugs or FASTON® type terminals

POWER INLET PRODUCT LINE

SWITCHCRAFT'S EAC PANEL MOUNTS are two and three contact primary power receptacles which are designed to meet IEC/EN 60320, as well as applicable UL, CSA and VDE specifications, as indicated. Receptacles feature choice of short, standard or long solder lugs or FASTON® type terminals.



VARIETY OF RECEPTACLES

Receptacles feature choice of short, standard or long solder lugs or FASTON® type terminals.



UL, CSA, AND VDE CERTIFIED

UL recognition, CSA approval and VDE certified for high quality safety standards



SWITCHCRAFT® QUALITY

Switchcraft's quality has been trusted in critical applications for over 75 years

SPECIFICATIONS

Voltage Rating:	250V
Dielectric Strength:	1500 V (rms).
Current Rating:	15A (UL, CSA), 10A (VDE)
Arcing Test:	Meets UL 498 Standard.
Insulation Resistance:	2 million megohms @ 500 V DC.
Thermal Range:	-55° C to +65° C (except EAC45x series).
Solderability Standard:	Meets MIL-STD-202, method 208, EIA RS-186-9E.
Salt Spray:	Meets MIL-STD-202, method 101; EIA-RS-186-5E, method 5

PART NUMBERS

PART NO.	GENDER	MOUNTING	TERMINALS	PANEL THICKNESS (IN.)
EAC227	Male	Front or Rear	Solder Lug	N/A
EAC223	Male	Rear	PC Terminal	N/A
EAC233T	Male	Rear w/ Wide Twist Tab	PC Terminal	N/A
EAC301X	Male	N/A	FASTON®	N/A
EAC305	Female	Front	Solder Lug	N/A
EAC309X	Male	Front or Rear	Solder Lug	N/A
EAC311X	Male	Front or Rear	FASTON®	N/A
EAC325	Female	Rear	Solder Lug (Short)	N/A
EAC327X	Male	Front or Rear	Solder Lug	N/A
EAC333	Male	Rear	PC Terminal	N/A
EAC333S	Male	Rear	PC Terminal	N/A
EAC333T	Male	Rear w/ Wide Twist Tab	PC Terminal	N/A
EAC405030	Female	Front	Solder Lug	0.030"
EAC405040	Female	Front	Solder Lug	0.040"
EAC405050	Female	Front	Solder Lug	0.050"
EAC405060	Female	Front	Solder Lug	0.060"
EAC409030	Male	Front	Solder Lug	0.030"
EAC409040	Male	Front	Solder Lug	0.040"
EAC409050	Male	Front	Solder Lug	0.050"
EAC409060	Male	Front	Solder Lug	0.060"
EAC411030	Male	Front	Solder Lug	0.030"
EAC411040	Male	Front	Solder Lug	0.040"
EAC411050	Male	Front	Solder Lug	0.050"