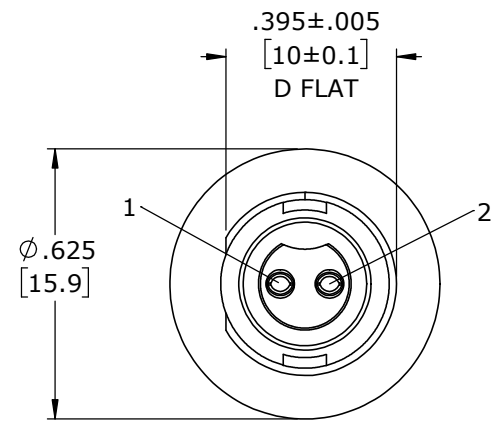


PART NO.	NO. OF CONTACTS
W17292-2SG-3ES	2
W17292-3SG-3ES	3

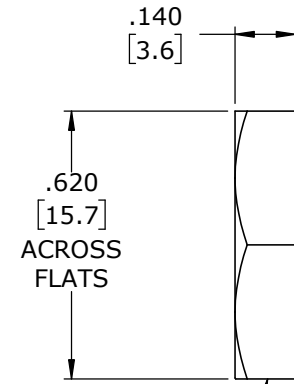
NOTES:

- PANEL CONNECTORS TO BE PACKED IN PARTITION BOX, 200 PC PER BOX
HEX NUT AND GASKET TO BE BULK PACKED IN A SEPARATE BAG FROM
PANEL ASSEMBLY PACKAGE.
a) INNER BOX LABEL WITH CXA PART NUMBER, QUANTITY, LOT #
AND DATE CODE ON LABEL AS SHOWN AND PLACED ON THE TOP BOX
- CONTACTS ARE INSERTED INTO PANEL CONNECTOR.
- BACK END OF CONNECTOR FILLED WITH BLACK EPOXY
- ALL DIMENSIONS ARE REFERENCE EXCEPT THOSE WITH A TOLERANCE
- SEE DRAWING HPMCSTD FOR HOLE PATTERN.

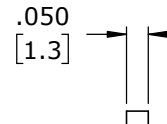
P/N: W17292-XSG-3ES
CONXALL
QTY:
Lot
Date Code:



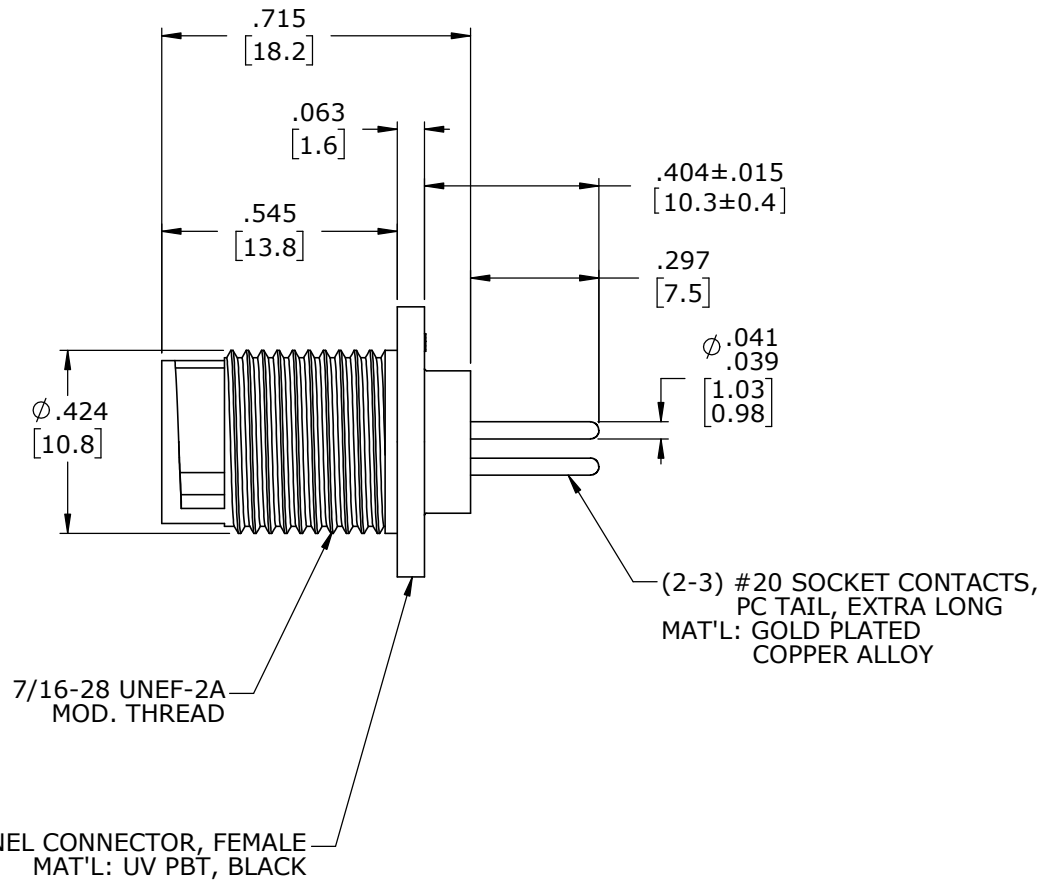
FACE VIEW
W17292-2SG-3ES



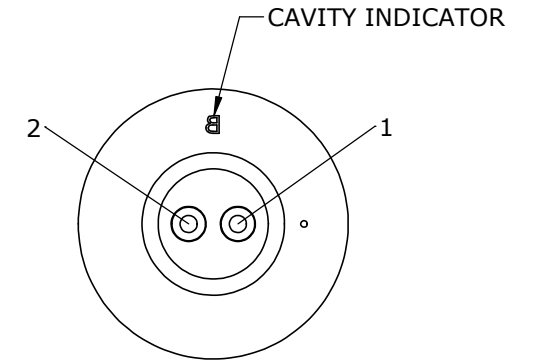
HEX NUT
MAT'L: UV PBT, BLACK



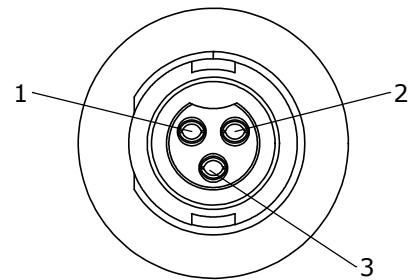
GASKET
MAT'L: RUBBER, BLACK



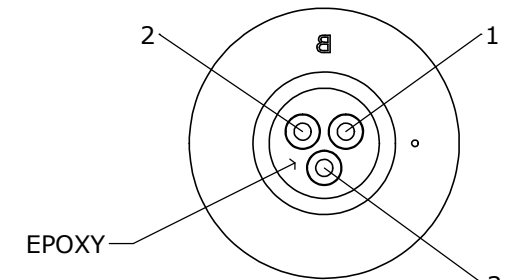
PANEL CONNECTOR, FEMALE
MAT'L: UV PBT, BLACK



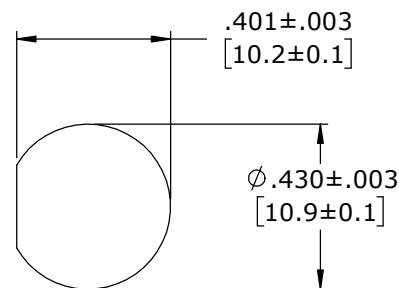
WIRE VIEW
W17292-2SG-3ES



FACE VIEW
W17292-3SG-3ES



WIRE VIEW
W17292-3SG-3ES



**RECOMMENDED
PANEL CUT-OUT**

DIMENSIONS IN BRACKETS [] ARE METRIC.

CUSTOMER APPROVAL

THIS DOCUMENT CONTAINS CONFIDENTIAL INFORMATION PROPRIETARY TO CONXALL CORPORATION. ANY REPRODUCTION, DISCLOSURE, OR USE OF THIS DOCUMENT /INFORMATION IS EXPRESSLY PROHIBITED UNLESS AUTHORIZED IN WRITING BY CONXALL CORPORATION.

APPROVED BY: _____
DATE: _____

RoHS COMPLIANT

A	MA	10-04-23	DRAWING CREATED PER DOR 16-E256SL-59
REV.	INIT.	DATE	DESCRIPTION
	MA	10-04-23	ORIG. DRAWN BY: DATE: MA 10-04-23
ALL INFORMATION ILLUSTRATED IS THE PROPERTY OF CONXALL CORPORATION. UNAUTHORIZED DUPLICATION OR DISTRIBUTION OF THIS DOCUMENT IS PROHIBITED.			<p>601 E. WILDWOOD VILLA PARK, IL 60181</p>
ALL UNITS ARE IN FEET, INCHES, FRACTION OF INCHES AND DECIMALS. UNLESS OTHERWISE SPECIFIED TOLERANCES: 3 PLACE DECIMALS ±0.10 ANGLES ±1° FRACTIONS ±1/16 - CRITICAL CHARACTERISTIC FLAG PER SPEC. XXXX			
APPROVED BY: _____			TITLE: PANEL MOUNT ASSEMBLY (2-3) #20 SOCKET CONTACTS, .345 PC TAIL MICRO-CON-X
SCALE	SIZE	SHEET	CUSTOMER: STANDARD PRODUCT
NTS	B	1 OF 1	
FILE: W17292-XSG-3ES	DIRECTORY: SLW	PART NUMBER: W17292-XSG-3ES	REV A

CUSTOMER PRINT

PART NUMBER: W17292-XSG-3ES