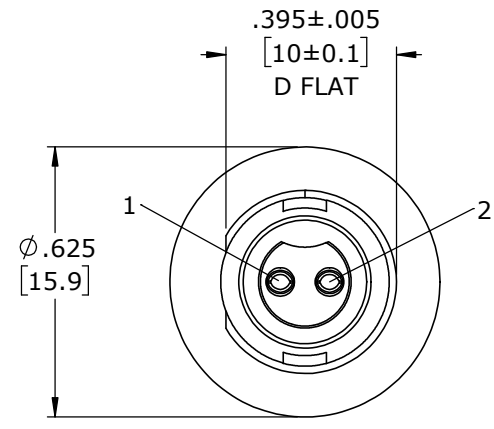


PART NO.	NO. OF CONTACTS
W17292-2SG-300	2
W17292-3SG-300	3

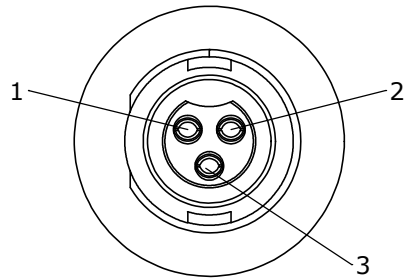
NOTES:

- PANEL CONNECTORS TO BE PACKED IN PARTITION BOX, 200 PC PER BOX
HEX NUT AND GASKET TO BE BULK PACKED IN A SEPARATE BAG FROM
PANEL ASSEMBLY PACKAGE.
a) INNER BOX LABEL WITH CXA PART NUMBER, QUANTITY, LOT #
AND DATE CODE ON LABEL AS SHOWN AND PLACED ON THE TOP BOX
- CONTACTS ARE INSERTED INTO PANEL CONNECTOR.
- ALL DIMENSIONS ARE REFERENCE EXCEPT THOSE WITH A TOLERANCE
- SEE DRAWING HPMCSTD FOR HOLE PATTERN.

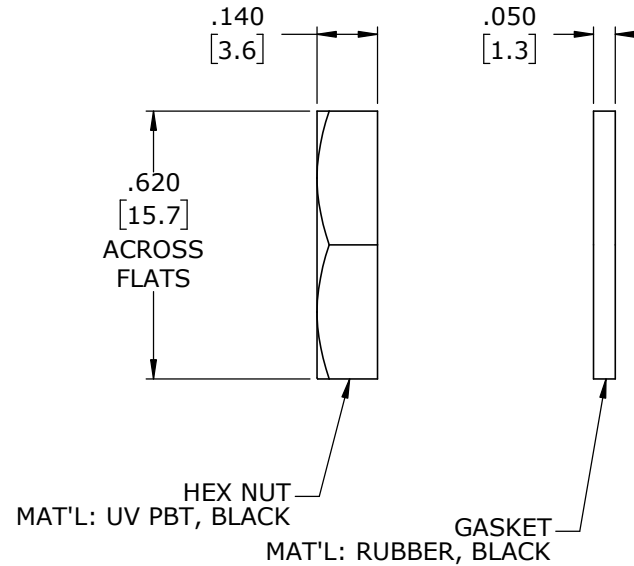
P/N: W17292-XSG-300
CONXALL
QTY:
Lot
Date Code:



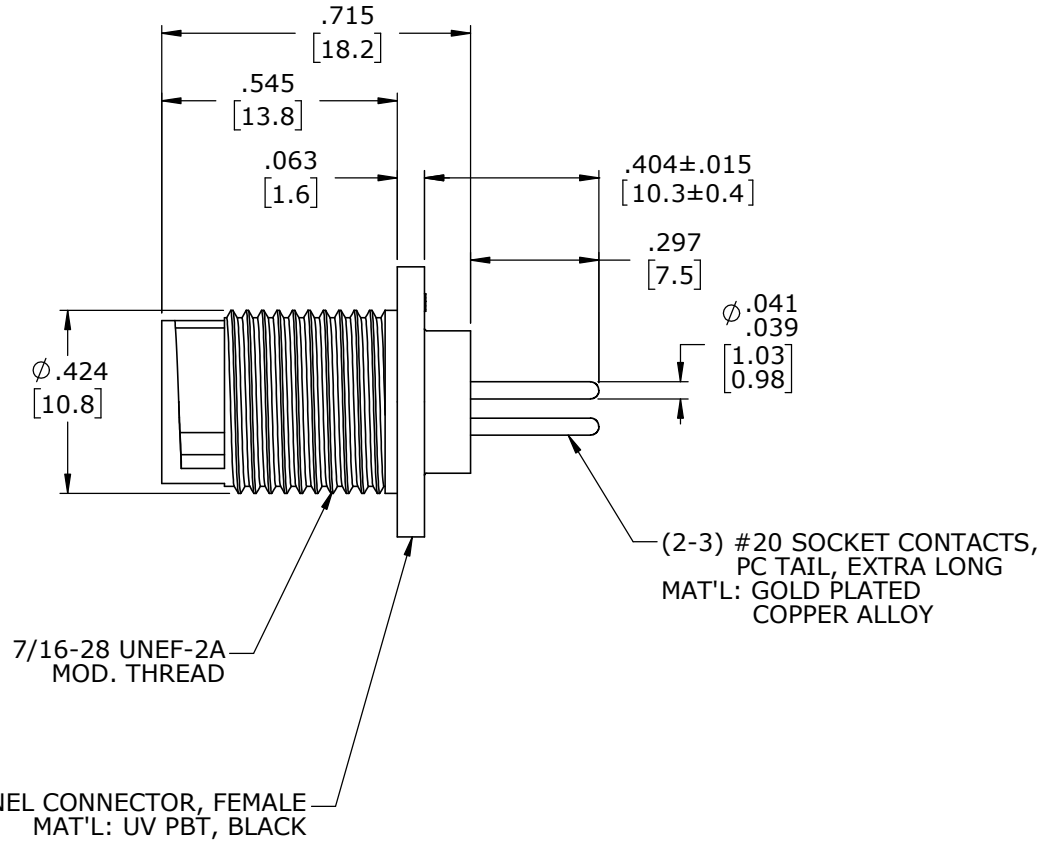
FACE VIEW
W17292-2SG-300



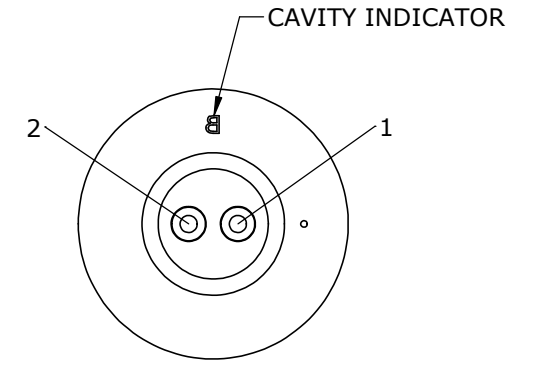
FACE VIEW
W17292-3SG-300



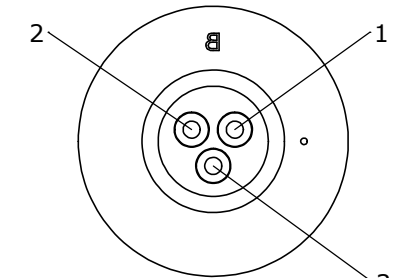
HEX NUT
MAT'L: UV PBT, BLACK
GASKET
MAT'L: RUBBER, BLACK



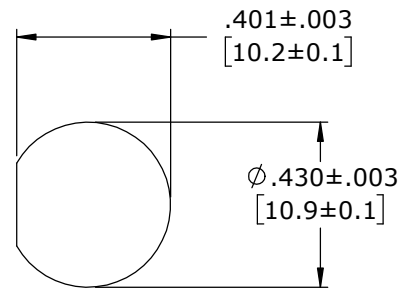
7/16-28 UNEF-2A
MOD. THREAD
PANEL CONNECTOR, FEMALE
MAT'L: UV PBT, BLACK
(2-3) #20 SOCKET CONTACTS,
PC TAIL, EXTRA LONG
MAT'L: GOLD PLATED
COPPER ALLOY



WIRE VIEW
W17292-2SG-300



WIRE VIEW
W17292-3SG-300



**RECOMMENDED
PANEL CUT-OUT**

DIMENSIONS IN BRACKETS [] ARE METRIC.

CUSTOMER APPROVAL

THIS DOCUMENT CONTAINS CONFIDENTIAL INFORMATION PROPRIETARY TO CONXALL CORPORATION. ANY REPRODUCTION, DISCLOSURE, OR USE OF THIS DOCUMENT /INFORMATION IS EXPRESSLY PROHIBITED UNLESS AUTHORIZED IN WRITING BY CONXALL CORPORATION.

APPROVED BY: _____
DATE: _____

RoHS COMPLIANT

A	MA	10-04-23	DRAWING CREATED PER DOR 16-E256SL-59
REV.	INIT.	DATE	DESCRIPTION
	MA	10-04-23	ORIG. DRAWN BY: DATE: CHECKED BY:
APPROVED BY:			 601 E. WILDWOOD VILLA PARK, IL 60181
SCALE	SIZE	SHEET	
NTS	B	1 OF 1	TITLE: PANEL MOUNT ASSEMBLY (2-3) #20 SOCKET CONTACTS, .345 PC TAIL MICRO-CON-X CUSTOMER: STANDARD PRODUCT
FILE:	DIRECTORY:	PART NUMBER:	REV
W17292-XSG-300	SLW	W17292-XSG-300	A

CUSTOMER PRINT

PART NUMBER: W17292-XSG-300