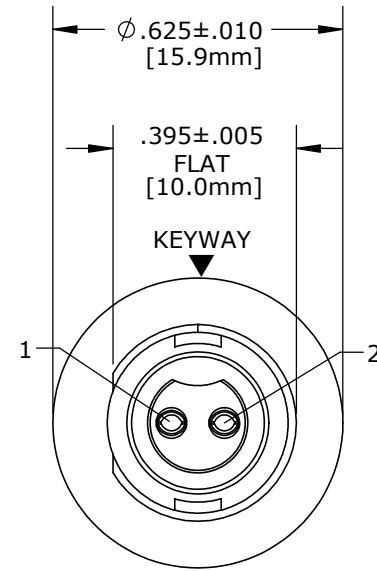


PART NO.	NO. OF CONTACTS
17292-2SG-300	2
17292-3SG-300	3

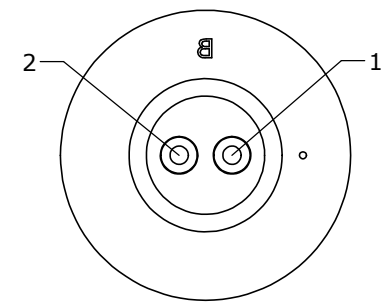
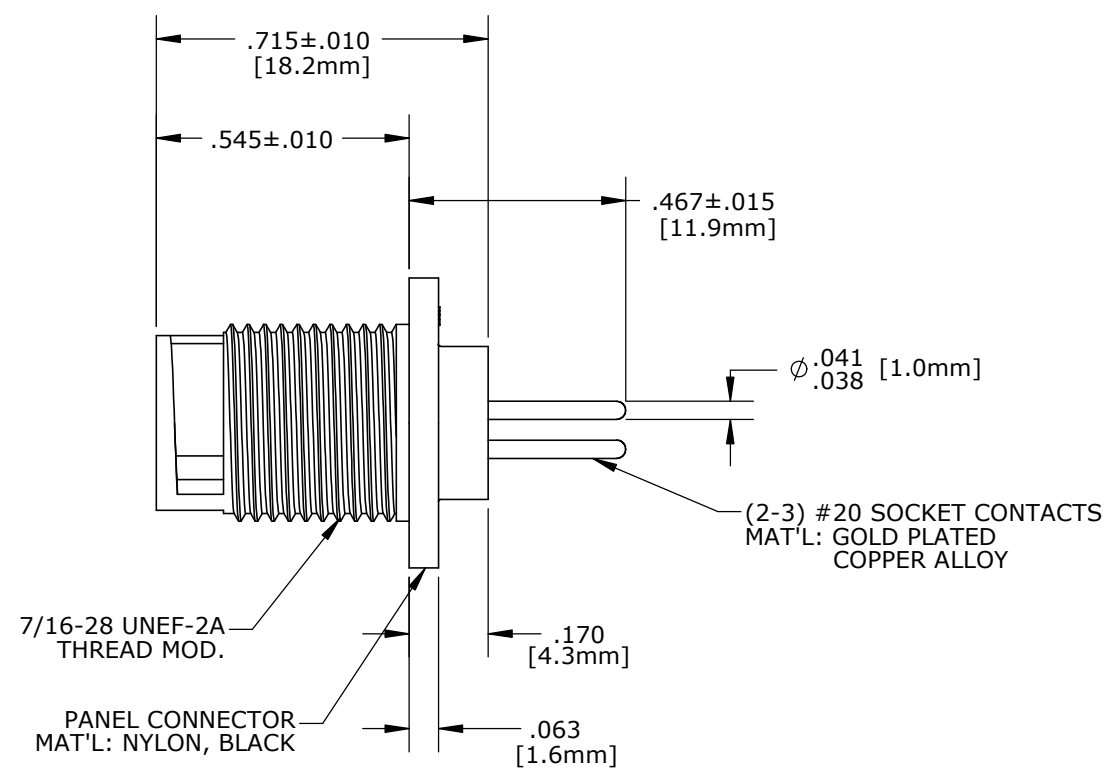
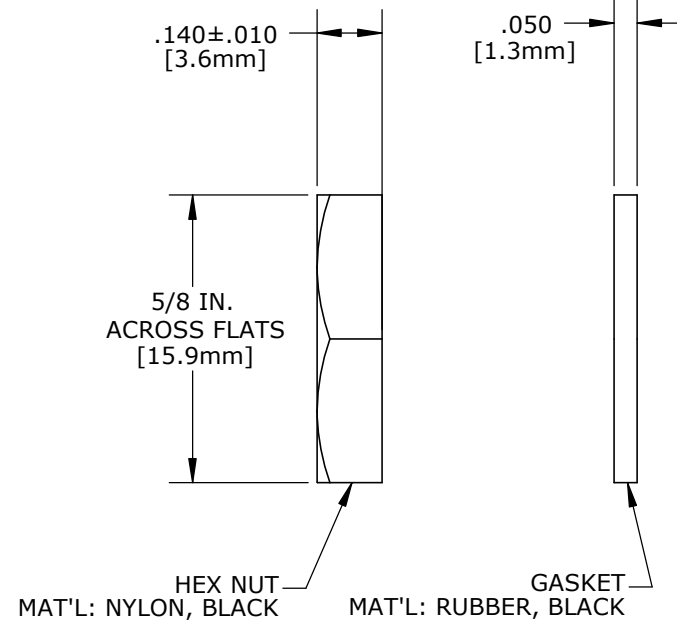
NOTES:

- PANEL CONNECTORS TO BE PACKED IN PARTITION BOX, 200 PC PER BOX
HEX NUT AND GASKET TO BE BULK
PACKED IN A SEPARATE BAG FROM PANEL ASSEMBLY PACKAGE.
- CONTACTS ARE INSERTED INTO PANEL CONNECTOR.
- ALL DIMENSIONS ARE REFERENCE EXCEPT THOSE WITH A TOLERANCE
- SEE DRAWING HPMCSTD FOR HOLE PATTERN.

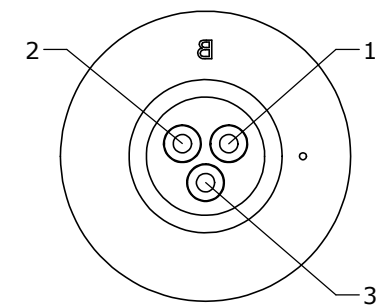
CUSTOMER PRINT



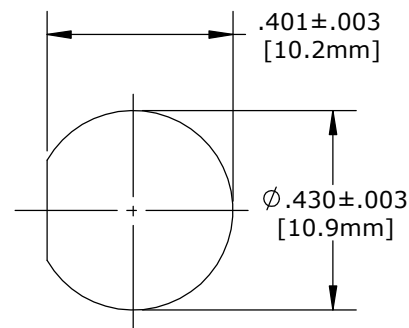
FACE VIEW
17292-2SG-300



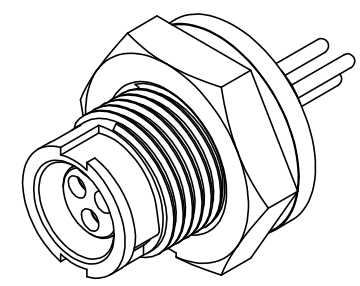
WIRE VIEW
17292-2SG-300



WIRE VIEW
17292-3SG-300



**RECOMMENDED
PANEL CUT-OUT**



DIMENSIONS IN BRACKET [] ARE METRIC.


CUSTOMER APPROVAL

THIS DOCUMENT CONTAINS CONFIDENTIAL INFORMATION PROPRIETARY TO CONXALL CORPORATION. ANY REPRODUCTION, DISCLOSURE, OR USE OF THIS DOCUMENT / INFORMATION IS EXPRESSLY PROHIBITED UNLESS AUTHORIZED IN WRITING BY CONXALL CORPORATION.

APPROVED BY: _____

DATE: _____

RoHS COMPLIANT

B	AN	09-15-20	CREATED SLW DRAWING PER DOR 15-E253SL #30 SUPERSEDED 17292-XSG-3XX
A	RCS	11-06-01	DRAWING CREATED PER DOR #01-5053KN
REV.	INIT.	DATE	DESCRIPTION
<small>ALL INFORMATION ILLUSTRATED IS THE PROPERTY OF CONXALL CORPORATION. UNAUTHORIZED DUPLICATION OR DISTRIBUTION OF THIS DOCUMENT IS PROHIBITED.</small>			<small>ORIG. DRAWN BY: DATE: RCS 08-23-01</small>  <small>601 E. WILDWOOD VILLA PARK, IL 60181</small>
<small>ALL UNITS ARE IN FEET, INCHES, FRACTION OF INCHES AND DECIMALS.</small>			TITLE: PANEL MOUNT ASSEMBLY (2-3) #20 SOCKET CONTACTS, .345 PC TAIL MICRO-CON-X CUSTOMER: STANDARD PRODUCT
<small>UNLESS OTHERWISE SPECIFIED TOLERANCES: 3 PLACE DECIMALS ±.010 ANGLES ±1° FRACTIONS ±1/16 = CRITICAL CHARACTERISTIC FLAG PER SPEC. XXXX</small>			
SCALE	SIZE	SHEET	FILE
NTS	B	1 OF 1	17292-XSG-300
FILE:	DIRECTORY:	PART NUMBER:	REV
17292-XSG-300	SLW	17292-XSG-300	B

PART NUMBER: 17292-XSG-300