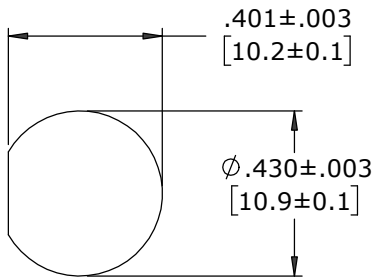
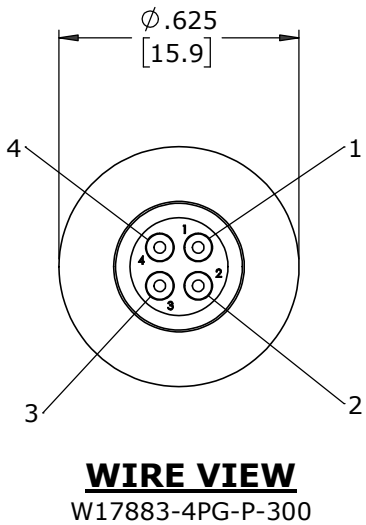
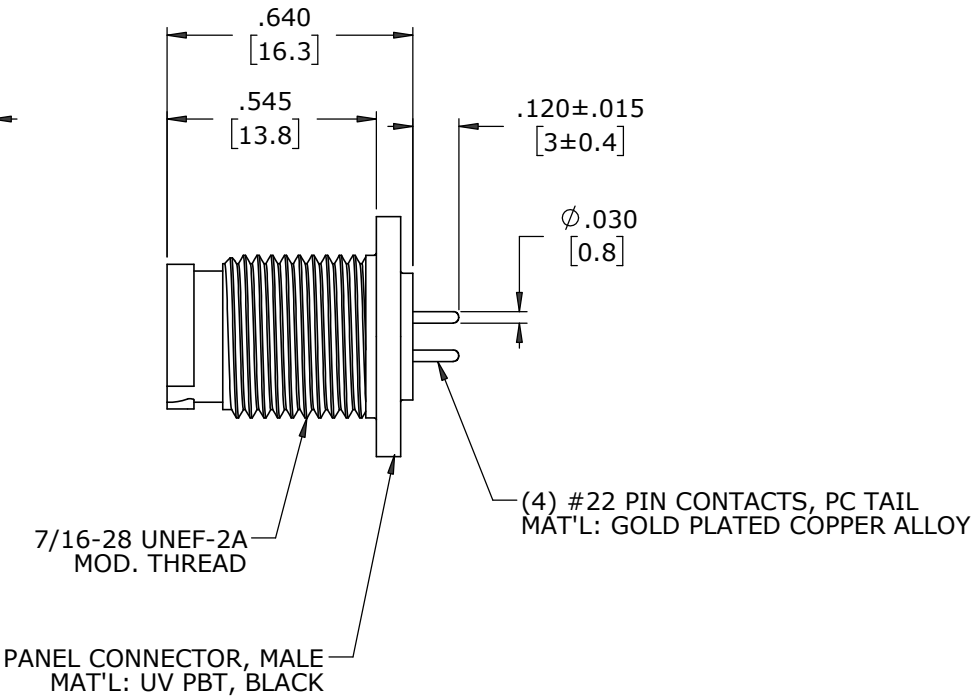
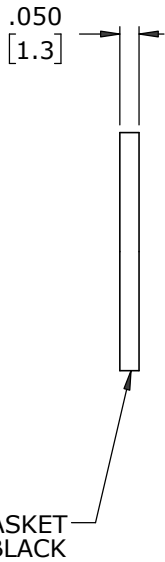
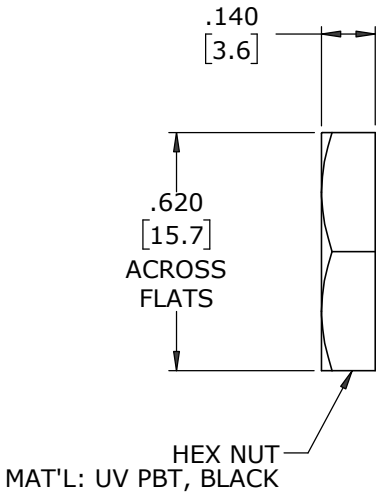
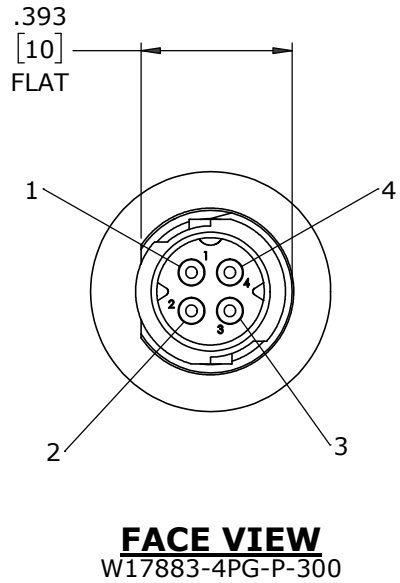



- NOTES:
- 1. CONNECTORS TO BE PACKED IN PARTITION BOX, 200 PC PER BOX. HEX NUT AND GASKET TO BE BULK PACKED IN A SEPARATE BAG FROM ASSEMBLY PACKAGE.
    - a) INNER BOX LABELED WITH CXA PART NUMBER, QUANTITY, LOT # AND DATE CODE AS SHOWN
  - 2. CONTACTS INSERTED INTO HOUSING AS SHOWN.
  - 3. SEE DRAWING HPMCSTD FOR HOLE PATTERN.
  - 4. ALL DIMENSIONS ARE REFERENCE EXCEPT THOSE WITH A TOLERANCE

P/N: W17883-4PG-P-300  
CONXALL  
QTY:  
Lot:  
Date Code:



CUSTOMER APPROVAL	
THIS DOCUMENT CONTAINS CONFIDENTIAL INFORMATION PROPRIETARY TO CONXALL CORPORATION. ANY REPRODUCTION, DISCLOSURE, OR USE OF THIS DOCUMENT /INFORMATION IS EXPRESSLY PROHIBITED UNLESS AUTHORIZED IN WRITING BY CONXALL CORPORATION.	
APPROVED BY:	_____
DATE:	_____

A	MA	08-06-20	RELEASED PER PDR 18004-2	
	JGK	8/13/19	DRAWING CREATED PFOR PDR #18004	
REV.	INIT.	DATE	DESCRIPTION	
	JGK	8/13/19	ORIG. DRAWN BY: JGK	 601 E. WILDWOOD VILLA PARK, IL 60181
			CHECKED BY:	
			APPROVED BY:	
			SCALE: NTS	
			SIZE: B	TITLE: PANEL MOUNT ASSEMBLY (4) #22 PIN CONTACTS, PC TAIL INSTA-CLICK™ MICRO-CON-X STANDARD PRODUCT
			SHEET: 1 OF 1	
			FILE: W17883-4PG-P-300	CUSTOMER: PART NUMBER: W17883-4PG-P-300
			DIRECTORY: SLW	
				REV A

DIMENSIONS IN BRACKETS [ ] ARE IN MILLIMETERS UNLESS INDICATED

RoHS COMPLIANT

➤ = CRITICAL CHARACTERISTIC FLAG PER SPEC. XXXX