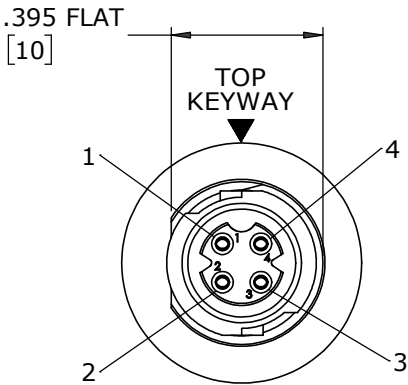
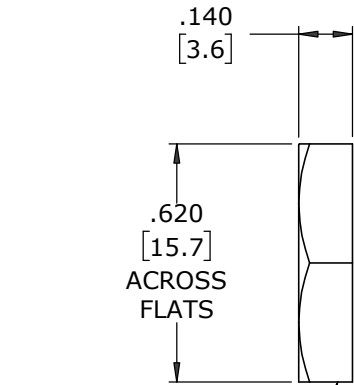


NOTES:

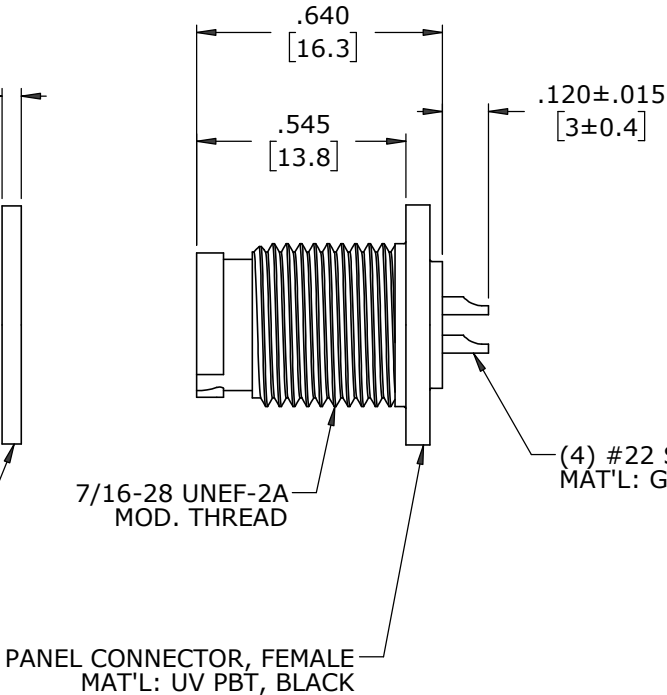
- 1. ALL PARTS ARE BULK PACKED
- 2. CONTACTS ARE ASSEMBLED INTO CONNECTOR WITH SOLDER CUPS FACING TOP KEYWAY
- 3. REAR OF CONNECTOR FILLED WITH EPOXY
- 4. ALL DIMENSIONS ARE REFERENCE EXCEPT THOSE WITH A TOLERANCE



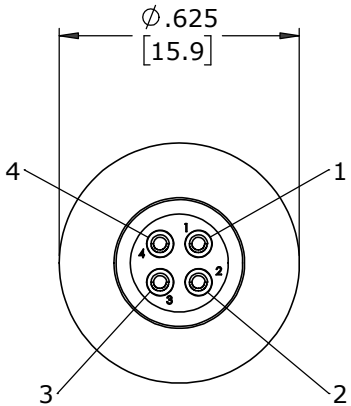
FACE VIEW  
W17882-4SG-P-300



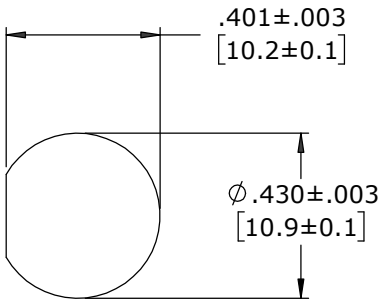
HEX NUT  
MAT'L: UV PBT, BLACK  
GASKET  
MAT'L: NEOPRENE, BLACK



7/16-28 UNEF-2A MOD. THREAD  
(4) #22 SOCKET CONTACTS, SOLDER MAT'L: GOLD PLATED COPPER ALLOY



WIRE VIEW  
W17882-4SG-P-300



RECOMMENDED  
PANEL CUT-OUT

CUSTOMER APPROVAL

THIS DOCUMENT CONTAINS CONFIDENTIAL INFORMATION PROPRIETARY TO CONXALL CORPORATION. ANY REPRODUCTION, DISCLOSURE, OR USE OF THIS DOCUMENT /INFORMATION IS EXPRESSLY PROHIBITED UNLESS AUTHORIZED IN WRITING BY CONXALL CORPORATION.

APPROVED BY: \_\_\_\_\_  
DATE: \_\_\_\_\_

A		MA		08-06-20		DRAWING CREATED FOR PDR #18004-2									
REV.		INIT.		DATE		DESCRIPTION									
<div>ALL INFORMATION ILLUSTRATED IS THE PROPERTY OF "CONXALL CORPORATION." UNAUTHORIZED DUPLICATION OR DISTRIBUTION OF THIS DOCUMENT IS PROHIBITED.</div> <div>ALL UNITS ARE IN FEET, INCHES, FRACTION OF INCHES AND DECIMALS.</div>						ORIG. DRAWN BY:		DATE:		<div>CONXall</div> <div>601 E. WILDWOOD VILLA PARK, IL 60181</div>					
						MA		08-06-20							
<div>▷ = CRITICAL CHARACTERISTIC FLAG PER SPEC. XXXX</div>						CHECKED BY:		<div>TITLE:</div> <div>PANEL MOUNT ASSEMBLY (4) #22 SOCKET CONTACTS, SOLDER INSTA-CLICK™ MICRO-CON-X STANDARD PRODUCT</div> <div>CUSTOMER:</div>							
						APPROVED BY:									
						SCALE								SIZE	
NTS		B		1 OF 1											
FILE:		W17882-4SG-P-3ES				DIRECTORY:		PART NUMBER:		W17882-4SG-P-3ES					
						SLW						REV A			

DIMENSIONS IN BRACKETS [ ] ARE IN MILLIMETERS UNLESS INDICATED

RoHS COMPLIANT

➤ = CRITICAL CHARACTERISTIC  
FLAG PER SPEC. XXXX