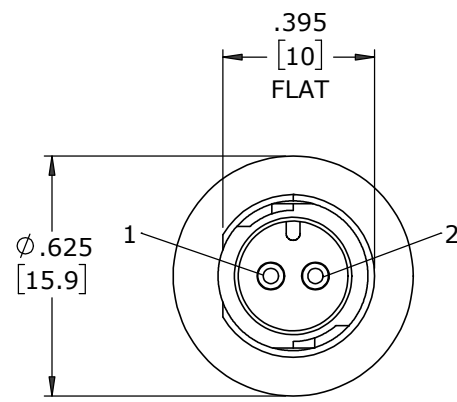


ASS'Y P/N	NO. OF CONTACTS
W17291-2PG-P-300	2 #20
W17291-3PG-P-300	3 #20

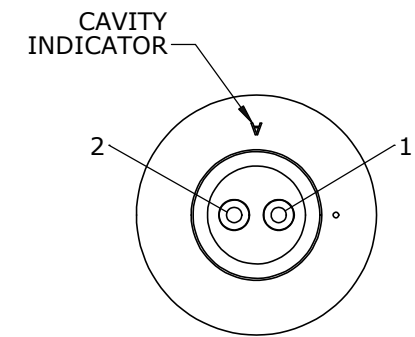
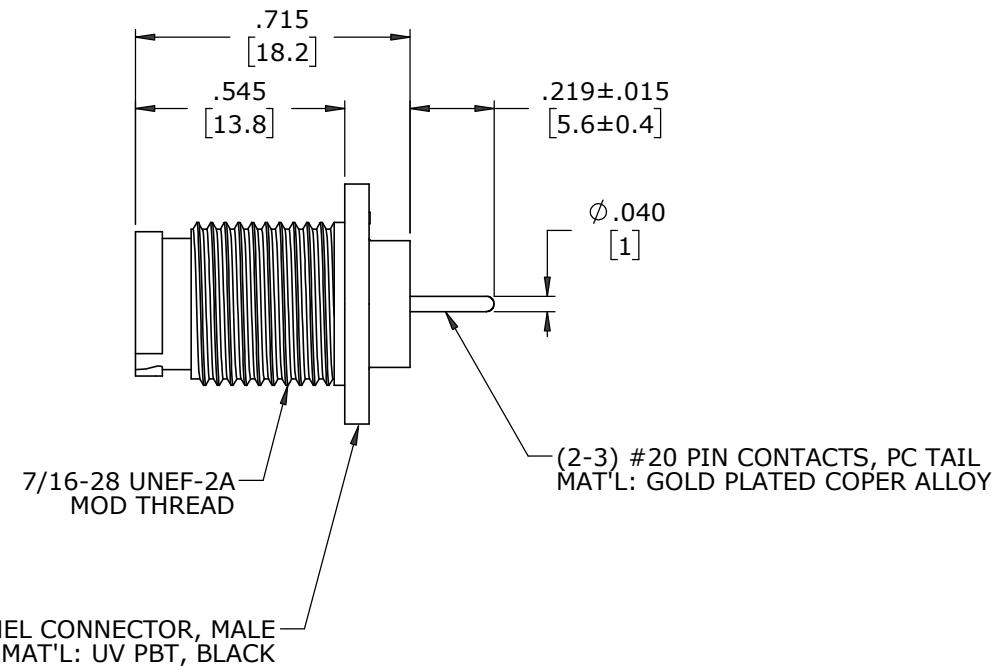
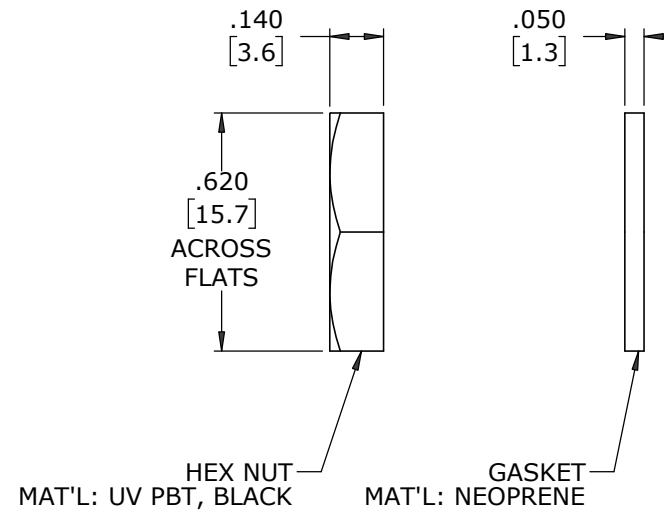
NOTES:

- PANEL CONNECTORS TO BE PACKED IN PARTITION BOX, 200 PC PER BOX
HEX NUT AND GASKET TO BE BULK PACKED IN A SEPARATE BAG
FROM PANEL ASSEMBLY PACKAGE.
a) INNER BOX LABELED WITH CXA PART NUMBER, QUANTITY, LOT # AND
DATE CODE AS SHOWN
- CONTACTS ARE INSERTED INTO PANEL CONNECTOR.
- SEE DRAWING HPMCSTD FOR HOLE PATTERN
- ALL DIMENSIONS ARE FOR REFERENCE ONLY UNLESS OTHERWISE SPECIFIED.

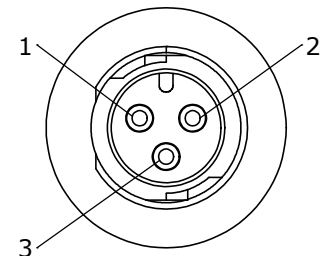
P/N: W17291-XPG-P-300
CONXALL
QTY:
Lot:
Date Code:



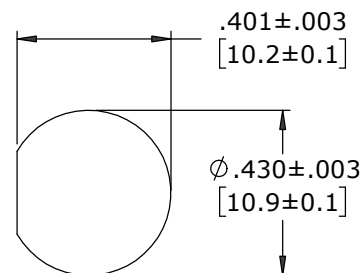
FACE VIEW
W17291-2PG-P-300



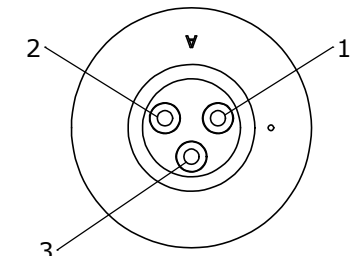
WIRE VIEW
W17291-2PG-P-300



FACE VIEW
W17291-3PG-P-300



**RECOMMENDED
PANEL CUT-OUT**



WIRE VIEW
W17291-3PG-P-300

CUSTOMER PRINT

PART NUMBER: W17291-XPG-P-300

CUSTOMER APPROVAL

THIS DOCUMENT CONTAINS CONFIDENTIAL INFORMATION PROPRIETARY TO CONXALL CORPORATION. ANY REPRODUCTION, DISCLOSURE, OR USE OF THIS DOCUMENT /INFORMATION IS EXPRESSLY PROHIBITED UNLESS AUTHORIZED IN WRITING BY CONXALL CORPORATION.

APPROVED BY: _____
DATE: _____

A	MA	08-13-20	DRAWING CREATED PER PDR 18004-2
REV.	INIT.	DATE	DESCRIPTION
	MA	08-13-20	ORIG. DRAWN BY: DATE: 08-13-20
ALL INFORMATION ILLUSTRATED IS THE PROPERTY OF "CONXALL CORPORATION". UNAUTHORIZED DUPLICATION OR DISTRIBUTION OF THIS DOCUMENT IS PROHIBITED.			<p>601 E. WILDWOOD VILLA PARK, IL 60181</p>
ALL UNITS ARE IN FEET, INCHES, FRACTION OF INCHES AND DECIMALS.			
APPROVED BY:		TITLE:	PANEL ASSEMBLY
SCALE: NTS		SIZE: B	(2-3) #20 PIN CONTACTS, PC TAIL
SHEET: 1 OF 1		DIRECTORY: SLW	INSTA-CLICK™ MICRO-CON-X
FILE: W17291-XPG-P-300		PART NUMBER: W17291-XPG-P-300	STANDARD PRODUCT
- CRITICAL CHARACTERISTIC FLAG PER SPEC. XXXX			REV A

DIMENSIONS IN BRACKETS [] ARE IN MILLIMETERS UNLESS INDICATED

RoHS COMPLIANT