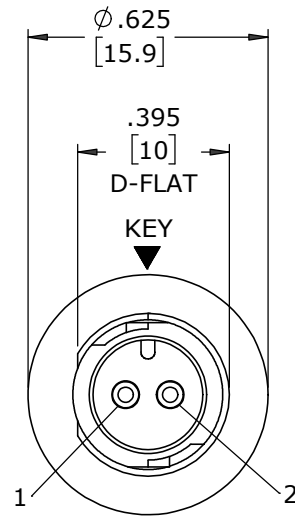


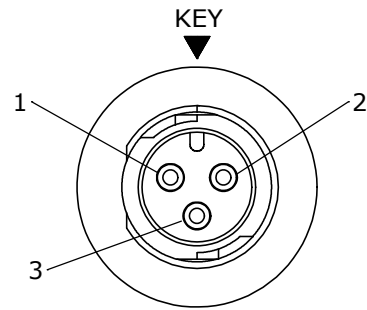
ASS'Y P/N	CONTACT QTY
W17282-2PG-P-3ES	2 #20
W17282-3PG-P-3ES	3 #20

NOTES:

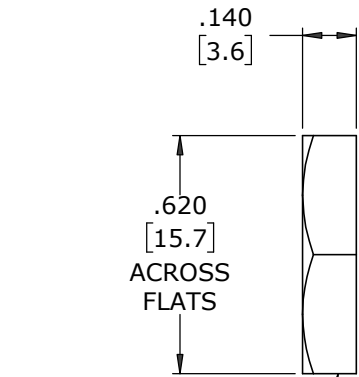
1. PARTS TO BE BULK PACKED
2. CONTACTS INSERTED INTO HOUSING AS SHOWN.
3. BACK END OF CONNECTOR FILLED WITH EPOXY
4. ALL DIMENSIONS ARE REFERENCE EXCEPT THOSE WITH A TOLERANCE



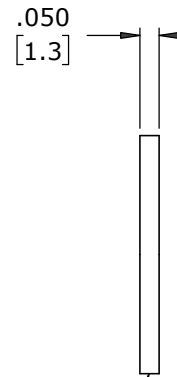
FACE VIEW
W17282-2PG-P-3ES



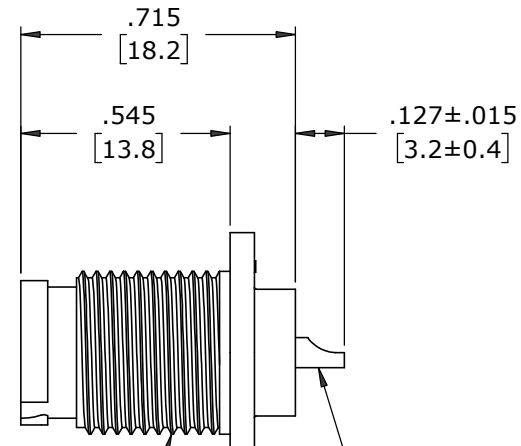
FACE VIEW
W17282-3PG-P-3ES



HEX NUT
MAT'L: UV PBT, BLACK



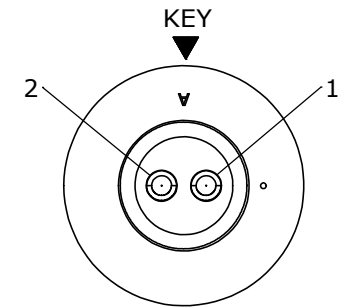
GASKET
MAT'L: NEOPRENE, BLACK



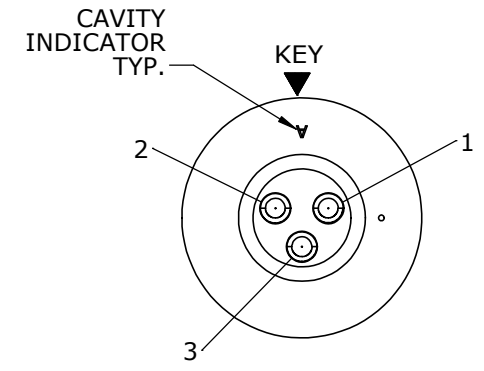
7/16-28 UNEF-2A
MOD. THREAD

PANEL CONNECTOR, MALE
MAT'L: UV PBT, BLACK

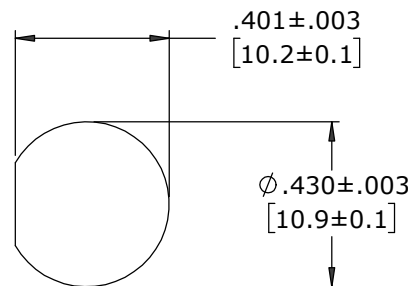
(2-3) #20 PIN CONTACTS, SOLDER
MAT'L: GOLD PLATED COPPER ALLOY



WIRE VIEW
W17282-2PG-P-3ES



WIRE VIEW
W17282-3PG-P-3ES




**RECOMMENDED
PANEL CUT-OUT**

CUSTOMER APPROVAL

THIS DOCUMENT CONTAINS CONFIDENTIAL INFORMATION PROPRIETARY TO CONXALL CORPORATION. ANY REPRODUCTION, DISCLOSURE, OR USE OF THIS DOCUMENT /INFORMATION IS EXPRESSLY PROHIBITED UNLESS AUTHORIZED IN WRITING BY CONXALL CORPORATION.

APPROVED BY: _____
DATE: _____

A	MA	08-06-20	DRAWING CREATED PER PDR 18004-2	
REV.	INIT.	DATE	DESCRIPTION	
	MA	08-06-20	ORIG. DRAWN BY: _____ DATE: 08-06-20 CHECKED BY: _____  601 E. WILDWOOD VILLA PARK, IL 60181	
APPROVED BY: _____			TITLE: PANEL ASSEMBLY (2-3) #20 PIN CONTACTS, SOLDER INSTA-CLICK™ MICRO-CON-X STANDARD PRODUCT	
SCALE	SIZE	SHEET	CUSTOMER: _____	
NTS	B	1 OF 1		
FILE:	DIRECTORY:	PART NUMBER:	REV	
W17282-XPG-P-3ES	SLW	W17282-XPG-P-3ES	A	

DIMENSIONS IN BRACKETS [] ARE IN MILLIMETERS UNLESS INDICATED

RoHS COMPLIANT

△ - CRITICAL CHARACTERISTIC FLAG PER SPEC. XXXX

CUSTOMER PRINT

PART NUMBER: W17282-XPG-P-3ES