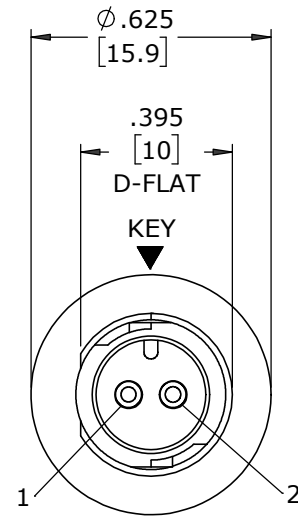


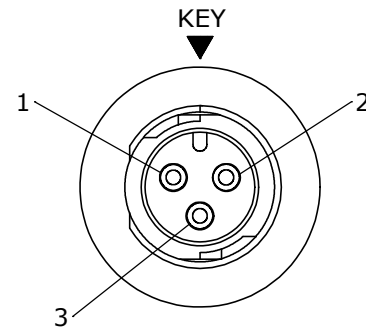
ASS'Y P/N	CONTACT QTY
W17281-2PG-P-300	2 #20
W17281-3PG-P-300	3 #20

NOTES:

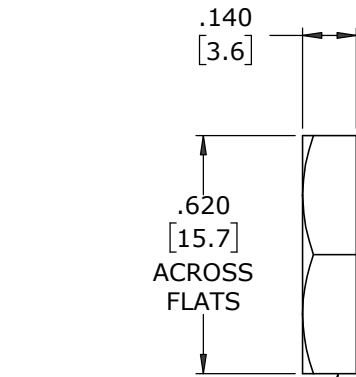
1. ALL PARTS TO BE BULK PACKED
2. CONTACTS TO BE INSERTED INTO HOUSING AS SHOWN.
3. SEE DRAWING HPMCSTD FOR HOLE PATTERN.
4. ALL DIMENSIONS ARE REFERENCE EXCEPT THOSE WITH A TOLERANCE



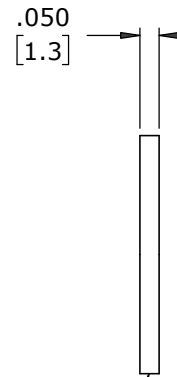
FACE VIEW
W17281-2PG-P-300



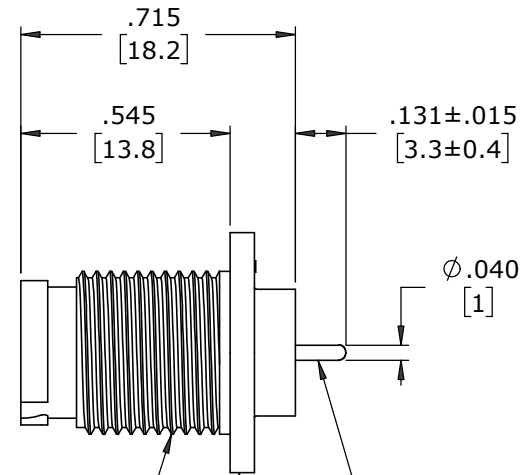
FACE VIEW
W17281-3PG-P-300



HEX NUT
MAT'L: UV PBT, BLACK



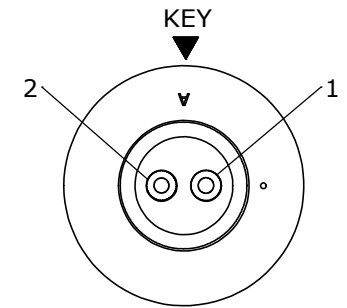
GASKET
MAT'L: NEOPRENE, BLACK



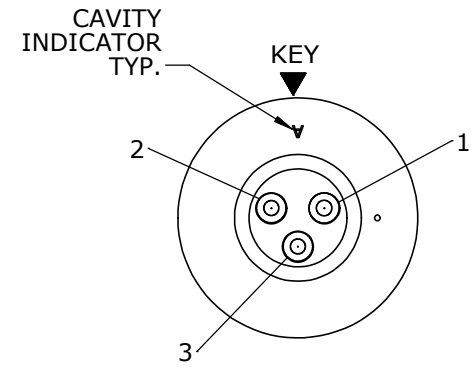
7/16-28 UNEF-2A
MOD, THREAD

PANEL CONNECTOR, MALE
MAT'L: UV PBT, BLACK

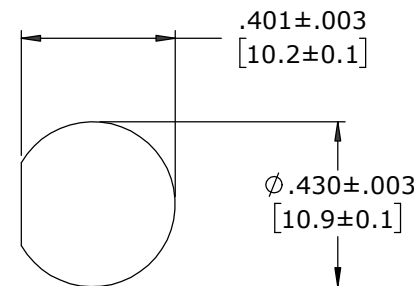
(2-3) #20 PIN CONTACTS, PC TAIL
MAT'L: GOLD PLATED COPPER ALLOY



WIRE VIEW
W17281-2PG-P-300



WIRE VIEW
W17281-3PG-P-300



**RECOMMENDED
PANEL CUT-OUT**

DIMENSIONS IN BRACKETS [] ARE IN MILLIMETERS UNLESS INDICATED

CUSTOMER APPROVAL

THIS DOCUMENT CONTAINS CONFIDENTIAL INFORMATION PROPRIETARY TO CONXALL CORPORATION. ANY REPRODUCTION, DISCLOSURE, OR USE OF THIS DOCUMENT /INFORMATION IS EXPRESSLY PROHIBITED UNLESS AUTHORIZED IN WRITING BY CONXALL CORPORATION.

APPROVED BY: _____
DATE: _____

RoHS COMPLIANT

A	MA	08-05-20	RELEASED PER PDR 18004-2
	JGK	8/12/19	DRAWING CREATED FOR PDR #18004
REV.	INIT.	DATE	DESCRIPTION
	JGK	8/12/19	ORIG. DRAWN BY: JGK DATE: 8/12/19
ALL INFORMATION ILLUSTRATED IS THE PROPERTY OF CONXALL CORPORATION. UNAUTHORIZED DUPLICATION OR DISTRIBUTION OF THIS DOCUMENT IS PROHIBITED.			
ALL UNITS ARE IN FEET, INCHES, FRACTION OF INCHES AND DECIMALS.			
APPROVED BY: _____			<p>601 E. WILDWOOD VILLA PARK, IL 60181</p>
SCALE	SIZE	SHEET	
NTS	B	1 OF 1	CUSTOMER: _____
FILE:	DIRECTORY:	PART NUMBER:	REV
W17281-XPG-P-300	SLW	W17281-XPG-P-300	A

CUSTOMER PRINT

PART NUMBER: W17281-XPG-P-300