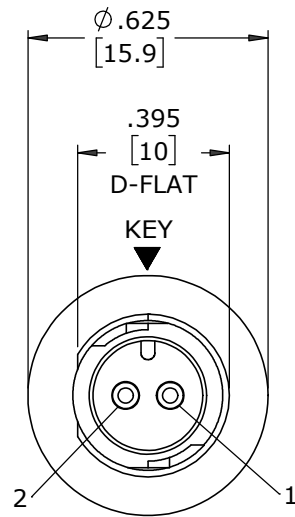


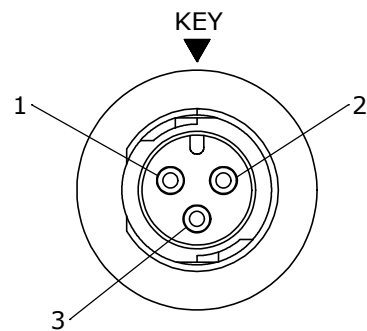
ASS'Y P/N	CONTACT QTY
W17280-2PG-P-300	2 #20
W17280-3PG-P-300	3 #20

NOTES:

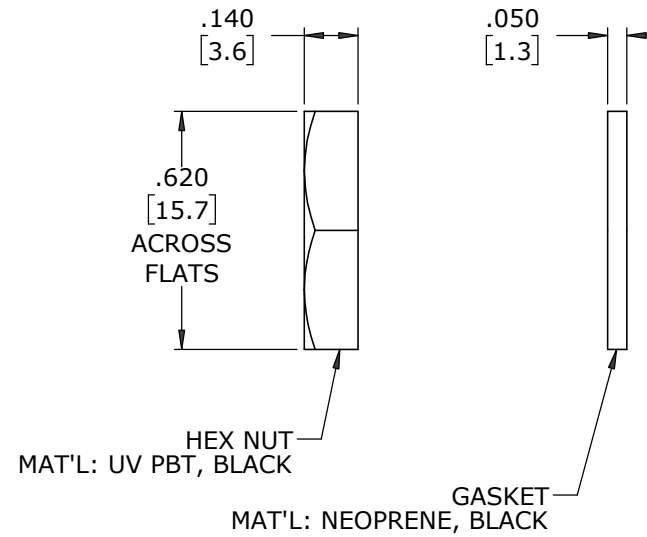
1. ALL PARTS ARE BULK PACKED
2. CONTACTS SHIPPED UNASSEMBLED
3. ALL DIMENSIONS ARE REFERENCE EXCEPT THOSE WITH A TOLERANCE



FACE VIEW
W17280-2PG-P-300



FACE VIEW
W17280-3PG-P-300

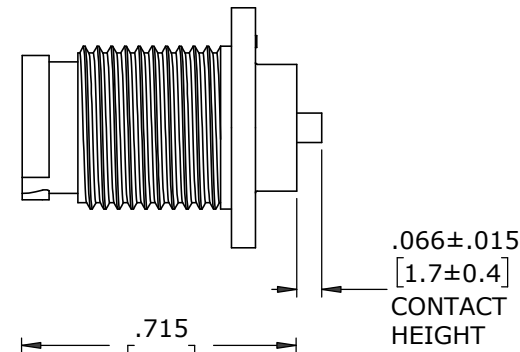


HEX NUT
MAT'L: UV PBT, BLACK

GASKET
MAT'L: NEOPRENE, BLACK

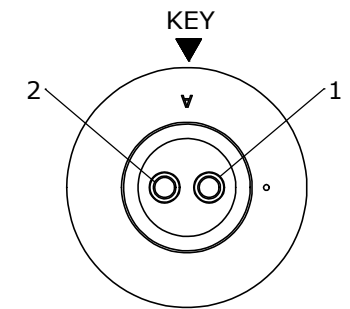
PANEL CONNECTOR, MALE
MAT'L: UV PBT, BLACK

7/16-28 UNEF-2A
MOD. THREAD

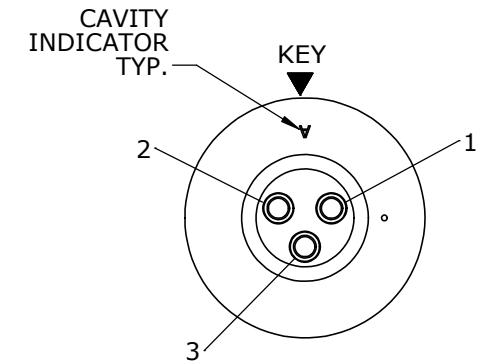


.066±.015
[1.7±0.4]
CONTACT
HEIGHT

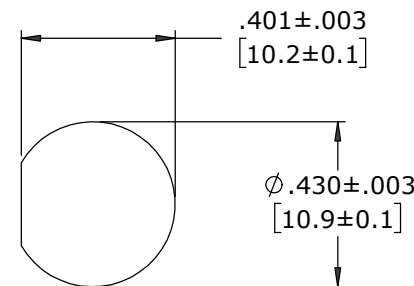
(2-3) #20 PIN CONTACTS, CRIMP
MAT'L: GOLD PLATED COPPER ALLOY



WIRE VIEW
W17280-2PG-P-300



WIRE VIEW
W17280-3PG-P-300



**RECOMMENDED
PANEL CUT-OUT**

CUSTOMER APPROVAL

THIS DOCUMENT CONTAINS CONFIDENTIAL INFORMATION PROPRIETARY TO CONXALL CORPORATION. ANY REPRODUCTION, DISCLOSURE, OR USE OF THIS DOCUMENT /INFORMATION IS EXPRESSLY PROHIBITED UNLESS AUTHORIZED IN WRITING BY CONXALL CORPORATION.

APPROVED BY: _____
DATE: _____

MA	08-12-20	RELEASED PER PDR 18004-2
JGK	8/12/19	DRAWING CREATED FOR PDR #18004
REV.	INIT.	DATE
A	JGK	8/12/19
ORIG. DRAWN BY:		DATE:
JGK		8/12/19
CHECKED BY:		
APPROVED BY:		TITLE:
		PANEL MOUNT ASSEMBLY (2-3) #20 PIN CONTACTS, CRIMP INSTA-CLICK™ MICRO-CON-X STANDARD PRODUCT
SCALE	SIZE	SHEET
NTS	B	1 OF 1
FILE:	DIRECTORY:	PART NUMBER:
W17280-XPG-P-300	SLW	W17280-XPG-P-300
- CRITICAL CHARACTERISTIC FLAG PER SPEC. XXXX		REV
		A

DIMENSIONS IN BRACKETS [] ARE IN MILLIMETERS UNLESS INDICATED

RoHS COMPLIANT

CUSTOMER PRINT

PART NUMBER: W17280-XPG-P-300