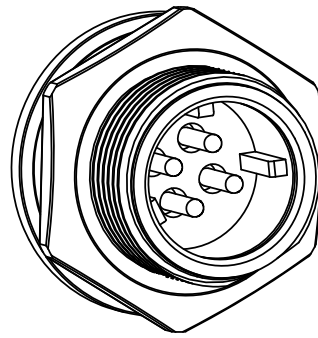
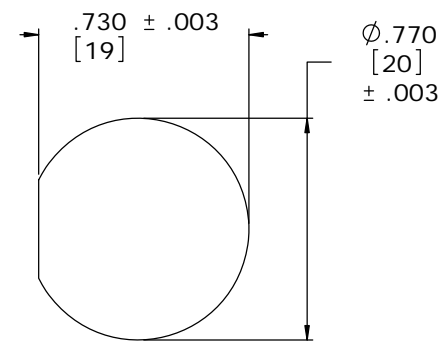


NOTES:

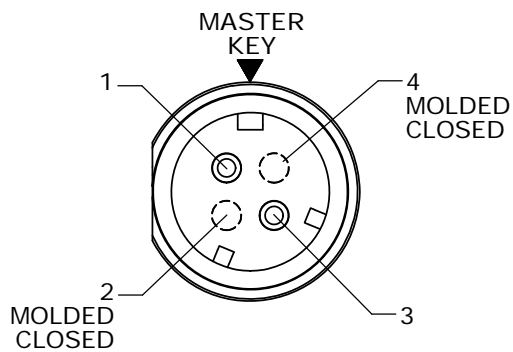
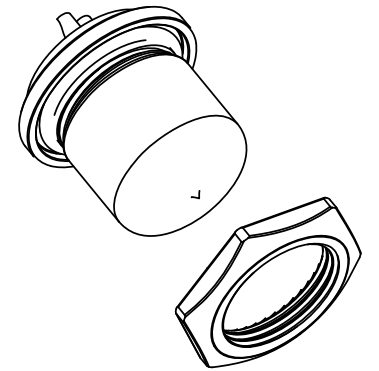
1. FINISHED ASSEMBLIES ARE PACKED INTO A PARTITION BOX, TOTAL (25) PIECES PER BOX.
2. HEX NUT IS BULK PACKED IN A POLY BAG. PROTECTIVE CAP AND O-RING ARE INSTALLED ON CONNECTOR.
3. SOLDER CUP FACE MASTER KEY @ 12 O'CLOCK
4. TERMINATING END OF CONNECTOR TO BE FILLED WITH BLACK EPOXY
5. MASTER KEY AT 12 O'CLOCK
6. PANEL HOUSING FLAT AT 9 O'CLOCK
7. ALL DIMENSIONS ARE REFERENCE EXCEPT THOSE WITH A TOLERANCE



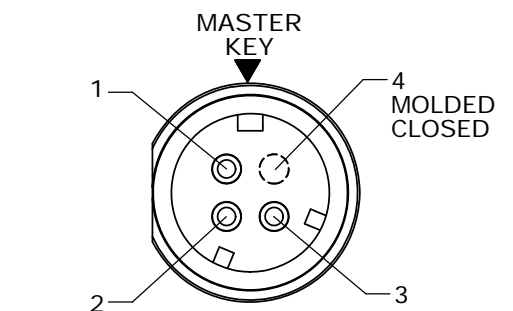
ASSEMBLED VIEW
FOR CUSTOMER REFERENCE ONLY
SF4382-4FPG-3ES SHOWN
(WITHOUT CAP)



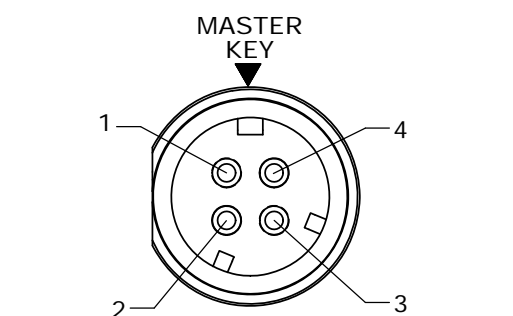
RECOMMENDED
PANEL CUT-OUT



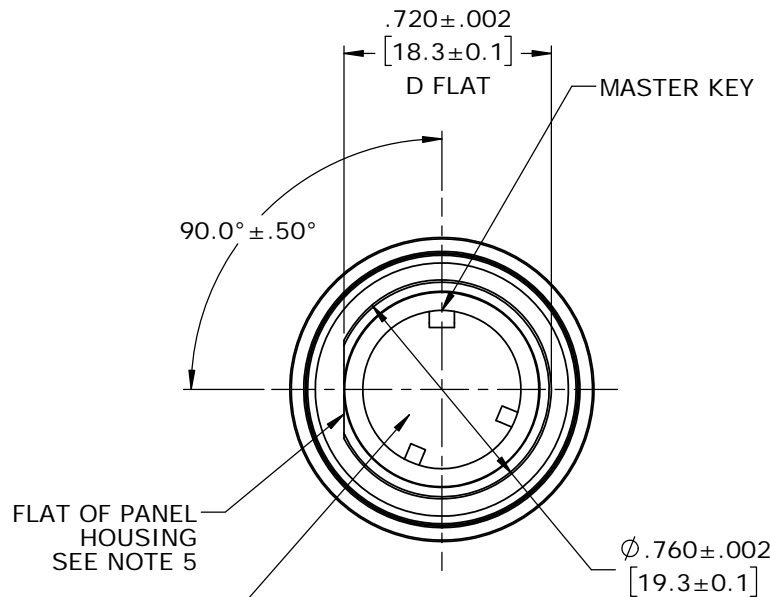
FACE VIEW
SF4382-2FPG-3ES



FACE VIEW
SF4382-3FPG-3ES

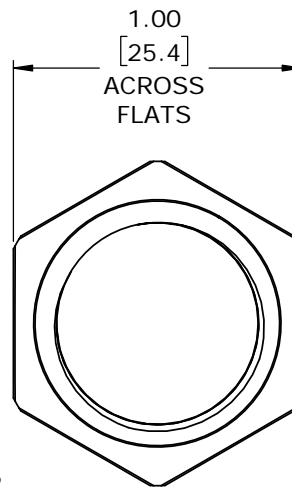


FACE VIEW
SF4382-4FPG-3ES

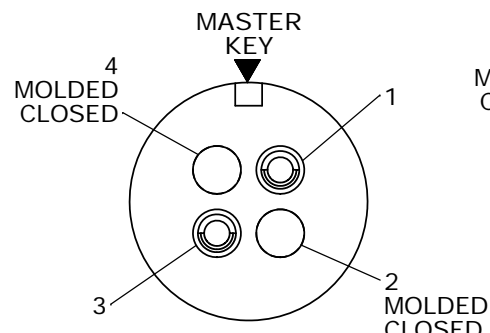


FACE VIEW
"F" KEY

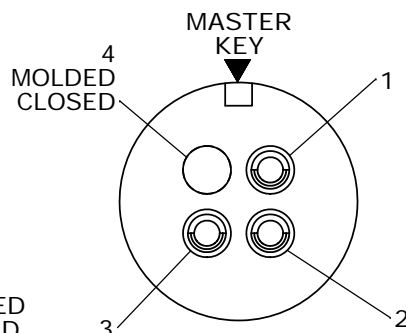
MALE INSERT
MATERIAL: UV PBT, BLACK
Ⓡ



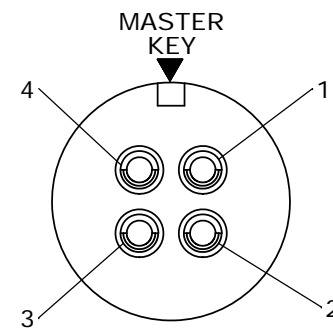
HEX NUT
(UNASSEMBLED)
MATERIAL: BRASS
FINISH: ELECTROLESS
NICKEL PLATED
PER MIL-C-26074



WIRE VIEW
SF4382-2FPG-3ES

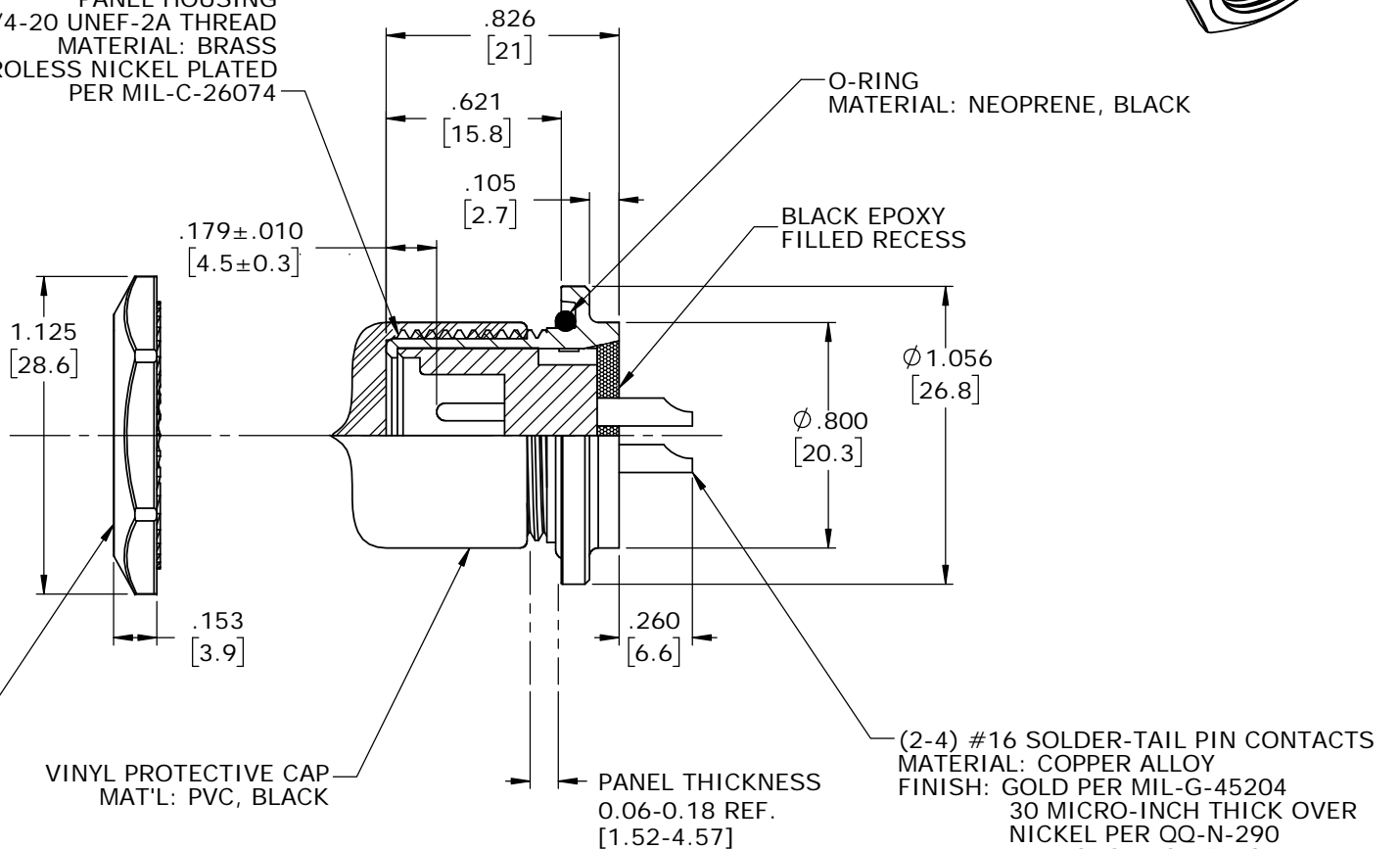


WIRE VIEW
SF4382-3FPG-3ES



WIRE VIEW
SF4382-4FPG-3ES

PANEL HOUSING
3/4-20 UNEF-2A THREAD
MATERIAL: BRASS
FINISH: ELECTROLESS NICKEL PLATED
PER MIL-C-26074



F	MA	10-14-19	MAT'L: OF MALE INSERT WAS THERMOPLASTIC, BLACK PER ECR 9439	
E	JD	04-15-16	UPDATED PIN HEIGHT DIMS PER ECR 8197. UPDATED PACKAGING / SHIPPING NOTES PER ECR 8380	
D	JAD	08-23-13	UPDATED MANUFACTURING NOTES PER ECR 8379	
C	PD	10-23-12	ADDED SF4382-2FPG-3ES AND SF4382-3FPG-3ES CONVERTED TO FAMILY DRAWING PER DOR 12-E149SL #32	
B	DT	07-21-08	UPDATED MFG DRAWING PER ECR 6903	
A	SXL	10-17-05	DRAWING CREATED PER DOR 03-E143CS-3	
REV.	INIT.	DATE	DESCRIPTION	
ALL INFORMATION ILLUSTRATED IS THE PROPERTY OF "CONKALL CORPORATION". UNAUTHORIZED DUPLICATION OR DISTRIBUTION OF THIS DOCUMENT IS PROHIBITED.			ORIG. DRAWN BY: S.X.LOU	DATE: 09-23-05
ALL UNITS ARE IN FEET, INCHES, FRACTION OF INCHES AND DECIMALS.			CHECKED BY:	
▷ - CRITICAL CHARACTERISTIC FLAG PER SPEC. XXXX			APPROVED BY:	
			SCALE: NTS	SHEET: 1 OF 1
			FILE: SF4382-XFPG-3ES	DIRECTORY: SLW
			PART NUMBER: SF4382-XFPG-3ES	REV: F

conxall
601 E. WILDWOOD VILLA PARK, IL 60181

TITLE: PANEL CONNECTOR ASSEMBLY
(2-4) PIN CONTACTS
SHIELDED MULTI-CON-X, "F" KEY
STANDARD PRODUCT

DIMENSIONS IN BRACKETS [] ARE METRIC