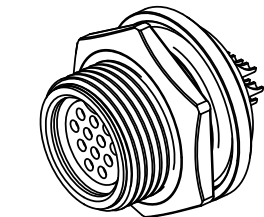
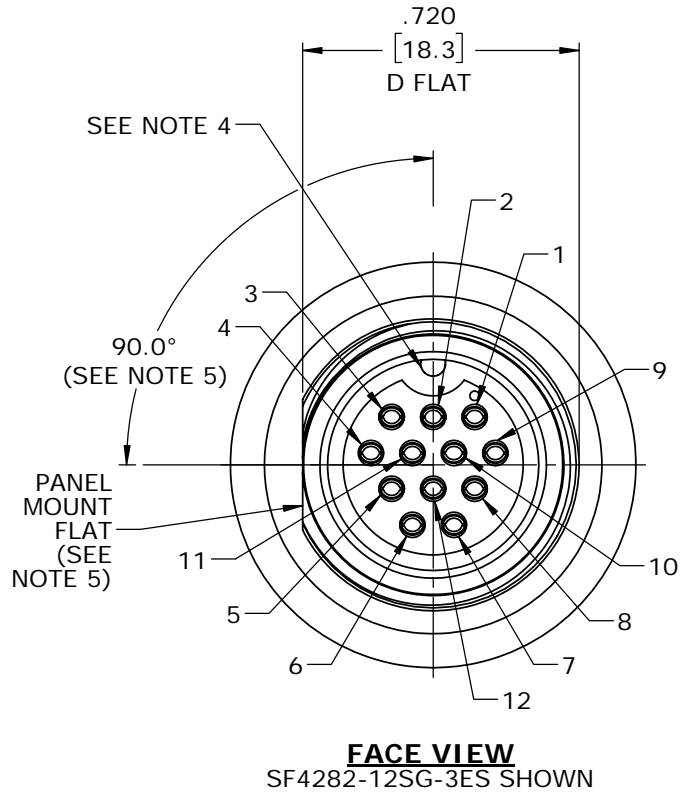


CUSTOMER PRINT

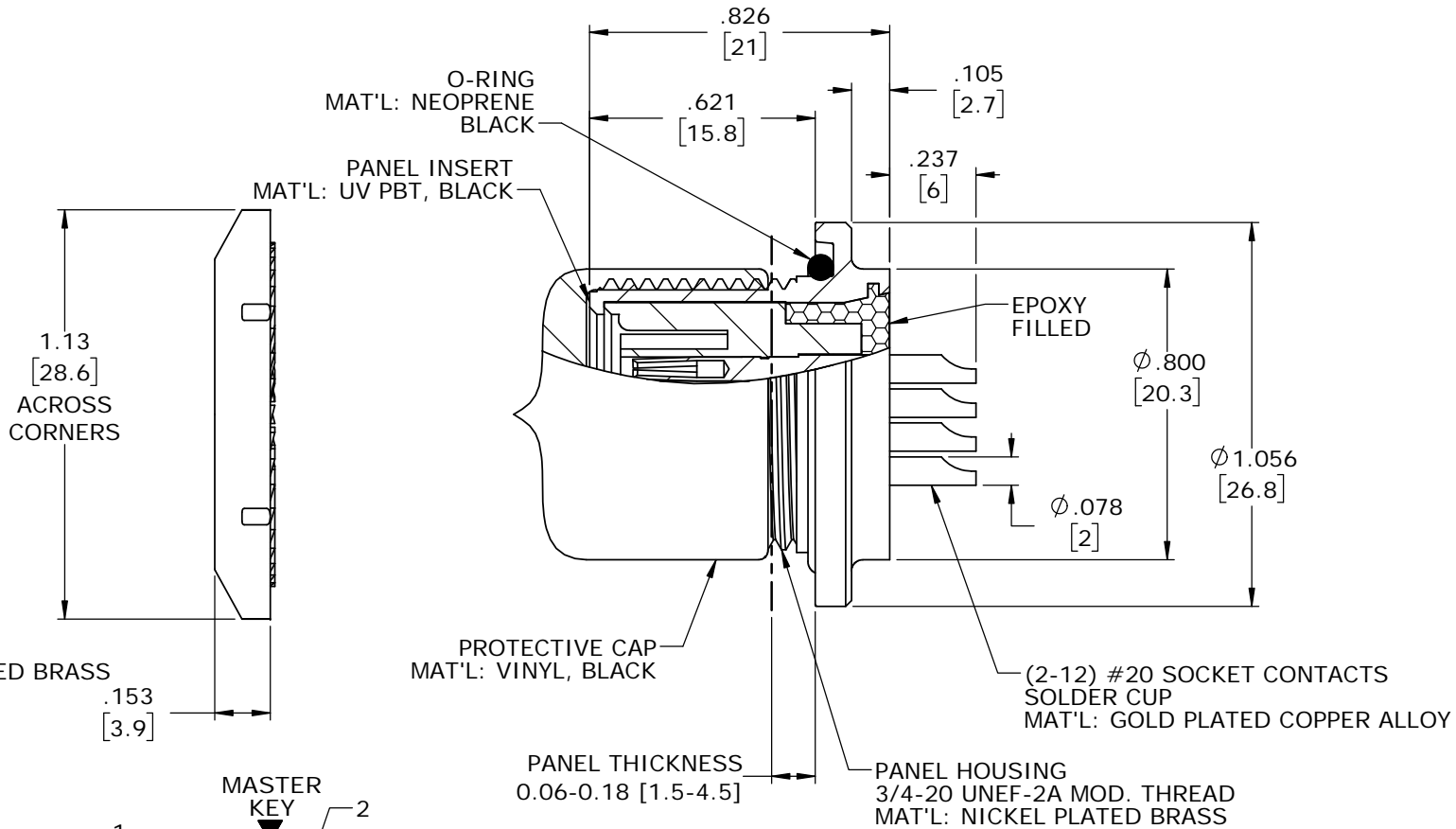
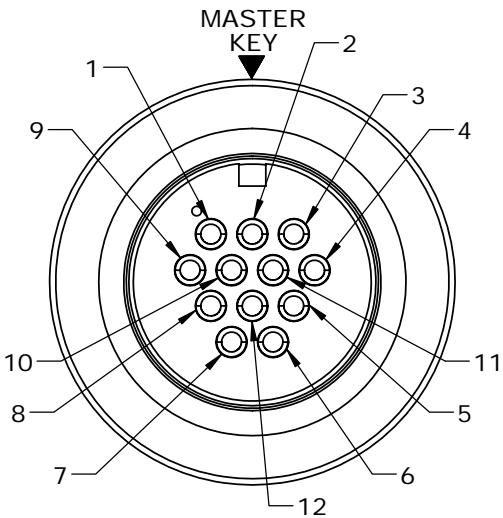
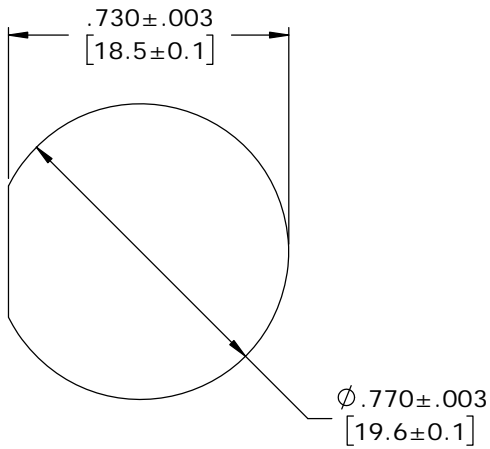
PART NUMBER: SF4282-XXSG-3ES

NOTES:

1. FINISHED CONNECTOR ASSEMBLIES ARE PACKED INTO A PARTITION BOX, 25 PIECES PER BOX. BOX IS LABELED WITH CONXALL PART NUMBER AND DATE CODE.
2. HEX NUT IS BULK PACKED IN POLY BAG. O-RING AND PROTECTIVE CAP ARE ASSEMBLED ONTO THE CONNECTOR.
3. TERMINATING END OF CONNECTOR IS FILLED WITH EPOXY.
4. MASTER KEY IS AT 12 O'CLOCK.
5. PANEL MOUNT FLAT IS AT 9 O'CLOCK.
6. SOLDER CUPS TO FACE MASTER KEY OF INSERT.
7. ALL DIMENSIONS ARE REFERENCE EXCEPT THOSE WITH A TOLERANCE



ASSEMBLED VIEW
WITHOUT CAP
SF4282-12VG-3ES SHOWN



POSITIONS												
PART NUMBER	POS 1	POS 2	POS 3	POS 4	POS 5	POS 6	POS 7	POS 8	POS 9	POS 10	POS 11	POS 12
SF4282-2SG-3ES	---	---	---	OPEN	---	---	---	---	OPEN	---	---	---
SF4282-3SG-3ES	OPEN	---	OPEN	---	---	---	---	---	---	---	---	OPEN
SF4282-4SG-3ES	OPEN	---	OPEN	---	OPEN	---	---	OPEN	---	---	---	---
SF4282-5SG-3ES	---	OPEN	---	OPEN	---	OPEN	OPEN	---	OPEN	---	---	---
SF4282-6SG-3ES	OPEN	OPEN	---	OPEN	OPEN	---	OPEN	OPEN	---	---	---	---
SF4282-7SG-3ES	OPEN	OPEN	OPEN	OPEN	---	OPEN	OPEN	---	OPEN	---	---	---
SF4282-8SG-3ES	OPEN	---	OPEN	OPEN	OPEN	OPEN	OPEN	OPEN	OPEN	---	---	---
SF4282-9SG-3ES	OPEN	OPEN	OPEN	OPEN	OPEN	OPEN	OPEN	OPEN	OPEN	---	---	---
SF4282-11SG-3ES	OPEN	OPEN	OPEN	OPEN	OPEN	OPEN	OPEN	OPEN	OPEN	OPEN	OPEN	---
SF4282-10SG-3ES	OPEN	OPEN	OPEN	OPEN	OPEN	OPEN	OPEN	OPEN	OPEN	OPEN	---	---
SF4282-12SG-3ES	OPEN	OPEN	OPEN	OPEN	OPEN	OPEN	OPEN	OPEN	OPEN	OPEN	OPEN	OPEN

"---" HALF CLOSED FROM WIRE END

RoHS COMPLIANT

B	MA	03-10-20	UPDATED MANUFACTURING DRAWING PER ECR 9503					
	MA	10-31-19	RELEASED PER PDR 15019					
	A	JGK	12/20/18	REMOVED "E" DESIGNATION IN ALL P/N'S.				
		JGK	03/23/18	UPDATED HOLE PIN-OUT PATTERN TO MATCH CON-X PANEL PIN-OUT.				
		JGK	12/01/17	DRAWING CREATED FOR PROJECT #15019.				
REV.	INIT.	DATE	DESCRIPTION					
<div>ALL INFORMATION ILLUSTRATED IS THE PROPERTY OF "CONXALL CORPORATION". UNAUTHORIZED DUPLICATION OR DISTRIBUTION OF THIS DOCUMENT IS PROHIBITED.</div> <div>ALL UNITS ARE IN FEET, INCHES, FRACTION OF INCHES AND DECIMALS. UNLESS OTHERWISE SPECIFIED TOLERANCES: 3 PLACE DECIMALS ±.005 ANGLES ±1° FRACTIONS ±1/16</div> <div>▷ = CRITICAL CHARACTERISTIC FLAG PER SPEC. XXXX</div>			ORIG. DRAWN BY: JGK		DATE: 12/01/17		<div>conxall</div> <div>601 E. WILDWOOD VILLA PARK, IL 60181</div>	
			CHECKED BY:					
			APPROVED BY:				TITLE: SHIELDED PANEL ASSEMBLY (2-12) #20 SOLDER CUP, SOCKET CONTACTS SHIELDED MULTI-CON-X STANDARD PRODUCT	
			SCALE	SIZE	SHEET		CUSTOMER:	
			NTS	B	1 OF 1			
FILE: SF4282-XXSG-3ES		DIRECTORY: SLW		PART NUMBER: SF4282-XXSG-3ES		REV B		