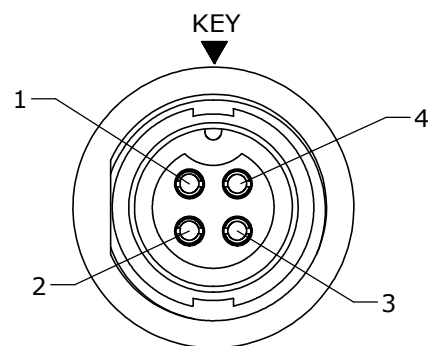
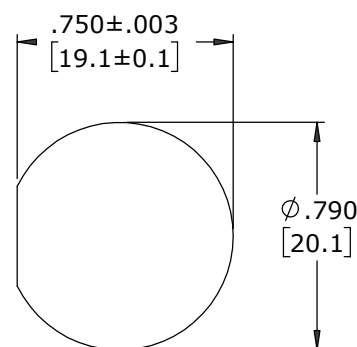


NOTES:

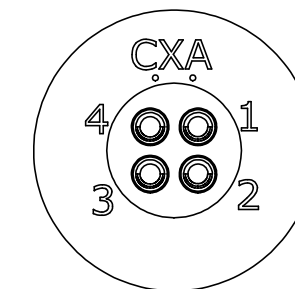
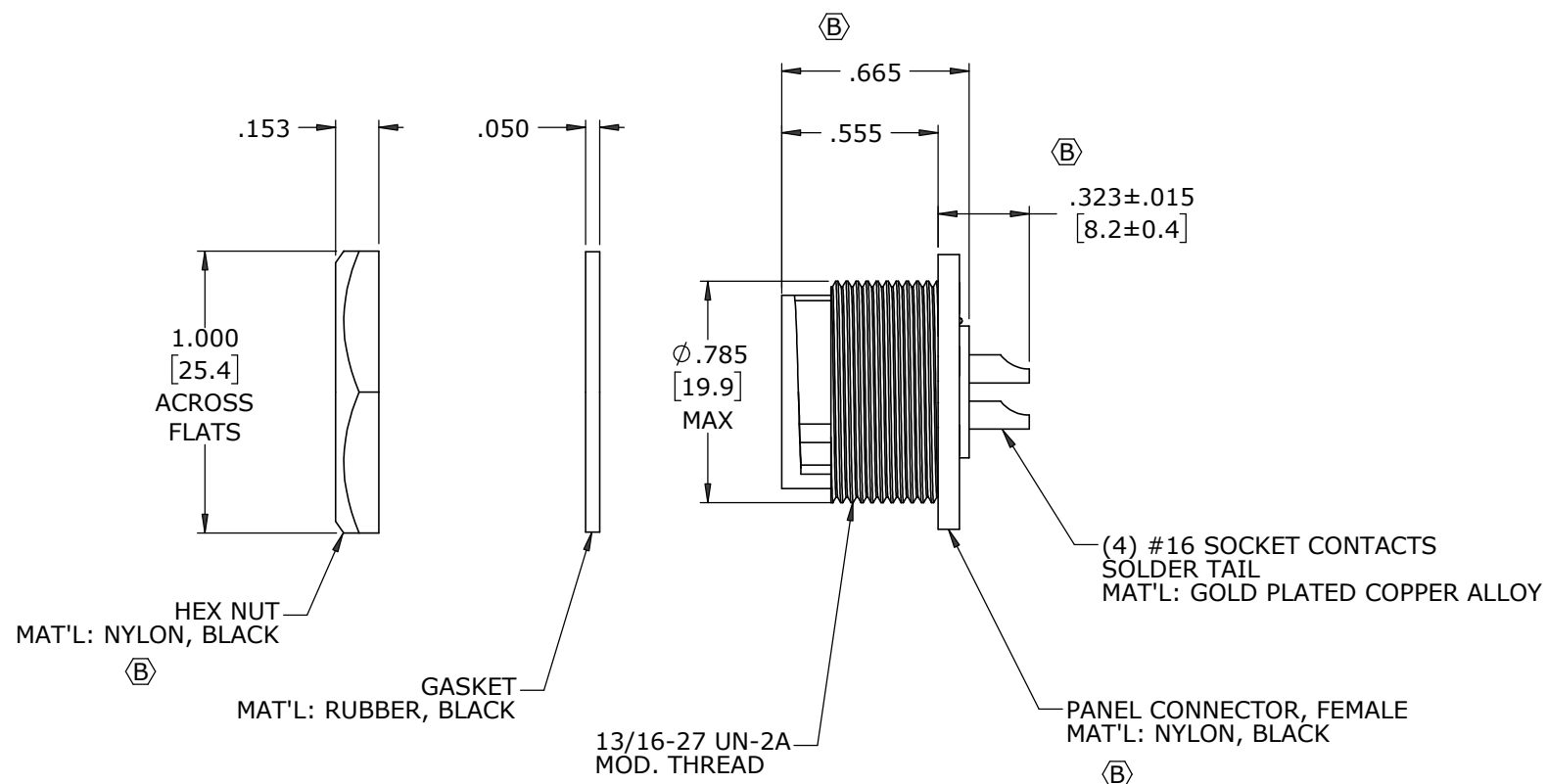
1. ALL PARTS TO BE BULK PACKED.
2. CONTACTS ARE INSTALLED INTO CONNECTOR.
3. ALL DIMENSIONS ARE REFERENCE EXCEPT THOSE WITH A TOLERANCE



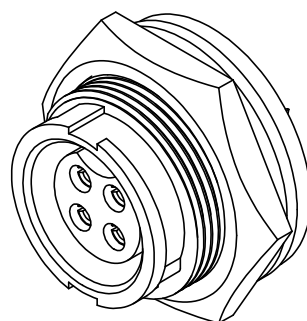
FACE VIEW



**RECOMMENDED
PANEL CUT OUT**
TOLERANCE: ±.003



WIRING VIEW



SHOWN ASSEMBLED KIT
FOR CUSTOMER REFERENCE ONLY

DIMENSIONS IN BRACKETS [] ARE METRIC

CUSTOMER APPROVAL

THIS DOCUMENT CONTAINS CONFIDENTIAL INFORMATION PROPRIETARY TO CONXALL CORPORATION. ANY REPRODUCTION, DISCLOSURE, OR USE OF THIS DOCUMENT /INFORMATION IS EXPRESSLY PROHIBITED UNLESS AUTHORIZED IN WRITING BY CONXALL CORPORATION.

APPROVED BY: _____
DATE: _____

RoHS COMPLIANT

REV: B	INIT: MA	DATE: 01-27-23	DESCRIPTION: .323 ±.015 WAS .328 ±.015, .665 WAS .655. HEX NUT & CONNECTOR MAT'L WAS THERMOPLASTIC PER ECR 9705
REV: A	INIT: AN	DATE: 01-20-16	DESCRIPTION: DRAWING CREATED PER DOR 16-E149SL #2
REV: INIT:	DATE:	DESCRIPTION:	
ALL INFORMATION ILLUSTRATED IS THE PROPERTY OF "CONXALL CORPORATION". UNAUTHORIZED DUPLICATION OR DISTRIBUTION OF THIS DOCUMENT IS PROHIBITED.		ORIG. DRAWN BY: AN	DATE: 01-20-16
ALL UNITS ARE IN FEET, INCHES, FRACTION OF INCHES AND DECIMALS. UNLESS OTHERWISE SPECIFIED TOLERANCES: 3 PLACE DECIMALS ±.010 ANGLES ±1° FRACTIONS ±1/16 - CRITICAL CHARACTERISTIC FLAG PER SPEC. XXXX		CHECKED BY:	 601 E. WILDWOOD VILLA PARK, IL 60181
APPROVED BY:		TITLE: PANEL MOUNT ASSEMBLY (4) #16 SOCKET CONTACTS, SOLDER MULTI-CON-X STANDARD PRODUCT	
SCALE: NTS	SIZE: B	SHEET: 1 OF 1	CUSTOMER: STANDARD PRODUCT
FILE: 4382-4SG-300	DIRECTORY: SLW	PART NUMBER: 4382-4SG-300	REV: B