

ASSY P/N	CONTACT QTY.
4181-2PG-300	2 #12
4181-3PG-300	3 #12
4181-4PG-300	4 #12

NOTES:

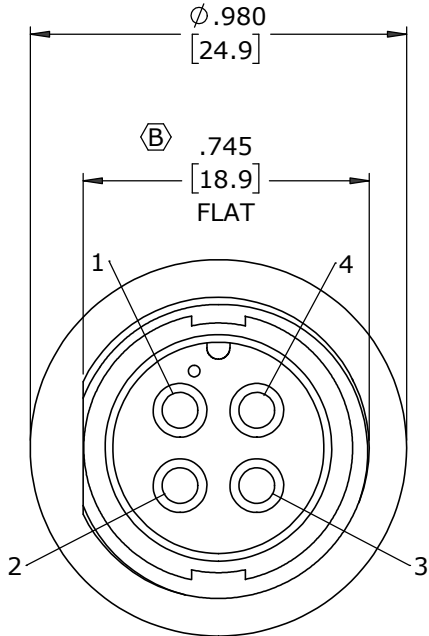
- B

1. FINISHED PRODUCT TO BE BOXED.
HEX NUTS AND GASKETS MAY BE PACKAGED SEPARATELY.

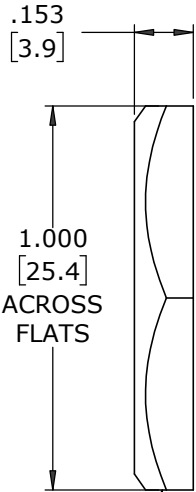
2. CONTACTS ASSEMBLED INTO CONNECTOR

3. ALL DIMENSIONS ARE REFERENCE EXCEPT THOSE WITH A TOLERANCE

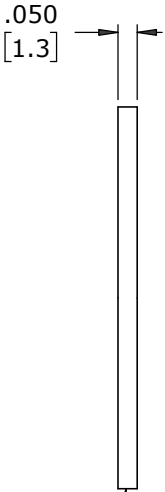
4. SEE DRAWING HPMUSTD FOR HOLE PATTERN



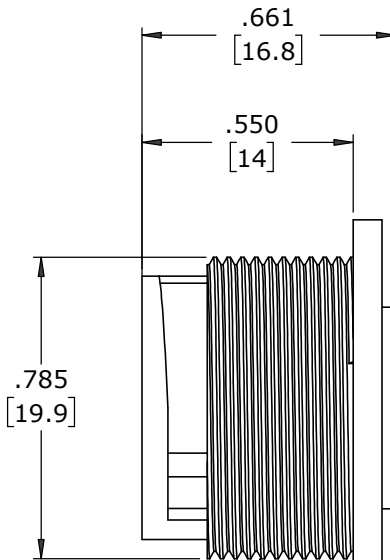
FACE VIEW
4181-4PG-300



HEX NUT
MAT'L: NYLON, BLACK



GASKET
MAT'L: RUBBER, BLACK



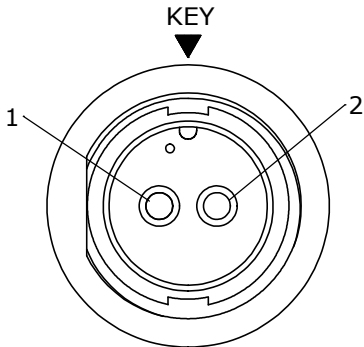
B

.168±.015
[4.3±0.4]

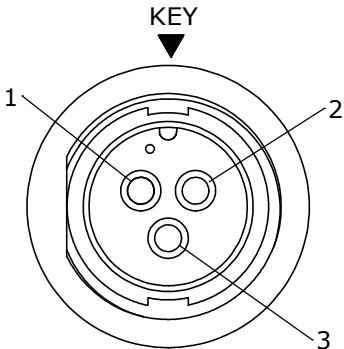
Ø .059
.056
[1.5]
[1.4]

(2-4) #12 PIN CONTACTS
0.190 P.C. TAIL
MAT'L: GOLD PLATED COPPER ALLOY

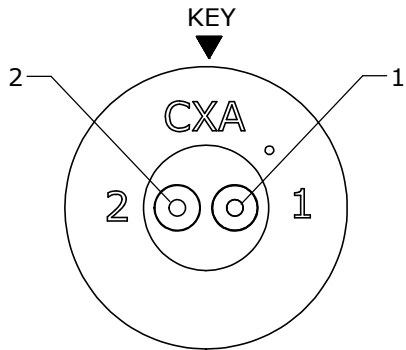
PANEL CONNECTOR
MAT'L: NYLON, BLACK



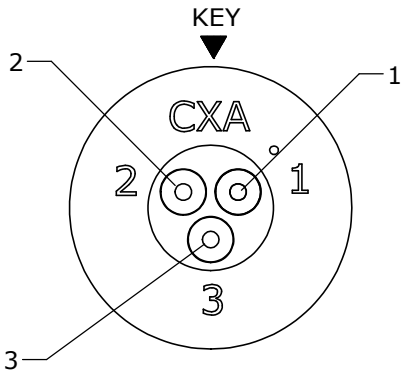
FACE VIEW
4181-2PG-300



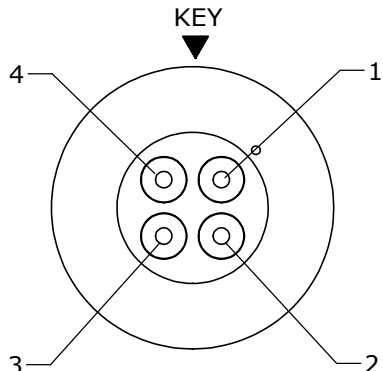
FACE VIEW
4181-3PG-300



WIRING VIEW
4181-2PG-300



WIRING VIEW
4181-3PG-300



WIRING VIEW
4181-4PG-300

DIMENSIONS IN BRACKETS [] ARE IN MILLIMETERS

CUSTOMER APPROVAL

THIS DOCUMENT CONTAINS CONFIDENTIAL INFORMATION PROPRIETARY TO CONXALL CORPORATION. ANY REPRODUCTION, DISCLOSURE, OR USE OF THIS DOCUMENT /INFORMATION IS EXPRESSLY PROHIBITED UNLESS AUTHORIZED IN WRITING BY CONXALL CORPORATION.

APPROVED BY: _____
DATE: _____

RoHS COMPLIANT

B	MA	12-11-20	CONTACT HEIGHT WAS .190, .745 WAS .755. REMOVED TOL. FROM ALL OTHER DIMS PER ECR 9218-2. PACKAGING NOTE 1 WAS BULK PACK PER ECR 9553						
A	BZ	06-10-10	DRAWING CREATED PER DOR 10-E149SL						
REV.	INIT.	DATE	DESCRIPTION						
<div>ALL INFORMATION ILLUSTRATED IS THE PROPERTY OF "CONXALL CORPORATION". UNAUTHORIZED DUPLICATION OR DISTRIBUTION OF THIS DOCUMENT IS PROHIBITED.</div>			ORIG. DRAWN BY: DATE: BZ 06-10-10		<div>conxall</div> <div>601 E. WILDWOOD VILLA PARK, IL 60181</div>				
			CHECKED BY:						
<div>ALL UNITS ARE IN FEET, INCHES, FRACTION OF INCHES AND DECIMALS.</div> <div>UNLESS OTHERWISE SPECIFIED TOLERANCES: 3 PLACE DECIMALS ±.010 ANGLES ±1° FRACTIONS ±1/16</div> <div>▷ = CRITICAL CHARACTERISTIC FLAG PER SPEC. XXXX</div>			APPROVED BY:		TITLE: PANEL MOUNT ASSEMBLY (2-4) #12 PIN CONTACTS PC TAIL MULTI-CON-X				
			<table><tr><td>SCALE</td><td>SIZE</td><td>SHEET</td></tr><tr><td>NTS</td><td>B</td><td>1 OF 1</td></tr></table>		SCALE	SIZE	SHEET	NTS	B
SCALE	SIZE	SHEET							
NTS	B	1 OF 1							
FILE:			DIRECTORY:		PART NUMBER:				
4181-XPG-300			SLW		4181-XPG-300				
					REV	B			