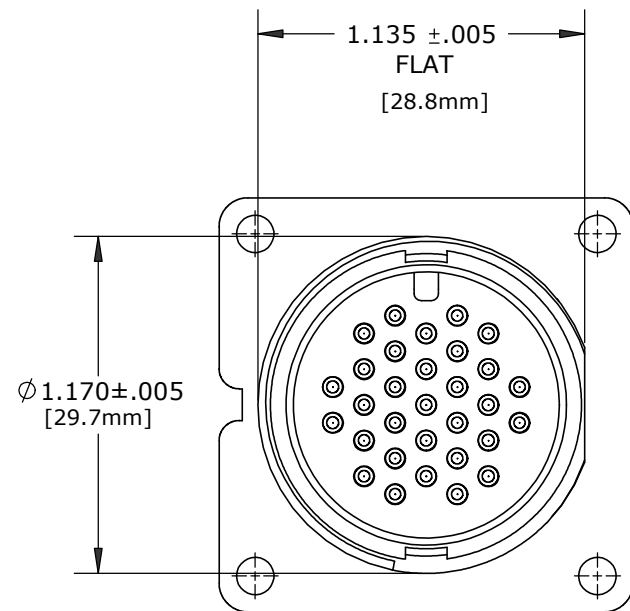
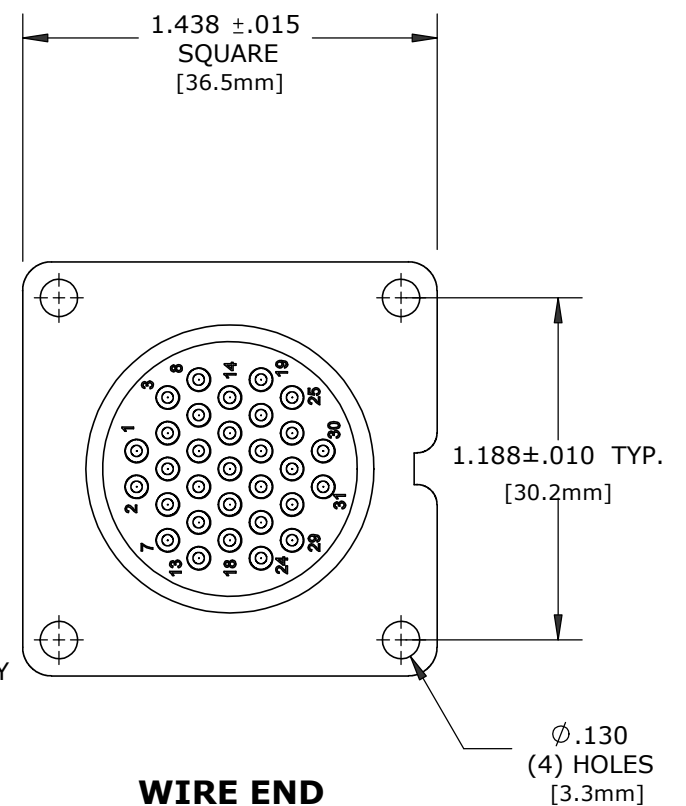
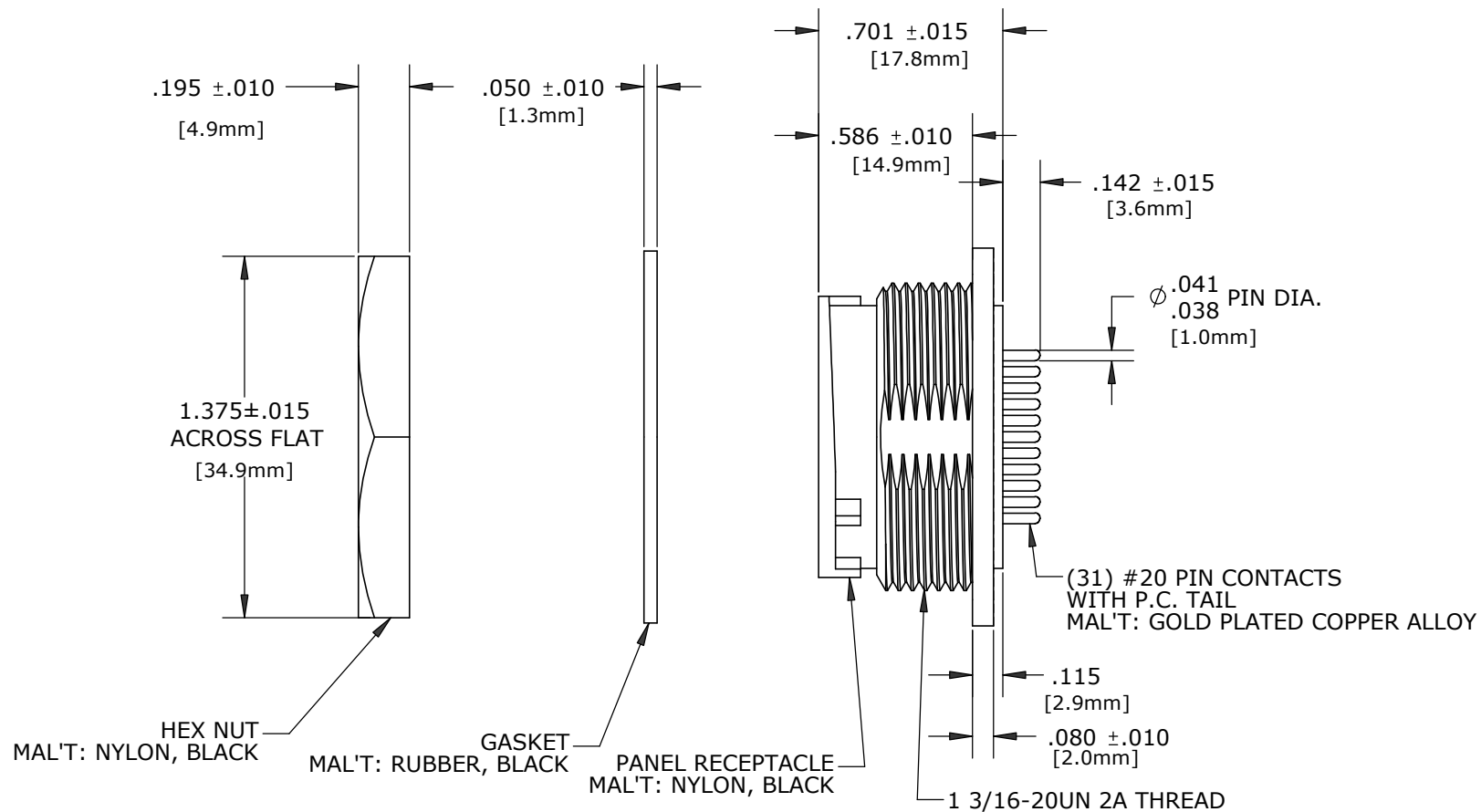
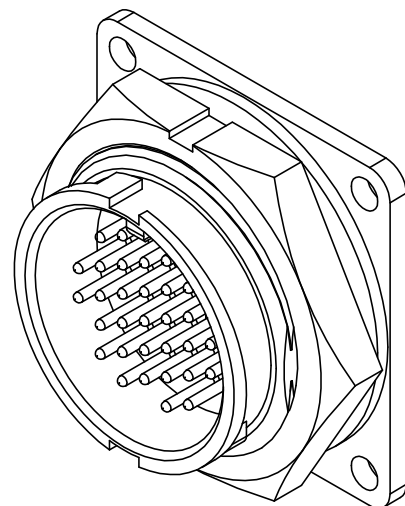
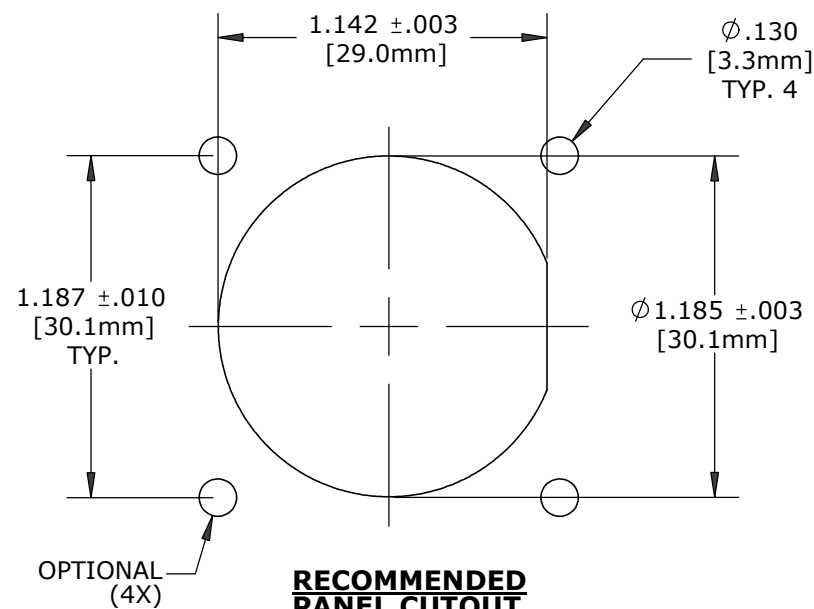


- NOTES:
1. FINISHED PRODUCT TO BE BOXED.
GASKETS AND HEX NUTS MAY BE PACKAGED SEPARATELY.
 2. INSTALL CONTACTS INTO CONNECTOR AS SHOWN
 3. ALL DIMENSIONS ARE REFERENCE EXCEPT THOSE WITH A TOLERANCE.
 4. SEE DRAWING HPMGSTD FOR HOLE PATTERN.

**MATING FACE****WIRE END****CUSTOMER APPROVAL**

THIS DOCUMENT CONTAINS CONFIDENTIAL INFORMATION PROPRIETARY TO CONXALL CORPORATION. ANY REPRODUCTION, DISCLOSURE, OR USE OF THIS DOCUMENT /INFORMATION IS EXPRESSLY PROHIBITED UNLESS AUTHORIZED IN WRITING BY CONXALL CORPORATION.

APPROVED BY: _____
DATE: _____

**RECOMMENDED
PANEL CUTOUT**

D	SS	05-12-21	PACKAGING WAS 50 PCS. PER BAG PER ECR 9586	
C	PD	08-25-11	REVISED NOTE 1. PER ECR 7946	
B	AN	10-13-10	UPDATED PANEL CUTOUT DIM., 1.142 WAS 1.140 & 1.185 WAS 1.170, ADDED TOLERANCES AND MATERIAL. PER ECR 7636	
A1	RCS	02-26-02	UPDATED DRAWING PER DOR #02-4021KZ	
A	LR	04-16-96	CREATED CATALOG DWG.	
REV.	INIT.	DATE	DESCRIPTION	
ALL INFORMATION ILLUSTRATED IS THE PROPERTY OF "CONXALL CORPORATION". UNAUTHORIZED DUPLICATION OR DISTRIBUTION OF THIS DOCUMENT IS PROHIBITED.			ORIG. DRAWN BY: LR	DATE: 04-16-96
ALL UNITS ARE IN FEET, INCHES, FRACTION OF INCHES AND DECIMALS. UNLESS OTHERWISE SPECIFIED TOLERANCES: 3 PLACE DECIMALS ±.010 ANGLES ±1° FRACTIONS ±1/16 = CRITICAL CHARACTERISTIC FLAG PER SPEC. XXXX			CHECKED BY:	
			APPROVED BY:	
			SCALE: NTS	SIZE: B
			SHEET: 1 OF 1	
			FILE: 24281-31PG-300	DIRECTORY: SLW
			TITLE: PANEL CONNECTOR ASSY 31 #20 PC PIN CONTACTS MEGA-CON-X STANDARD PRODUCT	
			CUSTOMER: 24281-31PG-300	REV D