

CUSTOMER PRINT

PART NUMBER: 17984-XPG-300

ASS'Y P/N	CONTACT QTY.	KEY STYLE
17984-5PG-300	5	A-KEY
17984-6PG-300	6	B-KEY
17984-7PG-300	7	A-KEY

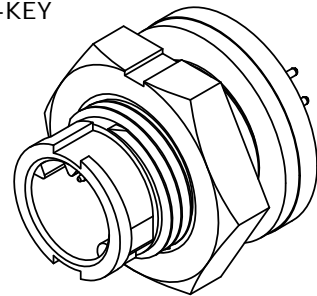
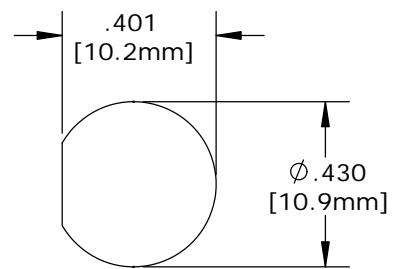
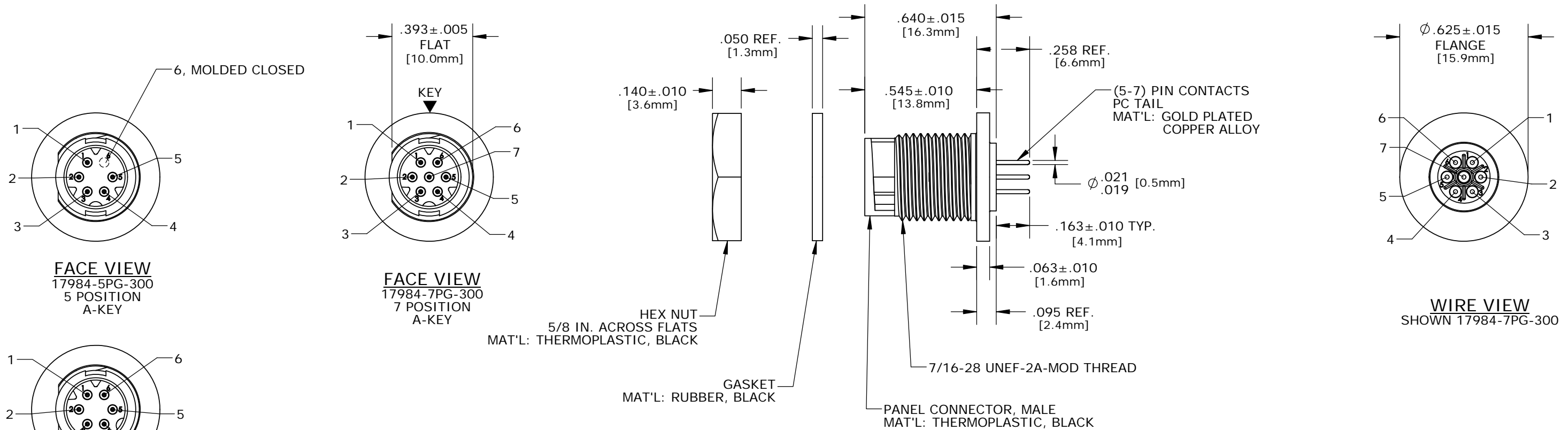
NUMBER OF CONTACTS

NOTES:

- PANEL CONNECTORS TO BE PACKED IN PARTITION BOX, 100 PC PER BOX
HEX NUT AND GASKET TO BE BULK PACKED IN A SEPARATE BAG FROM
PANEL ASSEMBLY PACKAGE.
a) BOX LABEL WITH CXA PART NUMBER, QUANTITY, LOT # AND DATE
CODE ON LABEL AS SHOWN AND PLACE ONTO THE TOP BOX.

P/N: 17984-XPG-300
CONXALL
QTY.:
Lot:
Date Code:

- CONTACTS ARE ASSEMBLED INTO PANEL CONNECTOR.
- SEE DRAWING HPMCSTD FOR HOLE PATTERN.



SHOWN ASSEMBLED
FOR CUSTOMER REFERENCE ONLY

DIMENSIONS IN BRACKET [] ARE METRIC.

CUSTOMER APPROVAL

THIS DOCUMENT CONTAINS CONFIDENTIAL INFORMATION PROPRIETARY TO CONXALL CORPORATION. ANY REPRODUCTION, DISCLOSURE, OR USE OF THIS DOCUMENT / INFORMATION IS EXPRESSLY PROHIBITED UNLESS AUTHORIZED IN WRITING BY CONXALL CORPORATION.

APPROVED BY: _____
DATE: _____

D	MA	05/18/17	100 PIECES WAS 200 PIECES PER ECR 8942
C	AN	12-03-13	ADDED NOTE 1a AND BOX LABEL PER ECR 8095
B	PD	12-04-12	MAT'L WAS NYLON PER DOR 12-E149SL #45
A	AN	11-07-11	DRAWING CREATED PER DOR 11-E149SL
REV.	INIT.	DATE	DESCRIPTION
ORIG. DRAWN BY:		DATE:	<p>601 E. WILDWOOD VILLA PARK, IL 60181</p>
PAK		07-19-11	
ALL INFORMATION ILLUSTRATED IS THE PROPERTY OF CONXALL CORPORATION. UNAUTHORIZED DUPLICATION OR DISTRIBUTION OF THIS DOCUMENT IS PROHIBITED.		CHECKED BY:	<p>TITLE: PANEL CONNECTOR ASSEMBLY (5-7) PIN CONTACTS, PC TAIL MICRO-CON-X, A-KEY & B-KEY STANDARD PRODUCT</p>
ALL UNITS ARE IN FEET, INCHES, FRACTION OF INCHES AND DECIMALS.		APPROVED BY:	
3 PLACE DECIMALS ±.010	SCALE	SIZE	SHEET
	NTS	B	1
FILE:	DIRECTORY:	PART NUMBER:	REV
17984-XPG-300	SLW	17984-XPG-300	D

RoHS COMPLIANT