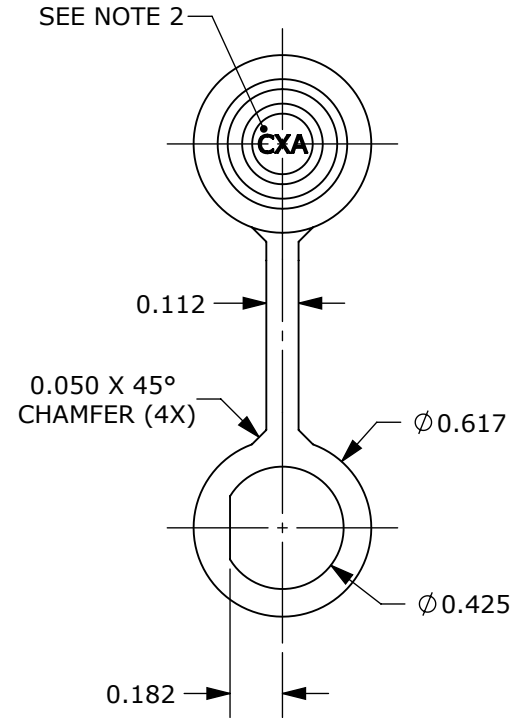
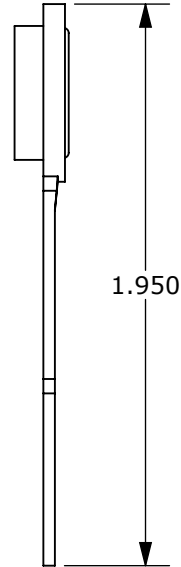
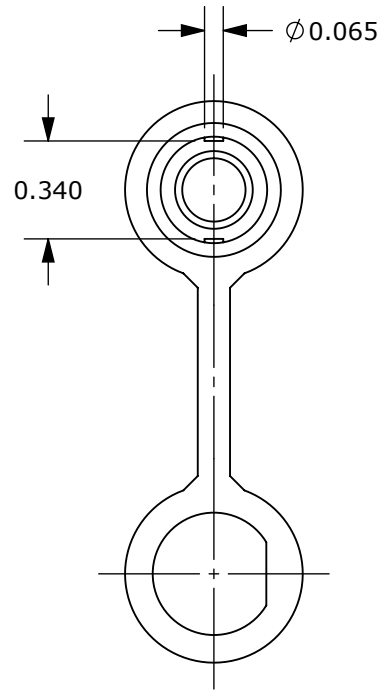



PROPRIETARY

- NOTES:
 1. MATERIAL: RUBBER, BLACK
 2. CHARACTER HEIGHT TO BE 0.062 & RAISED 0.007/0.010

THIS DOCUMENT CONTAINS CONFIDENTIAL INFORMATION PROPRIETARY TO CONXALL CORPORATION. ANY REPRODUCTION, DISCLOSURE, OR USE OF THIS DOCUMENT /INFORMATION IS EXPRESSLY PROHIBITED UNLESS AUTHORIZED IN WRITING BY CONXALL CORPORATION.



B	AN	07-03-13	CREATED CUSTOMER PDF PER DOR #13-E149SL #25 / DOR 13-5392JS	
REV.	INIT.	DATE	DESCRIPTION	
ALL INFORMATION ILLUSTRATED IS THE PROPERTY OF CONXALL CORPORATION. UNAUTHORIZED DUPLICATION OR DISTRIBUTION OF THIS DOCUMENT IS PROHIBITED.			ORIG. DRAWN BY: L.COMAN DATE: 12-28-93	 601 E. WILDWOOD VILLA PARK, IL 60181
ALL UNITS ARE IN FEET, INCHES, FRACTION OF INCHES AND DECIMALS.			CHECKED BY:	
			APPROVED BY:	TITLE: DUST CAP WITH TETHER MICRO-CON-X
SCALE		SIZE	SHEET	
NTS		A	1 OF 1	
FILE:	16295_CD	DIRECTORY:	SLW	PART NUMBER: 16295
				REV B

RoHS COMPLIANT

≡ CRITICAL CHARACTERISTIC FLAG PER SPEC. XXXX