

CUSTOMER PRINT

PART NUMBER: 14292-20PG-3ES

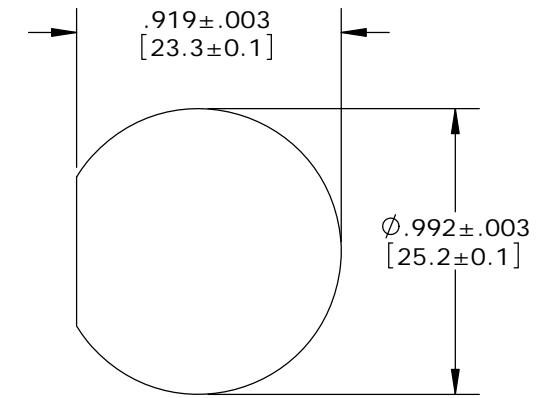
**NOTES:**

1. FINISHED PRODUCT TO BE BOXED.
2. ALL GASKETS AND HEX NUTS MAY BE PACKAGED SEPARATELY.
3. INSTALL CONTACTS INTO CONNECTOR AS SHOWN.
4. REAR WELL FILLED WITH BLACK EPOXY.
5. ALL DIMENSIONS ARE REFERENCE EXCEPT THOSE WITH A TOLERANCE, 6. SEE DRAWING HPMXSTD FOR HOLE PATTERN.

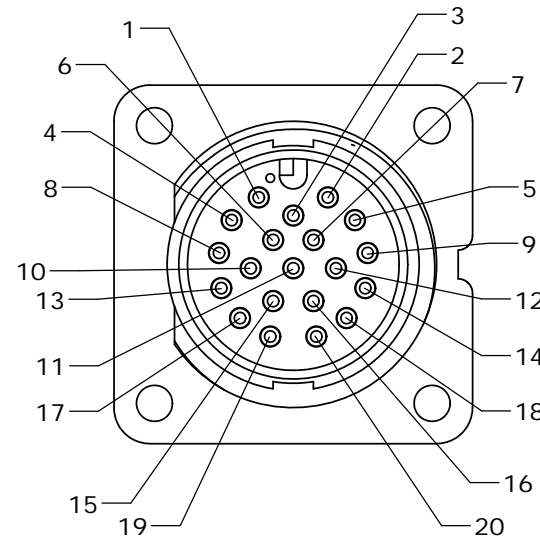
**CUSTOMER APPROVAL**

THIS DOCUMENT CONTAINS CONFIDENTIAL INFORMATION PROPRIETARY TO CONXALL CORPORATION. ANY REPRODUCTION, DISCLOSURE, OR USE OF THIS DOCUMENT / INFORMATION IS EXPRESSLY PROHIBITED UNLESS AUTHORIZED IN WRITING BY CONXALL CORPORATION.

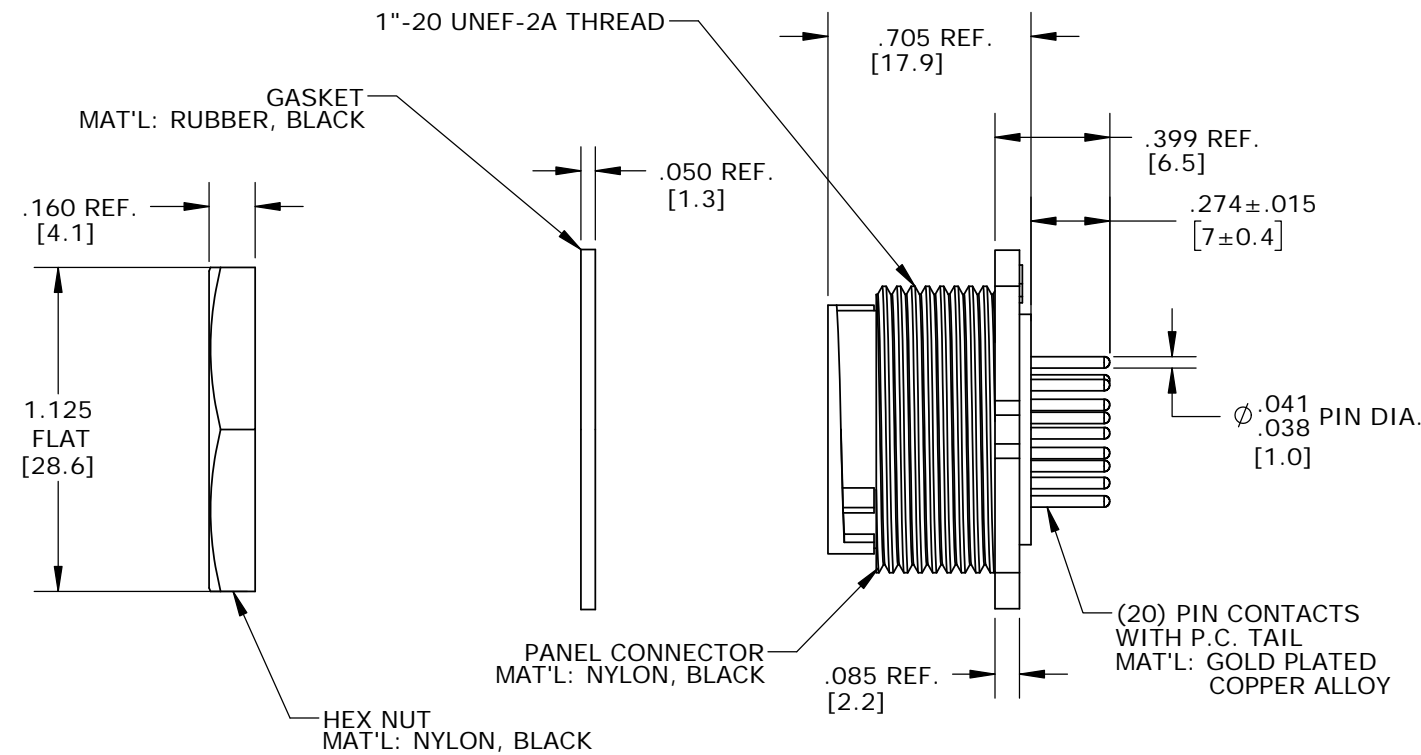
CHECKED BY: \_\_\_\_\_  
 APPROVED BY: \_\_\_\_\_  
 DATE: \_\_\_\_\_



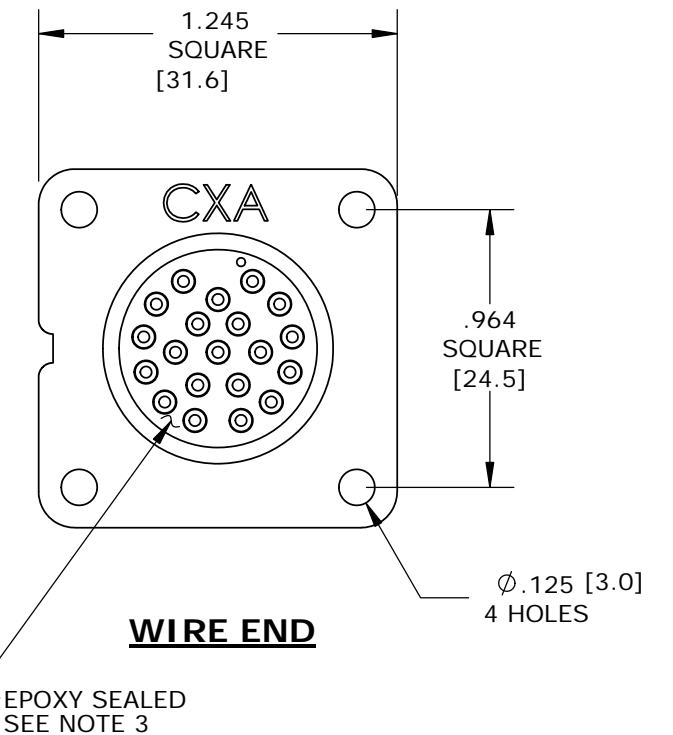
**RECOMMENDED PANEL CUTOUT**



**MATING FACE**



**PC TAIL CONTACT**



**WIRE END**

DIMENSIONS IN BRACKETS [] ARE METRIC

**RoHS COMPLIANT**

A	MA	10-10-17	CREATED DRAWING PER ECR 9203
REV.	INIT.	DATE	DESCRIPTION
	MA	10-10-17	ORIG. DRAWN BY: DATE: MA 10-10-17
ALL INFORMATION ILLUSTRATED IS THE PROPERTY OF "CONXALL CORPORATION". UNAUTHORIZED DUPLICATION OR DISTRIBUTION OF THIS DOCUMENT IS PROHIBITED.			<p>601 E. WILDWOOD VILLA PARK, IL 60181</p>
ALL UNITS ARE IN FEET, INCHES, FRACTION OF INCHES AND DECIMALS.			
APPROVED BY:		TITLE:	
SCALE: NTS		SHEET: 1 OF 1	
SIZE: B		CUSTOMER: STANDARD PRODUCT	
FILE: 14292-20PG-3ES		PART NUMBER: 14292-20PG-3ES	
DIRECTORY: SLW		REV: A	