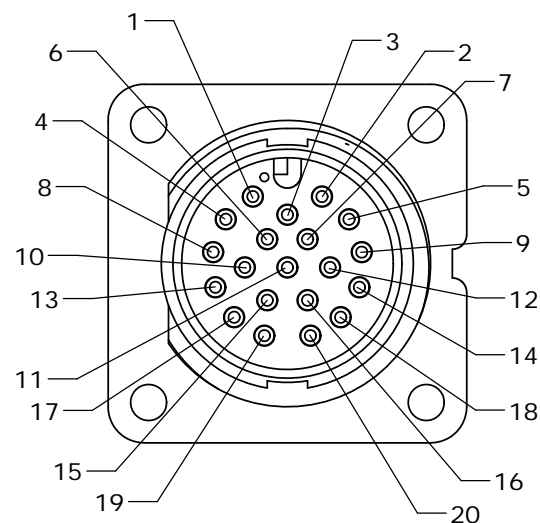
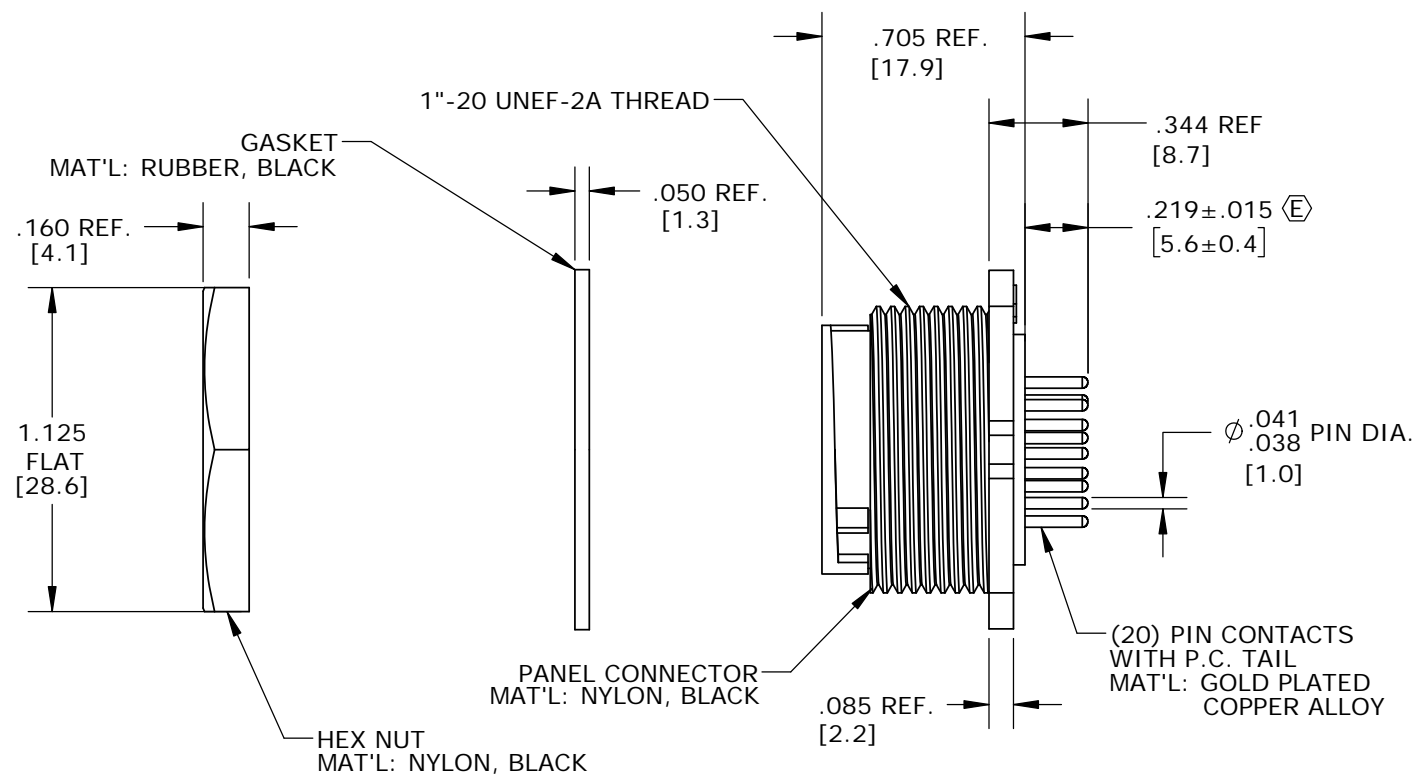


**NOTES:**

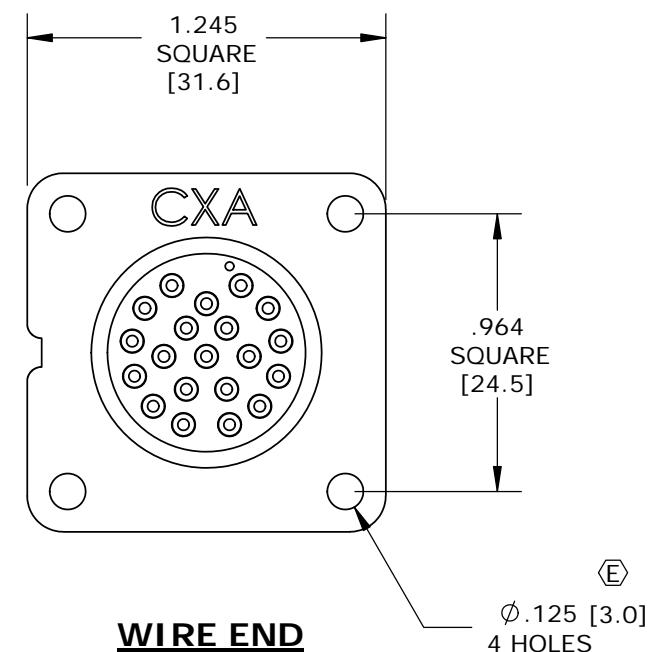
- 1. FINISHED PRODUCT TO BE BOXED. GASKETS AND HEX NUTS MAY BE PACKAGED SEPARATELY.
- 2. INSTALL CONTACTS INTO CONNECTOR AS SHOWN.
- 3. ALL DIMENSIONS ARE REFERENCE EXCEPT THOSE WITH A TOLERANCE.
- 4. SEE DRAWING HPMXSTD FOR HOLE PATTERN.



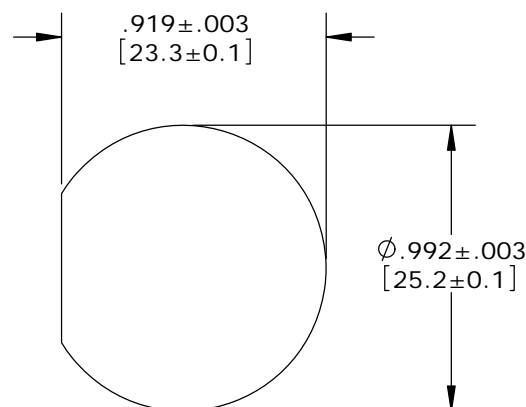
**MATING FACE**



**PC TAIL CONTACT**



**WIRE END**




**RECOMMENDED PANEL CUTOUT**

**RoHS COMPLIANT**

<b>CUSTOMER APPROVAL</b>	
THIS DOCUMENT CONTAINS CONFIDENTIAL INFORMATION PROPRIETARY TO CONXALL CORPORATION. ANY REPRODUCTION, DISCLOSURE, OR USE OF THIS DOCUMENT / INFORMATION IS EXPRESSLY PROHIBITED UNLESS AUTHORIZED IN WRITING BY CONXALL CORPORATION.	
CHECKED BY: _____	APPROVED BY: _____
DATE: _____	

DIMENSIONS IN BRACKETS [] ARE METRIC

E	MA	10-10-17	PKG WAS 100 PCS PER BAG. CONTACT LOCATION WAS .219 ±.010. MTG HOLES WERE Ø.120. SEPARATED FROM FAM DWG PER ECR 9203
D	BZ	01-13-09	REMOVED P/N: 14282-20PG-300, SEE DRAWING 14282-XPG-300 PER ECR 7330
C	AN	07-28-08	UPDATED PER ECR 6905
B	GMC	05-22-08	MODIFIED NOTES 1 & 2 PER ECR 6863
A	RCS	03-08-02	DRAWING CREATED PER DOR 02-4021KZ SUPERSEDES SWG. 14281-20PG-300
REV.	INIT.	DATE	DESCRIPTION
ALL INFORMATION ILLUSTRATED IS THE PROPERTY OF "CONXALL CORPORATION". UNAUTHORIZED DUPLICATION OR DISTRIBUTION OF THIS DOCUMENT IS PROHIBITED.		ORIG. DRAWN BY: RCS	DATE: 02-20-02
ALL UNITS ARE IN FEET, INCHES, FRACTION OF INCHES AND DECIMALS.		CHECKED BY:	
-		APPROVED BY:	
SCALE	SIZE	SHEET	 601 E. WILDWOOD VILLA PARK, IL 60181 TITLE: CONNECTOR ASS'Y KIT 20 POLE, PIN MAXI-CON-X STANDARD PRODUCT
NTS	B	1 OF 1	
FILE:	DIRECTORY:	PART NUMBER:	REV
14291-20PG-300	SLW	14291-20PG-300	E