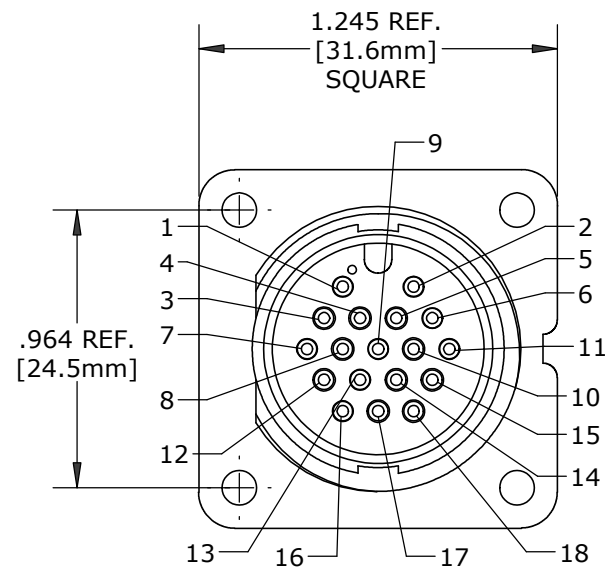
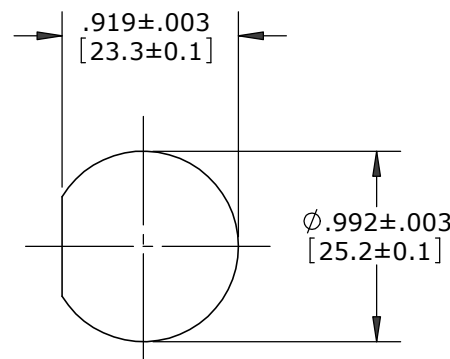


NOTES:

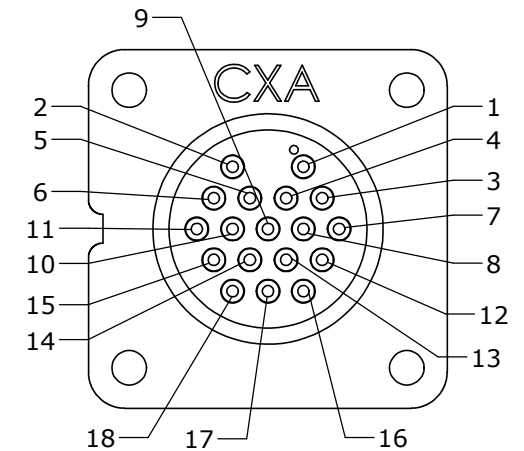
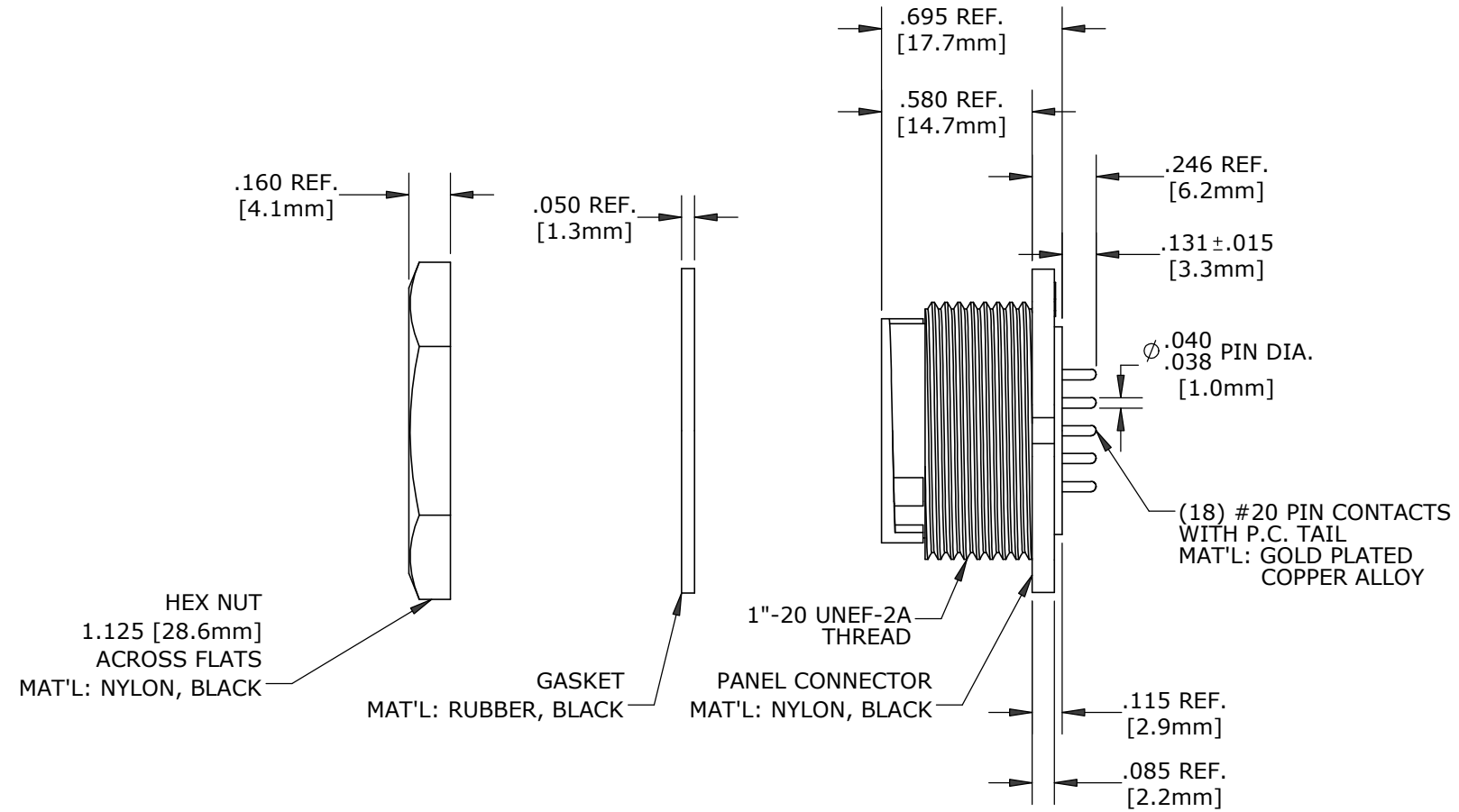
1. FINISHED PRODUCT TO BE BOXED.
GASKETS AND HEX NUTS MAY BE PACKAGED SEPARATELY.
2. CONTACTS ARE INSERTED IN CONNECTOR AS SHOWN.
3. REAR WELL FILLED WITH BLACK EPOXY.
4. ALL DIMENSIONS ARE REFERENCE EXCEPT THOSE WITH A TOLERANCE.
5. SEE DRAWING HPMXSTD FOR HOLE PATTERN



FACE VIEW



RECOMMENDED PANEL CUTOUT



WIRING END

CUSTOMER APPROVAL

THIS DOCUMENT CONTAINS CONFIDENTIAL INFORMATION PROPRIETARY TO CONXALL CORPORATION. ANY REPRODUCTION, DISCLOSURE, OR USE OF THIS DOCUMENT / INFORMATION IS EXPRESSLY PROHIBITED UNLESS AUTHORIZED IN WRITING BY CONXALL CORPORATION.

APPROVED BY: _____

DATE: _____

DIMENSIONS IN BRACKETS [] ARE METRIC

RoHS COMPLIANT

B	SS	06-22-20	CHANGED PACKAGING FROM BAGGED TO BOXED PER ECR 9526
A	MA	10-18-17	DRAWING CREATED PER ECR 9203
REV.	INIT.	DATE	DESCRIPTION
	MA	10-18-17	
<p>ALL INFORMATION ILLUSTRATED IS THE PROPERTY OF CONXALL CORPORATION. UNAUTHORIZED DUPLICATION OR DISTRIBUTION OF THIS DOCUMENT IS PROHIBITED.</p> <p>ALL UNITS ARE IN FEET, INCHES, FRACTION OF INCHES AND DECIMALS.</p> <p>UNLESS OTHERWISE SPECIFIED TOLERANCES: 3 PLACE DECIMALS ±.010 ANGLES ±1° FRACTIONS ±1/16</p> <p>— CRITICAL CHARACTERISTIC FLAG PER SPEC. XXXX</p>			
<p>ORIG. DRAWN BY: MA</p> <p>CHECKED BY:</p>		<p>DATE: 10-18-17</p>	
<p>APPROVED BY:</p>		<p>TITLE: PANEL MOUNT ASSEMBLY (18) #20 PIN CONTACT, PC TAIL MAXI-CON-X</p>	
SCALE	SIZE	SHEET	CUSTOMER:
NTS	B	1 OF 1	STANDARD PRODUCT
FILE:	DIRECTORY:	PART NUMBER:	REV
14281-18PG-3ES	SLW	14281-18PG-3ES	B



601 E. WILDWOOD VILLA PARK, IL 60181