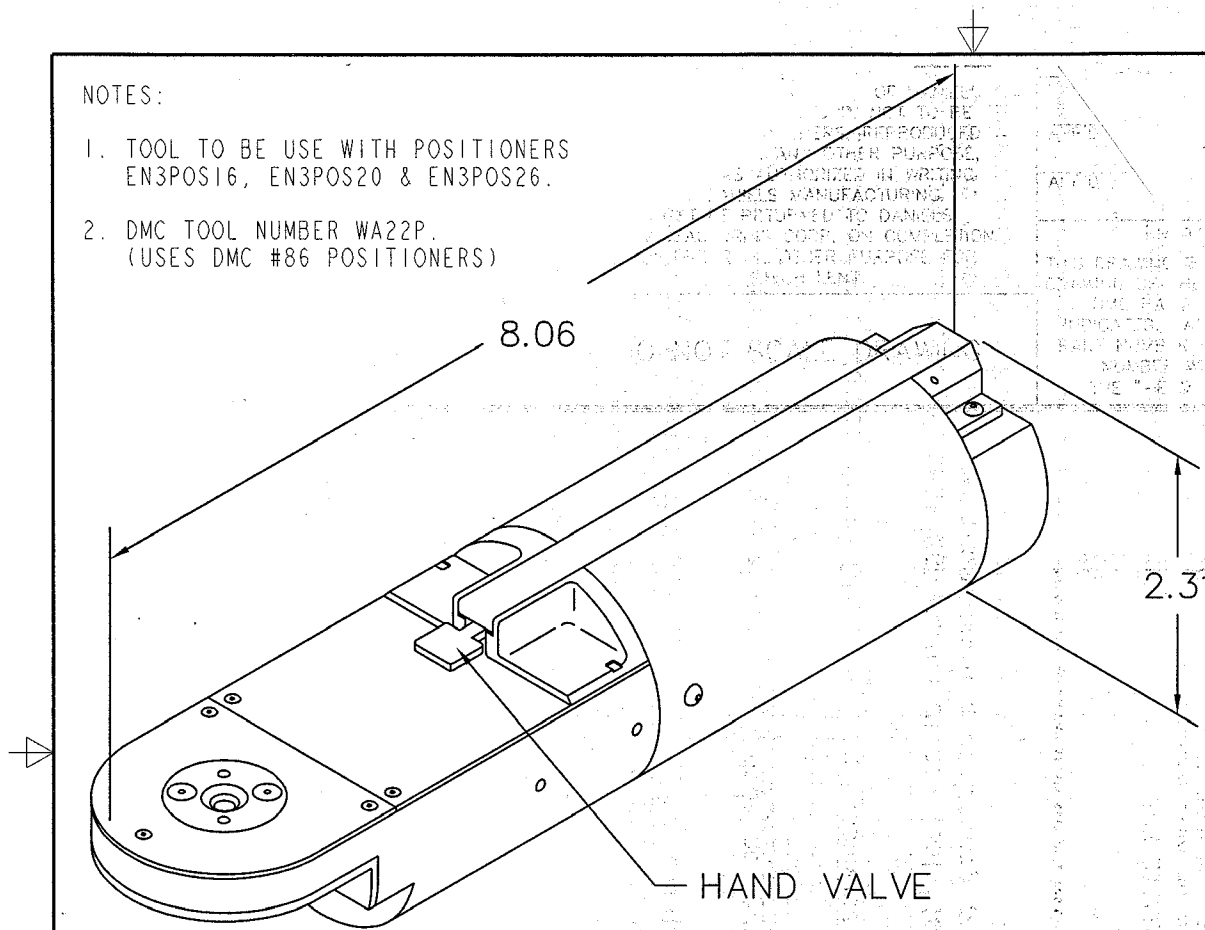


NOTES:

- TOOL TO BE USE WITH POSITIONERS EN3POS16, EN3POS20 & EN3POS26.
- DMC TOOL NUMBER WA22P. (USES DMC #86 POSITIONERS)



GAGING LIMITS OF INDENTERS		
SEL NO	INSPECTION GAGE	
	∅ GO ± .0001	∅ NO-GO ± .0001
1	.0160	.0210
2	.0190	.0240
3	.0220	.0270
4	.0250	.0300
5	.0290	.0340
6	.0330	.0380
7	.0370	.0420
8	.0410	.0460

USE GAGE P/N G145 AT SELECTOR SETTING 8

CUSTOMER DRAWING

<p>★ STAR SYMBOL DENOTES CRITICAL DIMENSION</p> <p>UNLESS OTHERWISE SPECIFIED</p> <p>1. ALL DIMENSIONS IN INCHES - TWO PLACE DECIMALS ±0.01 - THREE PLACE DECIMALS ±0.005 - ANGLES ±1° - ALL DIA. CONCENTRIC WITHIN 0.005 T.I.R.</p> <p>2. FEATURES ON THE SAME CENTERLINE MUST BE ALIGNED WITHIN ±0.002</p> <p>3. REMOVE ALL BURRS</p> <p>DO NOT SCALE DRAWING</p>					<p>THIS DRAWING DESCRIBES A DESIGN CONSIDERED PROPRIETARY IN NATURE, DEVELOPED AND MANUFACTURED BY SWITCHCRAFT INC. AND IS RELEASED ON A CONFIDENTIAL BASIS FOR IDENTIFICATION PURPOSES ONLY.</p>							
<p>SIZE</p>					<p>WIDTH</p>		<p>MULT</p>		<p>LBS/M</p>		<p>TEMPER</p>	
<p>FINISH</p>					<p>MATERIAL</p>							
<p>SPEC No.</p>					<p>SPEC No.</p>							
<p>FIRST USED ON</p>					<p>SCALE</p>							
<p>DATE DRAWN</p>					<p>BY</p>		<p>CHKD</p>		<p>APVD</p>			
<p>15-Dec-09</p>					<p>TJK</p>		<p>TJK</p>		<p>TJK</p>			
<p>12-15-09</p>					<p>12-15-09</p>		<p>12-15-09</p>		<p>12-15-09</p>			
<p>NAME PNEUMATIC CRIMP TOOL FOR #16, #20 & #26 CONTACTS</p>					<p>PART No. EN3CRAUTO</p>					<p>REV B</p>		
<p>REVISIONS</p>					<p>REVISIONS</p>							