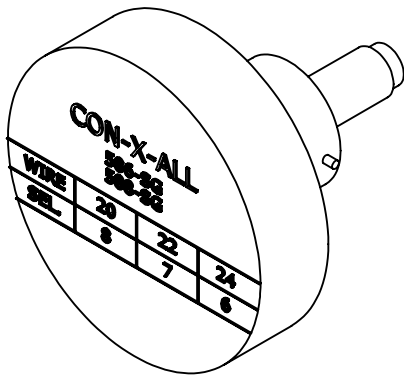
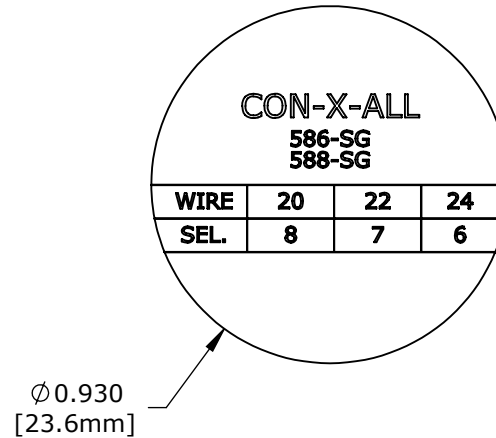
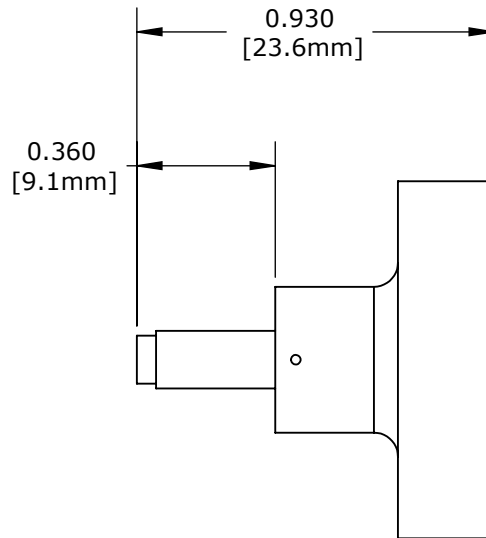


PART NUMBER: 357-122

CUSTOMER PRINT

NOTES:

1. USE WITH CXA TOOL NO.: 359-21
2. ALL DIMENSIONS FOR REFERENCE ONLY



PROPRIETARY

THIS DOCUMENT CONTAINS CONFIDENTIAL INFORMATION PROPRIETARY TO CONXALL CORPORATION. ANY REPRODUCTION, DISCLOSURE, OR USE OF THIS DOCUMENT /INFORMATION IS EXPRESSLY PROHIBITED UNLESS AUTHORIZED IN WRITING BY CONXALL CORPORATION.

DIMENSIONS IN BRACKET [] ARE METRIC.

B	AN	06-15-17	CREATED SHEET PER DOR 17-7819JS	
REV.	INIT.	DATE	DESCRIPTION	
			ORIG. DRAWN BY: BZ DATE: 01-30-09 CHECKED BY:	 601 E. WILDWOOD VILLA PARK, IL 60181
ALL INFORMATION ILLUSTRATED IS THE PROPERTY OF "CONXALL CORPORATION." UNAUTHORIZED DUPLICATION OR DISTRIBUTION OF THIS DOCUMENT IS PROHIBITED.			APPROVED BY:	
ALL UNITS ARE IN FEET, INCHES, FRACTION OF INCHES AND DECIMALS.			SCALE: NTS SIZE: A SHEET: 1 OF 1	CUSTOMER: STANDARD PRODUCT
FRACTIONS ±1/16 = CRITICAL CHARACTERISTIC FLAG PER SPEC. XXXX			FILE: 357-122 DIRECTORY: SLW	PART NUMBER: 357-122
				REV B