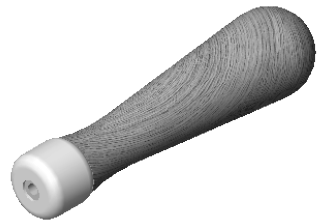
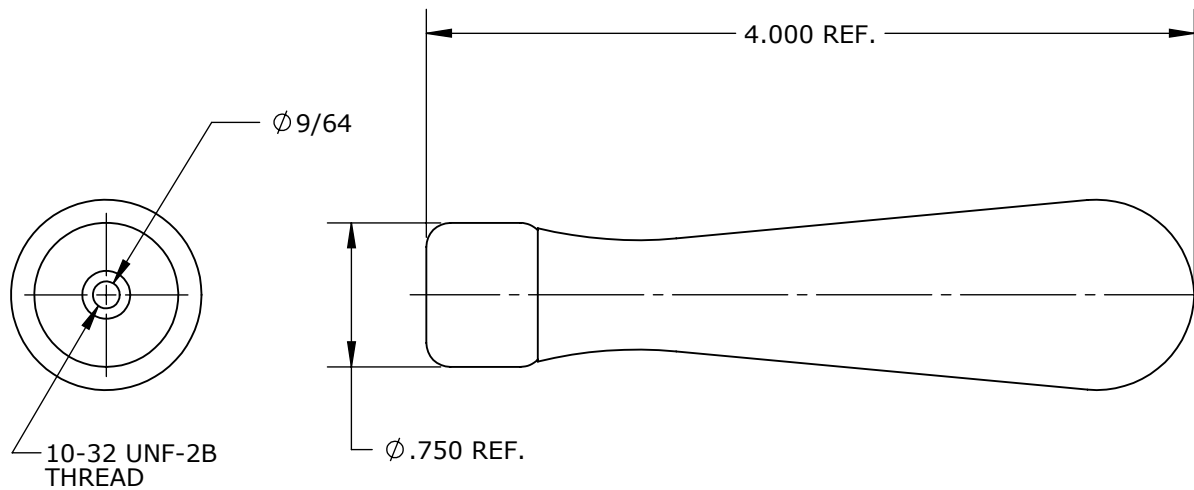


PART NUMBER: 356-1 **CUSTOMER PRINT**

HANDLE	DESCRIPTION	INSERTION BITS	CONTACT SIZES
356-1	SINGLE CONTACT HAND TOOL	356-12	#12
		356-16	#16
		356-20	#20
		356-22	#22 (20 AWG CRIMP BARREL)
		356-22-1	#22 (22 AWG CRIMP BARREL)
		356-26	#26

NOTE:
 1. FILE MOUNTING STYLE: TWIST ON
 2. ALL DIMENSION ARE REFERENCE ONLY



DIMENSIONS IN BRACKET [] ARE METRIC.

PROPRIETARY

THIS DOCUMENT CONTAINS CONFIDENTIAL INFORMATION PROPRIETARY TO CONXALL CORPORATION. ANY REPRODUCTION, DISCLOSURE, OR USE OF THIS DOCUMENT /INFORMATION IS EXPRESSLY PROHIBITED UNLESS AUTHORIZED IN WRITING BY CONXALL CORPORATION.

A	AN	07-06-17	RELEASED PER DOR 17-7819JS		
	JD	02-25-15	DRAWING CREATED PER DOR 15-E149SL(2)		
REV.	INIT.	DATE	DESCRIPTION		
ALL INFORMATION ILLUSTRATED IS THE PROPERTY OF CONXALL CORPORATION. UNAUTHORIZED DUPLICATION OR DISTRIBUTION OF THIS DOCUMENT IS PROHIBITED.		ORIG. DRAWN BY: JD	DATE: 02-25-15		
ALL UNITS ARE IN FEET, INCHES, FRACTION OF INCHES AND DECIMALS.		CHECKED BY:	 601 E. WILDWOOD VILLA PARK, IL 60181		
= CRITICAL CHARACTERISTIC FLAG PER SPEC. XXXX		APPROVED BY:		TITLE: INSERTION HANDLE SINGLE CONTACT HAND TOOL 356 INSERTION BITS	
		SCALE: NTS	SIZE: A	SHEET: 1 OF 1	CUSTOMER: STANDARD PRODUCT
FILE:	356-1	DIRECTORY:	SLW	PART NUMBER: 356-1	REV: A