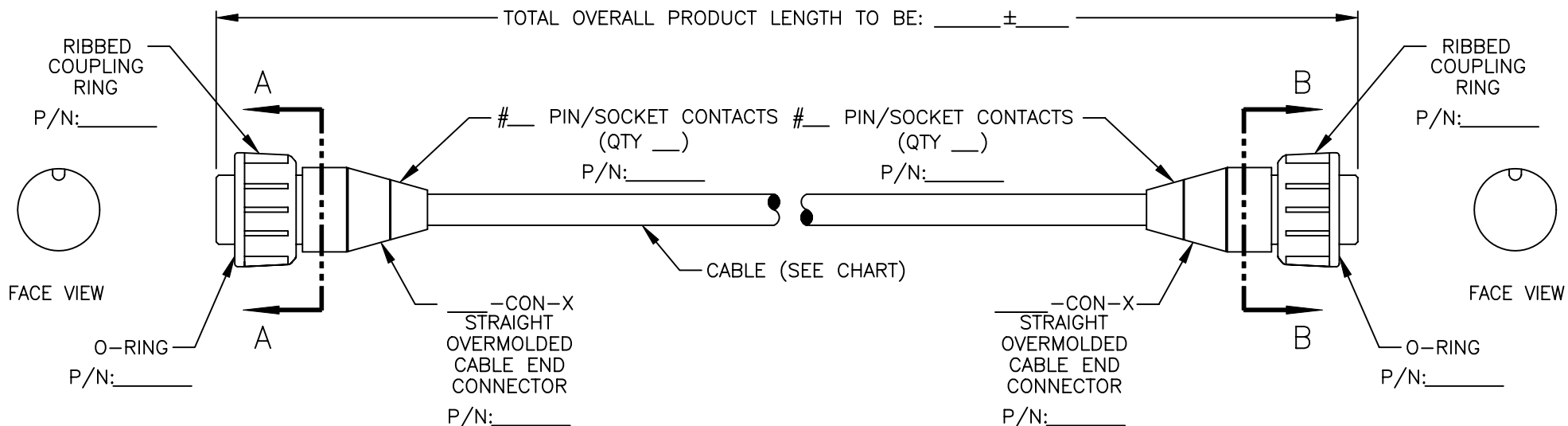


PART NUMBER:

QUOTATION/SAMPLE DRAWING

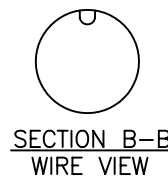
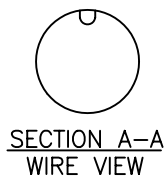
NOTES & SPECIFICATIONS:

1. CABLE CUT LENGTH: _____
2. CABLE TO BE COILED/BUNDLED.
3. CUSTOMER PART NO.: _____ REV. _____



CABLE INFORMATION	
PART NO.:	
CABLE O.D.:	
JKT COLOR:	
JKT MATERIAL:	
STRANDING:	
NO. COND.:	

AGENCY APPROVALS		
TINNED:	CABLE/WIRE	ASSEMBLY
SHIELD:	UL: YES/NO	YES/NO
GAUGE:	CSA: YES/NO	YES/NO
OTHER:	OTHER:	



NOTE:
ALL KEYWAYS ARE SHOWN FOR ORIENTATION REF. ONLY

WIRE COLOR CODE END 'A'									
PIN #1	PIN #2	PIN #3	PIN #4	PIN #5	PIN #6	PIN #7	PIN #8	PIN #9	PIN #10
PIN #11	PIN #12	PIN #13	PIN #14	PIN #15	PIN #16	PIN #17	PIN #18	PIN #19	PIN #20
WIRE COLOR CODE END 'B'									
PIN #1	PIN #2	PIN #3	PIN #4	PIN #5	PIN #6	PIN #7	PIN #8	PIN #9	PIN #10
PIN #11	PIN #12	PIN #13	PIN #14	PIN #15	PIN #16	PIN #17	PIN #18	PIN #19	PIN #20

DO NOT SCALE PRINT	REV. _____	DATE _____	DESCRIPTION _____	INIT. _____
NOTICE - All information illustrated or revealed on this document is proprietary, and is the exclusive property of the CONXALL CORPORATION. Unauthorized duplication or distribution of the information contained in this document is prohibited.	DRAWN BY: _____ DATE: _____		 601 E. WILDWOOD VILLA PARK, IL 60181 TITLE: _____	
	CHECKED BY: _____			
APPROVED BY: _____				
UNLESS OTHERWISE SPECIFIED ALL UNITS ARE IN FEET, INCHES, AND FRACTIONS OF INCHES.	SCALE _____	SIZE _____	SHEET _____	CUSTOMER: _____
	NTS	A	1 OF 1	
FILE: QUOTE5	DISK: CP12		PART NUMBER: _____	REV. X1