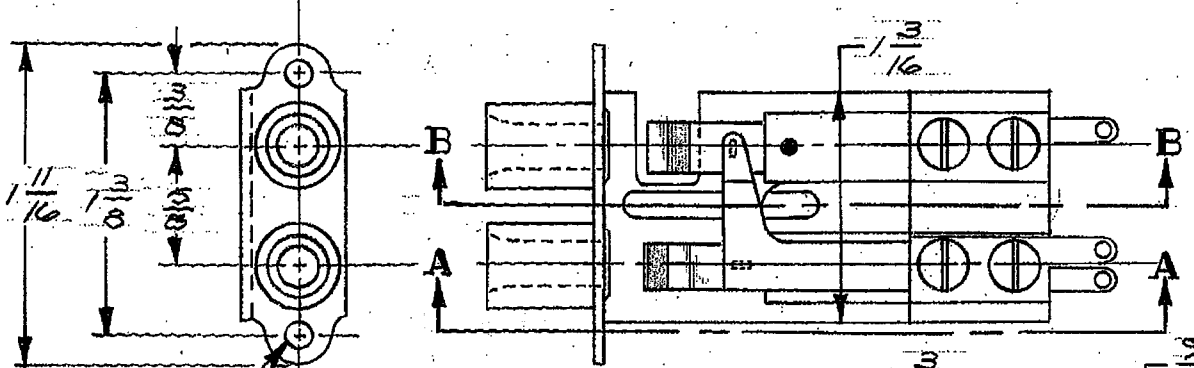


SCHEMATIC CIRCUIT



SPECIFICATIONS:

1. FRAME AND SPRING SUPPORTS: STEEL-IRID. IRIDITE FINISH.
2. BUSHINGS: BRASS-NICKEL PLATED.
3. SPRINGS: NICKEL SILVER-SPRING TEMPERED.
4. CONTACTS: CROSS BAR PALLADIUM.
5. SPACERS: XXXP PAPER BASE PHENOLIC.
6. LIFTERS: NYLON FABRIC.

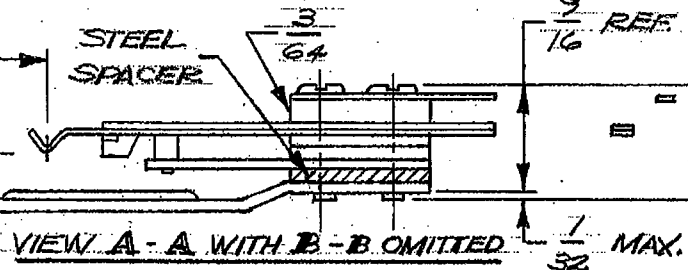
5/32 DIA.  
(2 HOLES)

1/4 DIA.

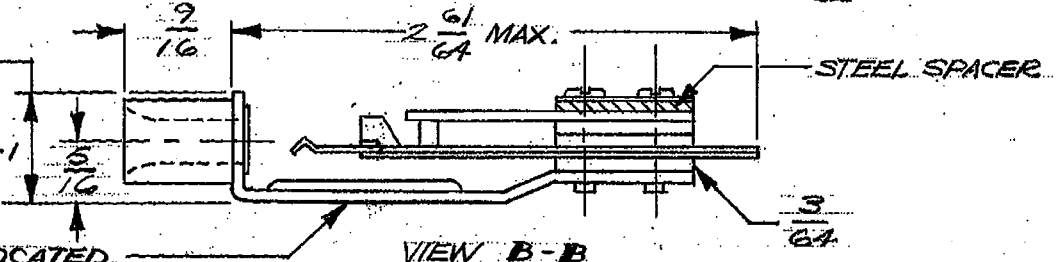
9/16 MAX.

PART NO. MG41/11-1

IN 1/16" HIGH CHARACTERS, CENTRALLY LOCATED.



VIEW A-A WITH B-B OMITTED



VIEW B-B

CUSTOMER DRAWING

THIS DRAWING DESCRIBES A DESIGN CONSIDERED PROPRIETARY IN NATURE, DEVELOPED AND MANUFACTURED BY SWITCHCRAFT, INC., AND IS RELEASED ON A CONFIDENTIAL BASIS FOR IDENTIFICATION PURPOSE ONLY.

- UNLESS OTHERWISE SPECIFIED:
- 1- DECIMAL DIMENSIONS ± .005
  - 2- FRACTIONAL DIMENSIONS ± 1/64
  - 3- ANGLES ± 1/2°
  - 4- ALL DIA'S CONCENTRIC WITHIN .005 T.I.R.
  - 5- ALL DIMENSIONS IN INCHES
  - 6- FOR THREADS USE UNIFIED PLUG AND RING GAGES ONLY.
  - 7- REMOVE ALL BURRS.
  - 8- PART TO BE FABRICATED AS SPECIFIED. MAKE NO DIMENSIONAL ALLOWANCES FOR APPLIED FINISHES, I.E., PLATING, PAINTING, ETC.
  - 9- HOLES ON SAME CENTERLINE MUST BE ALIGNED WITHIN ± .002

DO NOT SCALE DRAWING

DRAWN BY <b>B.</b>	DATE <b>25 Jan 1966</b>
CHECKED BY	DATE
APPROVED BY <b>K. JAK</b>	DATE <b>2-1-76</b>
SCALE <b>FULL</b>	
FIRST USED ON <b>MG41/11-1</b>	
NAME <b>TWIN JACK</b>	
<b>MG41/11-1</b>	

FINISH <b>MIL-J-641</b>
PER FINISH SPEC. NO.
MATERIAL <b>PER MIL-J-641</b>
PER MAT. SPEC. NO.
<b>SWITCHCRAFT</b>
PART NO. <b>MT 388</b>
ISSUE <b>A</b>
SHEET OF

ISS	SYM	REVISION	BY	DATE
5	A	18069	B	25 Jan 1966
			B	27 July 1975
			B	10 67

ROUTING



PANTON 67 68