

2 CONDUCTOR PARALLEL CABLE
 20 (26 x 34) AWG
 0.100 X 0.185 O.D. (REF)
 PVC, BLACK

ST-765

BLACK

WIRING

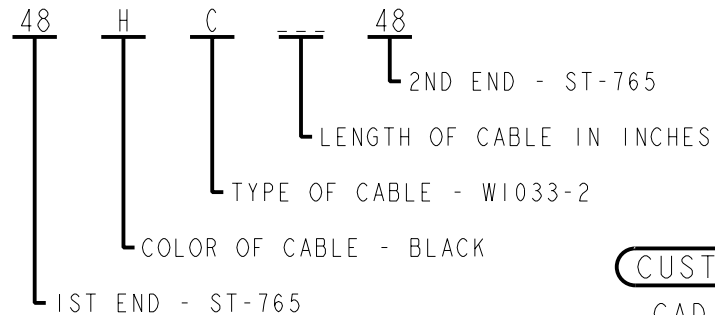
TIP - TIP
 SLEEVE - SLEEVE

ST-765

BLACK

MATERIALS:

- CONTACT PIN - BRASS, SILVER PLATED
- SLEEVE - BRASS, NICKEL PLATED
- INSULATORS - REINFORCED NYLON
- OVERMOLDING - CAB, BLACK



CUSTOMER DRAWING

CAD/CAM DWG. NO.

48HC07948_CD

SHEET 1 OF 1

NOTES:

ALL DIMENSIONS ARE REFERENCE.

★ STAR SYMBOL DENOTES CRITICAL DIMENSION, SEE S/C ENGINEERING STANDARD ES-0001

THIS DRAWING DESCRIBES A DESIGN CONSIDERED PROPRIETARY IN NATURE, DEVELOPED AND MANUFACTURED BY SWITCHCRAFT INC. AND IS RELEASED ON A CONFIDENTIAL BASIS FOR IDENTIFICATION PURPOSE ONLY.

					UNLESS OTHERWISE SPECIFIED				SIZE	WIDTH	MULT	LBS./M	TEMPER			
					1. ALL DIMENSIONS IN INCHES TWO PLACE DECIMAL ±.01 THREE PLACE DECIMAL ±.005 ANGLES ±0.5° ALL DIA'S CONCENTRIC WITHIN .005 T.I.R. 2. REMOVE ALL BURRS 3. MAKE NO DIMENSIONAL ALLOWANCES FOR APPLIED FINISHES, I.E., PLATING, PAINTING, ETC. 4. HOLES ON THE SAME CENTERLINE MUST BE ALIGNED WITHIN ±.002				FINISH				MATERIAL			
									SPEC. NO.				SPEC. NO.			
									FIRST USED ON				SCALE 1:1			
B	ECO #23246	5-11-00	JL	DG					DATE DRAWN	BY	CHK'D	APP'D				
A	FIRST DRAWN ECO #20700	2-6-96	RC	RB					2-6-96	RC	RB 2-6-96	KS 2-6-96				
ISSUE	CHANGE NO.	DATE	BY	APP'D					NAME				PART NO.			
REVISIONS					DO NOT SCALE DRAWING				CABLE ASSEMBLY ST-765 TO ST-765				48HC _ _ _ 48			
													ISSUE B			