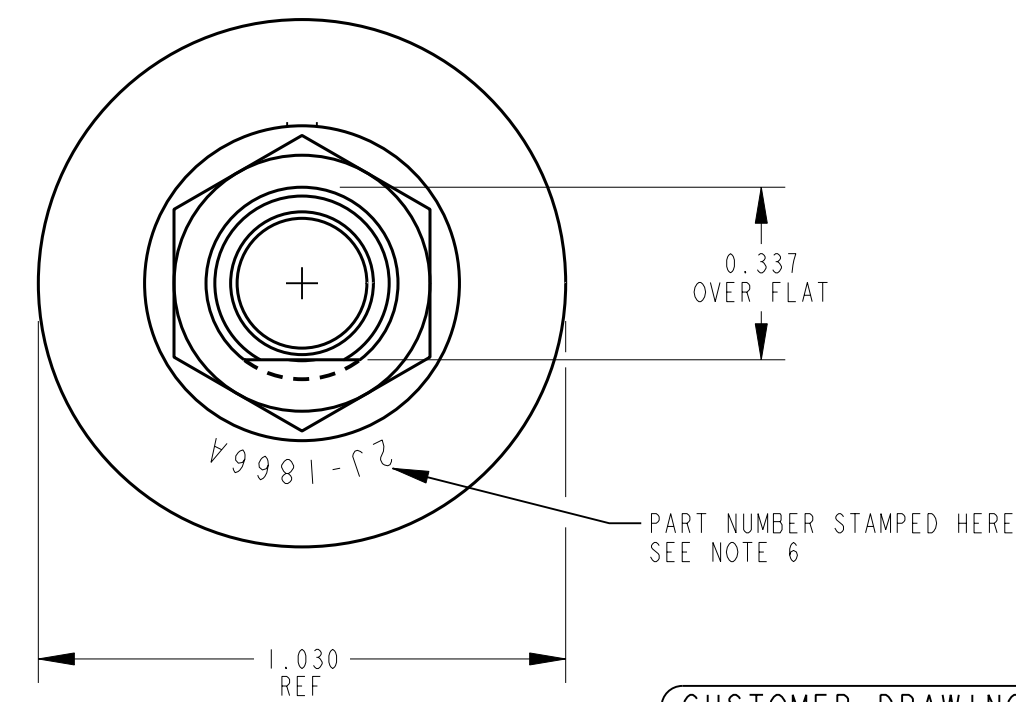
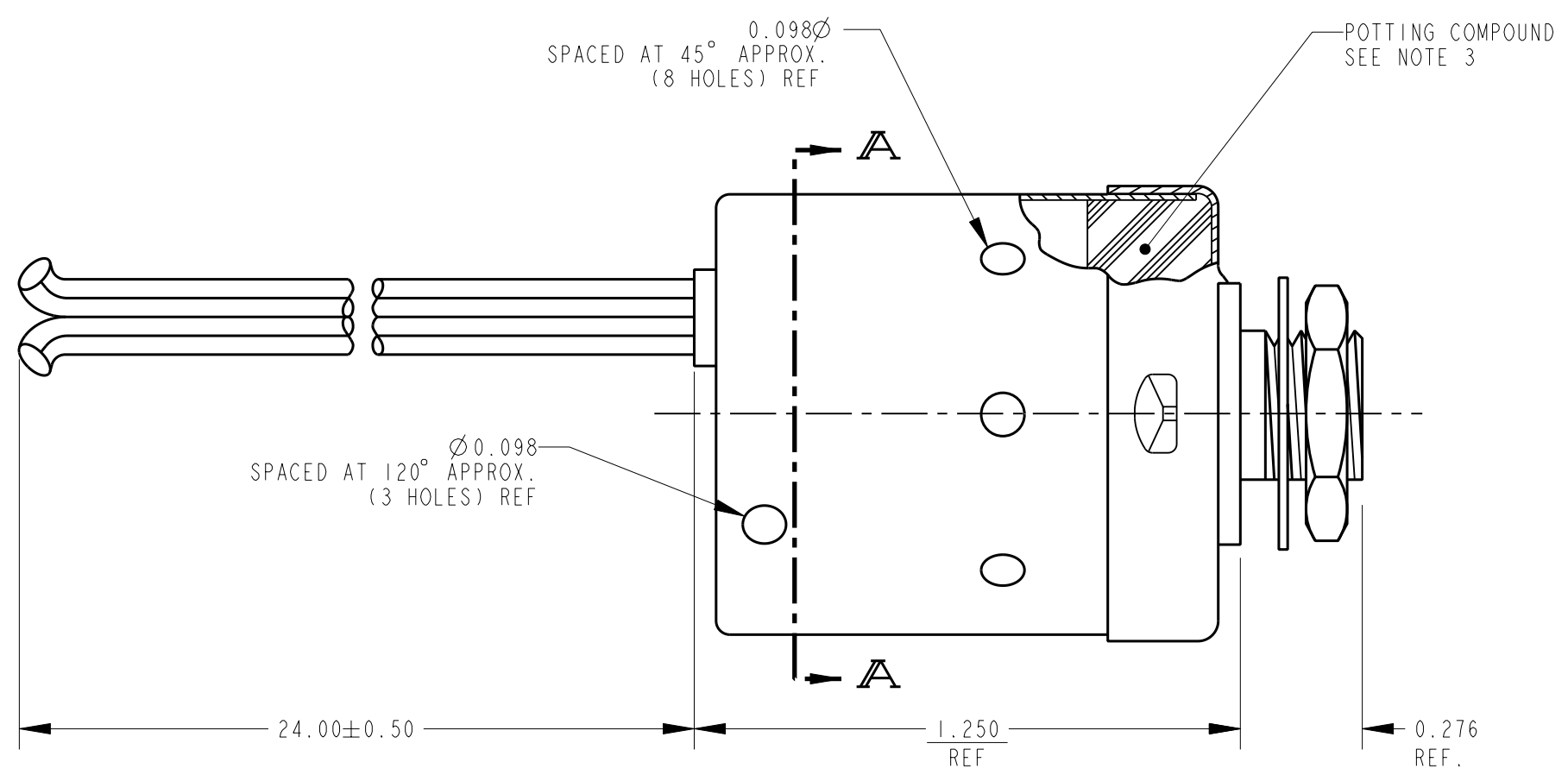
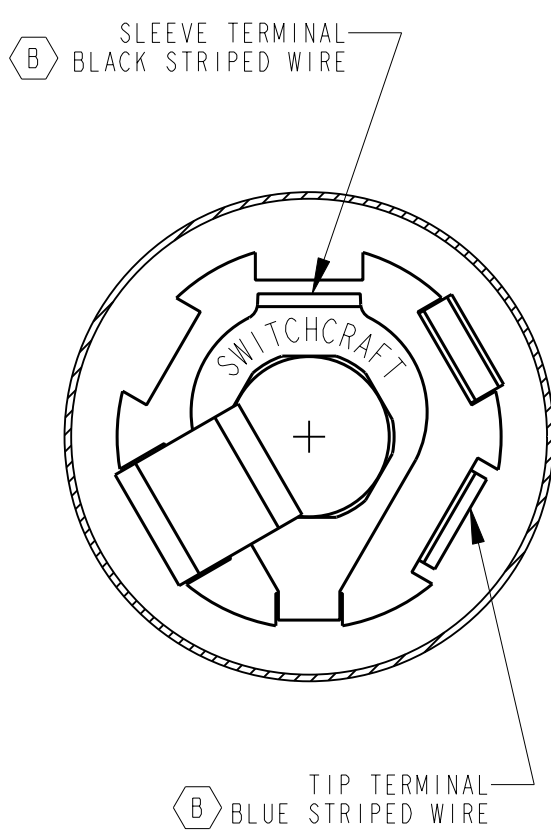
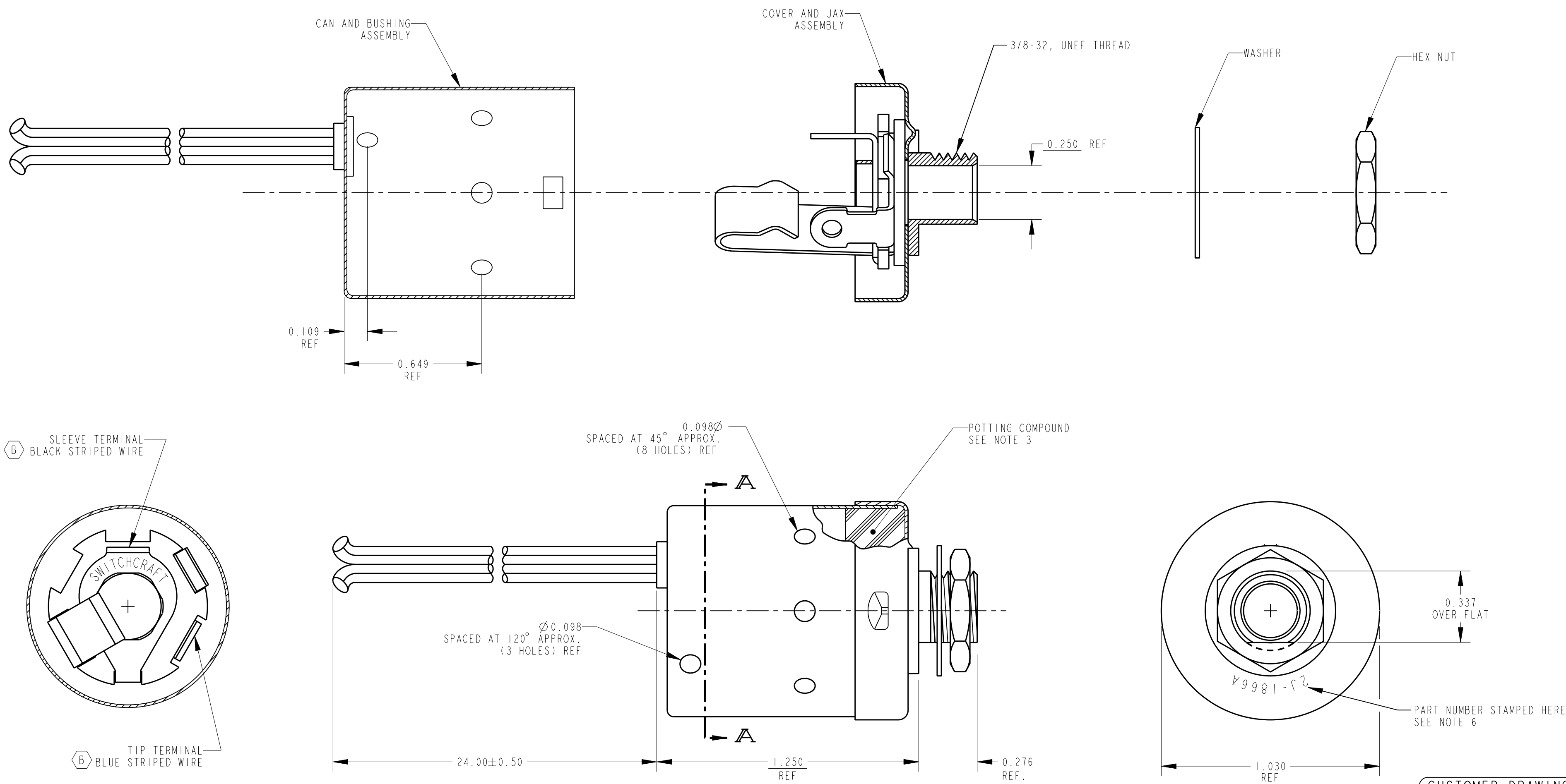


NOTES:

- MATES WITH SWITCHCRAFT® NO.440 PLUG.
- COVER IS PERMANENTLY SECURED TO CAN AFTER FINAL ASSEMBLY.
- JACK INSULATORS ARE COMPLETELY ENCASED IN DOW CORNING RTV 3110 POTTING COMPOUND.
- LEAD WIRE IS MIL-W-22759/34, 20 AWG.
- SOLDERED WIRE CONNECTIONS AND JACK TERMINALS ARE FULLY INSULATED WITH PVC HEAT SHRINK SLEEVES.
- MAINTAIN PART NUMBER WITH DASH AS SHOWN ON BOM, DRAWING, AND SHIPPING BARCODE LABEL.



CUSTOMER DRAWING

SECTION A-A  
WIRING DESIGNATIONS

CUSTOMER: BOEING COMMERCIAL AIRPLANES

REV	ECO NUMBER	DATE	BY	APVD
B	27536	7-08-15	PC	TJK
A	25376	7-28-06	JEB	TJK

★ STAR SYMBOL DENOTES CRITICAL DIMENSION

UNLESS OTHERWISE SPECIFIED

- ALL DIMENSIONS IN INCHES  
- TWO PLACE DECIMALS ±0.01  
- THREE PLACE DECIMALS ±0.005  
- ANGLES ±1°  
- ALL DIA. CONCENTRIC WITHIN 0.005 T.I.R.
- FEATURES ON THE SAME CENTERLINE MUST BE ALIGNED WITHIN ±0.002
- REMOVE ALL BURRS

DO NOT SCALE DRAWING

THIS DRAWING DESCRIBES A DESIGN CONSIDERED PROPRIETARY IN NATURE, DEVELOPED AND MANUFACTURED BY SWITCHCRAFT INC. AND IS RELEASED ON A CONFIDENTIAL BASIS FOR IDENTIFICATION PURPOSES ONLY.				
SIZE	WIDTH	MULT	LBS/M	TEMPER
FINISH SPEC No.		MATERIAL SPEC No.		
FIRST USED ON		SCALE I = 0.375		
DATE DRAWN	BY	CHKD	APVD	<b>Switchcraft®</b>
20-Aug-09	JEB	08-20-09	08-24-09	
NAME SHIELDED "LITTEL JAX" ASSEMBLY			PART No. 2J-1866A	REV B