



**Switchcraft<sup>®</sup>**  
**Pro Audio**

# Switchcraft®

## Jacks & Plugs:

In 1946, Switchcraft®, located in Chicago, IL, started designing and manufacturing premium quality jacks and plugs for the rapidly expanding electronics industry. We quickly became the industry standard for audio interconnect. Our #11 commercial 1/4" jack and our #280 commercial 1/4" plug were developed early in the company's history and are still sold by the millions today. What started as a few high quality products has developed into the world's largest offering of premium jacks and plugs.



## Patchbays:

Early in the telecommunications industry, telephone operators needed an easy way to physically patch phone calls from one location to another. Switchcraft's 1/4" long frame patchbays became the name in reliability. Our reputation for quality made us the number one choice for signal routing in recording studios, broadcast facilities and other audio systems. Eventually, it became apparent that what worked for audio patching could also be used for video. Today, Switchcraft's VPP, MVP and MMVP Micro Video Patchbays are used to patch high definition video signals in the world's largest broadcast facilities and mobile production units.



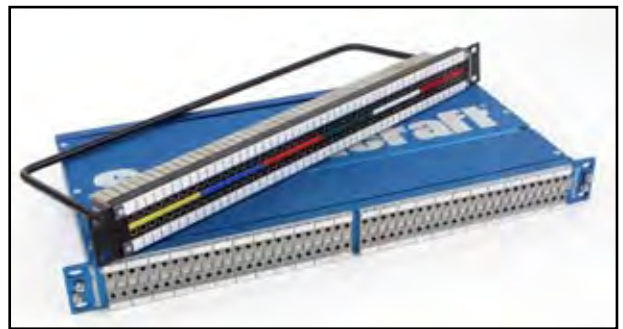
## Cable Assemblies:

Audio and video systems are only as good as the cable assemblies that link them together. At Switchcraft, we pride ourselves on producing the highest quality cable assemblies in the industry. This includes a wide range of patchcords, snakes and DB25 breakout cables compatible with our products and other industry standard protocols. Many of our cable assemblies and patchcords meet strict military specifications.



## Connectors:

In the 1960's, the explosion of large format concerts and events made audio systems more complex than ever. Microphone and PA system manufacturers adopted what is now known as the XLR connector. Switchcraft's A3F and A3M connectors became the industry standard and are used everywhere from rock concerts to presidential addresses. The XLR has remained the industry standard in audio, and we've continued to improve upon this time tested design. The AAA Series is our newest addition used around the world by manufacturers, systems integrators and audio engineers alike.



## DI Boxes, Mic Splitters and Accessories:

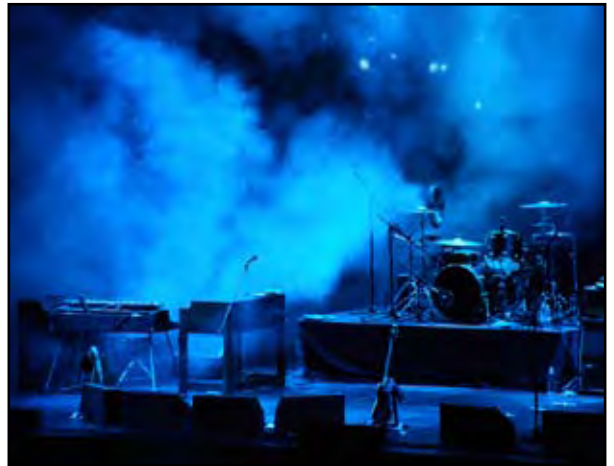
The newest line of Switchcraft products are based on our long history of manufacturing high quality interconnect solutions for audio, video and data systems. Utilizing our own jacks and connectors as the framework, we've added the latest innovation in design and technology to create the next generation of direct boxes, mic splitters, I/O panels and other peripheral products. Our 900 Series direct box with Phantom Lift (patent pending), is the world's only direct box with phantom power controlled ground lift.



# Applications

## Live Sound

Switchcraft® offers a wide range of professional products for live sound applications. This includes a full line of high end direct boxes, featuring our brand new 900 Series with Phantom Lift (patent pending). Our RMAS line of mic splitters help provide accurate distribution of audio signals to FOH, monitor and recording consoles. All of our splitters can be ordered with dual isolated Jensen transformers providing the ultimate protection from ground loops in the most critical live sound applications. Of course, we're still the leading manufacturer of premium audio connectors used in live sound applications around the world.



## Recording

Professional recording engineers everywhere have come to recognize the StudioPatch® 9625 as the most dependable and flexible audio patchbay available. With EZ Norm technology, the ability to change signal flow from the front of each channel with the flip of a switch makes adding and reconfiguring gear a snap. Our PT Series I/O panels are a perfect solution for anyone requiring front-of-rack access to outboard gear and recording consoles. All of our breakout cables feature Switchcraft® all metal XLR and 1/4" ends, and premium double-shielded multi-pair cabling making them the most trusted in the industry.

## Broadcast

Today's high definition broadcast facilities require the most technologically advanced equipment to ensure high quality distribution of audio and video signals. The MMVP Micro Video Patchbay offers the highest level of density (96 patchpoints in 1RU) while exceeding SMPTE 424M specifications. Our flagship audio patchbay, the EZ Norm Series, enables signal flow to be changed from the front of each channel using a standard screwdriver. We also offer a broad line of patchbay accessory products, including fully molded patchcords, insertion/withdrawal tools, terminating/looping plugs and adapters.



## Systems Integration

Switchcraft® offers the most comprehensive range of audio, video and data interconnect solutions for systems integration and installation in houses of worship, educational/corporate facilities, stadiums and other venues. The EH Series is a line of panel mount connectors and rack panels for integrating audio, video and data signals. AAA XLR connectors feature an all metal, two piece design, making them the most durable and fastest to assemble XLR connectors in the world! Our broad line of audio and video patchbays are also widely recognized throughout the systems integration/installation industry.



# Switchcraft® Pro Audio

## JACKS & PLUGS

## CABLE ASSEMBLIES

### 3.5mm (1/8" Mini) Jacks & Plugs



### Other Jacks & Plugs



### DB25 Breakout Cables and 8-Channel Snakes



### Audio & Video Patchcords



Applications

Professional 3.5mm products for MP3 players, headphones, wireless microphone systems and other pro audio / video gear

High quality 1/4" commercial, 1/4" long frame, phono and Bantam/TT jacks and plugs for musical instruments, audio patching and other pro audio gear

Multi-channel interconnect solutions for pro audio gear including patchbays, splitter systems, stage boxes, I/O panels, etc.

Premium audio and video patchcords for broadcast and pro audio

Features / Benefits

- Rugged all metal construction
- Heavy duty cable clamp
- Plugs feature a one piece tip rod which means the plug tip will always stay attached to the plug body and will never break off in your equipment
- Large solder terminals for easy termination

- Rugged all metal construction
- Heavy duty cable clamp
- 1/4" plugs feature a one piece tip rod which means the plug tip will always stay attached to the plug body and will never break off in your equipment
- Large solder terminals for easy termination
- Phono solid center pin

- Rugged all metal Switchcraft® connectors
- 10 ft. standard cable length with 18 inch fanouts
- 110 Ohm cable for analog or AES/EBU digital audio
- Double shielded multi-pair cabling
- 4-40 and M3 jackscrews included on all DB25 connectors
- Yamaha and TASCAM DTRS pinouts (DB25)

- Durable, overmolded plugs
- 110 Ohm cabling for analog or AES/EBU digital audio
- 75 Ohm low capacitance cabling for HD video
- Plugs made of nickel plated copper alloy won't tarnish or need polishing
- High quality Switchcraft® plug ends

Options

- Black or nickel plated housing/handles
- Gold or nickel plated (plug)
- Straight or right angle (plug)
- Locking or non-locking (plug)
- Large cable opening
- Cable mount extension jack

- Metal or plastic handles
- Solder or screw terminals
- Large cable opening
- Cable mount extension jack
- Straight or right angle (plug)
- Two or three conductor (TS or TRS)
- Brass or nickel plated (1/4" or TT/Bantam)
- Black or nickel plated housing/handles (phono)
- Gold or nickel plated (phono)

#### DB25 Breakout Cables:

- DB25 to DB25, XLR or 1/4" TRS
- Eight Channel DB25 Insert Cable - dual DB25 to eight 1/4" TRS

#### DB25 Modular Cable Ends:

- Female DB25 to XLR or 1/4" TRS

#### 8-Channel Audio Snakes:

- XLR, 1/4" TS, 1/4" TRS (plug or extension jack) and phono
- Black finish / gold plated contacts (XLR and phono)

- Wide variety of cable colors
- Available in standard lengths of 1-10 ft.
- Dual Bantam/TT available for RS422 and stereo patching (stereo spaced TT patchbays only)

# PATCHBAYS

## MMVP Micro Video Patchbays



High density, 2x48 video patchbays meet SMPTE 424M specifications for HD video patching in broadcast, mobile production, post production, etc.

- Meets SMPTE 424M specifications for HD video
- Rated at 3GHz
- Utilizes industry standard DIN 1.0/2.3 input/output connections
- Screw in, all metal jack design withstands vibration in mobile applications
- Based on the proven, reliable, patented technology of our MVJ Series of HD video jacks
- Cable tie bar for easy cable management
- Snap in designation strips
- Rated to 20,000 insertion / withdrawal cycles

- 1RU, 1.5RU and 2RU rack heights
- Normalled, non-normalled, terminated and non-terminated
- Color coding system for easy channel identification
- Available with red frame to distinguish AES/EBU digital audio from HD video
- Accessories include DIN 1.0/2.3 insertion / withdrawal tool and DIN 1.0/2.3 cable mount connectors for all popular video cable types

## Standard & MidSize Video Patchbays



Standard WECO (2x24 or 2x26) and MidSize WECO (2x32 or 2x34) video patchbays meet SMPTE 424M specifications for HD video patching in broadcast, mobile production, post production, etc.

- Meets SMPTE 424M specifications for HD video
- Rated at 3GHz
- Utilizes industry standard true 75 Ohm BNC input/output connections
- Screw in, all metal jack design withstands vibration in mobile applications
- Proven, patented design (MVJ- midsize video jack)
- Cable tie bar for easy cable management
- Snap in designation strips
- Rated to 30,000 insertion / withdrawal cycles

- 1RU, 1.5RU and 2RU rack heights
- Normalled, non-normalled, terminated and non-terminated
- Accessories include true 75 Ohm cable mount BNC connectors for all popular video cable types
- Single video jacks, looping plugs and dummy plugs

## EZ Norm TT Patchbays



Broadcast, mobile production and other pro audio applications

- Utilizes EZ Norm technology, allowing signal flow to be changed from full, to half, to non-normal from the front of each channel using a standard screwdriver
- Jacks rated at 30,000 insertion/withdrawal cycles
- 110 Ohm compatible, perfect for analog or AES/EBU digital audio
- Nickel plated brass bushings improve reliability and conductivity
- Gold switching contacts improve conductivity
- Snap in designation strips

- 1RU, 1.5RU and 2RU rack heights
- Grounds switchable from vertically strapped to isolated by channel (3-pin or PPT Punchdown)
- Available with cable harness, connecting front and rear panel
- Back panel options include 3-pin, PPT Punchdown, EDAC, DB25 and solder terminal
- Solder terminal versions feature cable tie bar or cable tray

## StudioPatch® Series TT Patchbays



Professional, mobile and independent recording studios

- Utilizes EZ Norm technology, allowing signal flow to be changed from full, to half, to non-normal from the front of each channel using a standard screwdriver
- Jacks rated at 30,000 insertion/withdrawal cycles
- 110 Ohm compatible, perfect for analog or AES/EBU digital audio
- Gold switching contacts improve conductivity
- Terminates to DB25 connectors wired to the TASCAM DTRS pinout
- Grounds switchable from vertically strapped to isolated
- Snap in designation strips

- 1625 - Modular, 16 point (8 channel)
- 6425 - 1 RU rack mount, 64 point (32 channel)
- 9625 - 1 RU rack mount, 96 point (48 channel)

## Audio Patchbays (Wired and Unwired)



Broadcast, mobile production and other pro audio applications

- 110 Ohm compatible, perfect for analog or AES/EBU digital audio
- Nickel plated steel frame jacks improve reliability and conductivity
- Jacks rated at 30,000 insertion/withdrawal cycles
- Gold switching contacts improve conductivity
- Snap in designation strips
- Cable tie bar

- 1RU, 1.5RU and 2RU rack heights
- 1/4" long frame or TT/Bantam jacks
- Custom pre-wired options available
- Available with cable harness connecting front and rear panel
- Back panel options include 3-pin, PPT Punchdown, EDAC and solder terminal
- Solder terminal versions feature cable tie bar or cable tray

# CONNECTORS

## Audio, Video and Data Connectors (EH Series)



Extensive line of panel mount audio, video and data connectors used to create custom I/O panels and wall plates for A/V, pro audio, broadcast, mobile production and post production installations

- The easiest way to create custom I/O panels and wall plates
- Compatible with Switchcraft® QGPK rack panels and WP Series wall plates
- All connectors fit into a standard size XLR panel cutout
- Available in black or nickel finish
- Custom combinations of EH Series connectors can be quickly loaded into any of our 1 RU (1x16), 1.5 RU (1x16) or 2 RU (2x16) QGPK Series panels
- Available individually bagged with mounting screws

- XLR, Phono & BNC
- 9 & 15-Pin DSUB
- S-Video & PS/2
- Firewire 400 & 800
- USB
- TOSLINK
- F Type
- LC, SC, ST Fiber Optic
- 3.5mm (1/8" mini)
- DPDT Switches
- CAT5e / CAT6

## XLR Connectors (Q-G®)



Professional XLR products for microphone cables, snakes, I/O panels and other pro audio gear

- Recognized as the industry standard
- Rugged design and high quality material
- Two piece design with integral strain relief (AAA series)
- Large solder terminals for easy termination
- Thermoplastic pin insert withstands high temperature soldering
- Male and female panel mount fit into the same cutout (E Series)
- Unsurpassed durability with a choice of finishes and contact plating
- Female connectors have latch lock feature to hold connectors firmly together

- 3-7 contacts (3-5 for E Series)
- Gold or nickel plated contacts
- Black plastic handle available (AAA Series)
- Large cable opening
- Right angle (R Series)
- Satin or textured finish (D Series panel mount)
- Black or nickel finish

## Mini XLR Connectors (Tini "QG"®)



Professional Mini XLR products for wireless microphone systems and other pro audio gear

- Easy to assemble
- Easy quick release
- Unsurpassed durability with a choice of finishes and contact plating
- Rugged design and high quality material
- Female connectors have latch lock feature to hold connectors firmly together
- All metal Tini "QG"® available

- Black or nickel plated handles
- Gold or nickel plated contacts
- Large cable opening
- 3-8 contacts
- Available in solder terminal panel mount, or right angle PC panel mount
- Cable mount, panel mount, right angle, wall mount and surface mount available

## HPC Connectors



HPC (High Power Connectors) for critical connection of professional sound reinforcement systems

- Fully compatible with Neutrik® SpeakON® 4 pole connector series
- Easy to assemble
- Rated up to 50A RMS
- Unique push lock / pull release mechanism

- Straight or right angle
- In-line
- Round or rectangular panel mount

## Audio Adapters



An extensive range of premium quality adapters for audio, video and data

- Rugged, all metal construction
- Built to industry standard specifications
- Non-overmolded options feature easy to customize wiring / grounding schemes for various applications
- Time tested, proven designs

- 1/4"
- XLR
- RCA
- DMX
- BNC
- 75/110 Ohm
- Impedance matching transformers
- 3.5mm (1/8" mini)

## DIRECT BOXES - MIC SPLITTERS - I/O PANELS

## SWITCHES

### Direct Boxes



Converts the outputs of musical instruments, MP3 players, laptops, DJ mixers and other devices to balanced, mic level signals that can be connected to audio consoles, mic preamps and house sound systems

- Phantom Lift enables ground to be lifted remotely using +48V phantom power from the console (900 Series)
- Unique recessed chassis design keeps switches from being accidentally engaged and jacks from being damaged
- Precision engineered circuitry and premium, fully shielded isolation transformer provides unmatched audio performance
- All metal Switchcraft® input/output connections for increased reliability
- 20dB input pad
- XLR ground lift

#### 900 Series Instrument Direct Box with Phantom Lift:

- **Inputs:** 1/4" TS, Thruputs: 1/4" TS, **Outputs:** Balanced XLR

#### 800 Series Instrument Direct Box:

- **Inputs:** 1/4" TS, Thruputs: Two 1/4" TS, **Outputs:** Balanced XLR

#### 700 Series A/V Direct Box

- **Inputs:** 1/8" stereo, dual phono and dual 1/4" TS, Thruputs: Dual phono, **Outputs:** Balanced XLR

### Microphone Splitters



High end splitter systems for use in permanent install, broadcast, live sound and other pro audio applications

- Shielded, dual isolated transformers provide two isolated splits and one direct non isolated split for each input
- Rugged, all metal chassis
- Permanent install version features all I/O and switching on rear panel (RMAS8C/RMAS8CPRO)
- DB25 and terminal block I/O (RMAS8PRO)
- DB25 I/O (RMAS8)
- Line level pad on each input and pin 1 ground lift for each isolated output

- Premium fully shielded transformers (RMAS8 & RMAS8C)
- Also available with super premium fully shielded Jensen transformers ( RMAS8PRO & RMAS8CPRO)

### Pass Through I/O Panels



Pass Through I/O panels are a perfect front end to audio consoles, DAWs, outboard gear or any situation where easy access to rear panel I/O connections is preferred

- All metal Switchcraft® input/output connections preserve the lifespan of I/O connections on expensive pieces of outboard gear and audio consoles
- All I/O panels are conveniently wired to two DB25 connectors (TASCAM DTRS pinout)
- Rugged, all metal chassis
- 110 Ohm compatible, perfect for analog or AES/EBU digital audio
- 16 channels

- XLR Female to DB25
- XLR Male to DB25
- 8 XLR Female / 8 XLR Male to DB25
- 1/4" TRS to DB25
- XLR Male and XLR Female (in groups of 4) to DB25 for AES/EBU digital audio

### Guitar Switches



Professional quality pickup selector switches used by the world's leading guitar manufacturers

- Heavy duty steel frames
- Smooth actuation
- Precious metal welded contacts
- Knobs available in black, white, ivory and amber (Sold separately)

- Available for the most popular guitar styles
- Available in straight (regular and short frame) and right angle

Applications

Features / Benefits

Options

**World Headquarters & Manufacturing Facility**

5555 N. Elston Avenue

Chicago, IL 60630

Phone: 773-792-2700

Fax: 773-792-2129

**International Sales Office**

16, Challenge Enterprise Centre, Sharps Close,

Portsmouth, United Kingdom PO3 5RJ

Phone: +44 (0) 23 9269 1506

Fax: +44 (0) 23 9269 1505

[www.switchcraft.com](http://www.switchcraft.com)



**Switchcraft<sup>®</sup>**

GL2198



Made in USA